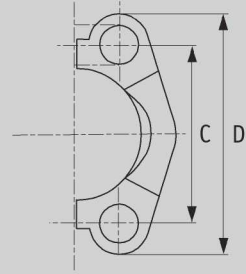


# SFH

## SAE flange clamp

3000 psi,  
material: steel, zincd,  
yellow passivated

Article category 1301



| Designation | DN | size | inch | C | D | bolt metric |
|-------------|----|------|------|---|---|-------------|
|-------------|----|------|------|---|---|-------------|

|         |     |    |       |        |     |         |
|---------|-----|----|-------|--------|-----|---------|
| SFH 13  | 13  | 8  | 1/2"  | 38,1   | 54  | M 8x25  |
| SFH 20  | 20  | 12 | 3/4"  | 47,63  | 65  | M 10x30 |
| SFH 25  | 25  | 16 | 1"    | 52,37  | 70  | M 10x30 |
| SFH 32  | 32  | 20 | 1"1/4 | 58,72  | 79  | M 10x35 |
| SFH 40  | 40  | 24 | 1"1/2 | 69,85  | 94  | M 12x35 |
| SFH 50  | 50  | 32 | 2"    | 77,77  | 102 | M 12x35 |
| SFH 60  | 60  | 40 | 2"1/2 | 88,9   | 114 | M 12x35 |
| SFH 75  | 75  | 48 | 3"    | 106,38 | 135 | M 16x45 |
| SFH 100 | 100 | 64 | 4"    | 130,18 | 162 | M 16x50 |

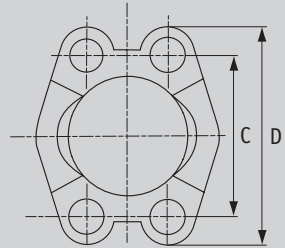


## SFH 4 L

### Flange clamp

4-hole SAE flange, 3000 psi,  
material: steel, zincd,  
yellow passivated

Article category 1304



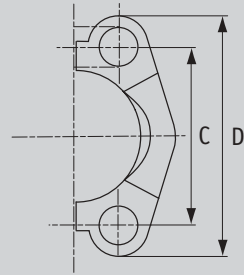
| <i>Designation</i> | <i>DN</i> | <i>size</i> | <i>inch</i> | <i>C</i> | <i>D</i> | <i>bolt metric</i> |
|--------------------|-----------|-------------|-------------|----------|----------|--------------------|
| SFH 13 4 L         | 13        | 8           | 1/2"        | 38,1     | 54       | M 8x25             |
| SFH 20 4 L         | 20        | 12          | 3/4"        | 47,63    | 65       | M 10x30            |
| SFH 25 4 L         | 25        | 16          | 1"          | 52,37    | 70       | M 10x35            |
| SFH 32 4 L         | 32        | 20          | 1"1/4       | 58,72    | 79       | M 10x35            |
| SFH 40 4 L         | 40        | 24          | 1"1/2       | 69,85    | 94       | M 12x35            |
| SFH 50 4 L         | 50        | 32          | 2"          | 77,77    | 102      | M 12x35            |
| SFH 60 4 L         | 60        | 40          | 2"1/2       | 88,9     | 114      | M 12x35            |
| SFH 75 4 L         | 75        | 48          | 3"          | 106,38   | 135      | M 16x50            |
| SFH 100 4 L        | 100       | 64          | 4"          | 130,18   | 162      | M 16x50            |

## SFH 6

### Flange clamp

SAE flange half, 6000 psi,  
material: steel, zincd,  
yellow passivated

Article category 1305



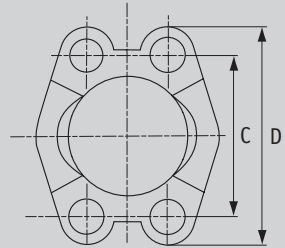
| <i>Designation</i> | <i>DN</i> | <i>size</i> | <i>inch</i> | <i>C</i> | <i>D</i> | <i>bolt metric</i> |
|--------------------|-----------|-------------|-------------|----------|----------|--------------------|
| SFH 6 13           | 13        | 8           | 1/2"        | 40,49    | 56       | M 8x30             |
| SFH 6 20           | 20        | 12          | 3/4"        | 50,80    | 71       | M 10x35            |
| SFH 6 25           | 25        | 16          | 1"          | 57,17    | 81       | M 12x45            |
| SFH 6 32           | 32        | 20          | 1"1/4       | 66,68    | 95       | M 14x50            |
| SFH 6 40           | 40        | 24          | 1"1/2       | 79,38    | 113      | M 16x55            |
| SFH 6 50           | 50        | 32          | 2"          | 96,82    | 133      | M 20x65            |

## SFH 6 4 L

### Flange clamp

4-hole SAE flange mounting,  
6000 psi, material: steel, zincd,  
yellow passivated

Article category 1306



| <i>Designation</i> | <i>DN</i> | <i>size</i> | <i>inch</i> | <i>C</i> | <i>D</i> | <i>bolt metric</i> |
|--------------------|-----------|-------------|-------------|----------|----------|--------------------|
| SFH 6 13 4 L       | 13        | 8           | 1/2"        | 40,49    | 56       | M 8x30             |
| SFH 6 20 4 L       | 20        | 12          | 3/4"        | 50,8     | 71       | M 10x35            |
| SFH 6 25 4 L       | 25        | 16          | 1"          | 57,15    | 81       | M 12x45            |
| SFH 6 32 4 L       | 32        | 20          | 1"1/4       | 66,68    | 95       | M 14x50            |
| SFH 6 40 4 L       | 40        | 24          | 1"1/2       | 79,38    | 113      | M 16x55            |
| SFH 6 50 4 L       | 50        | 32          | 2"          | 96,82    | 133      | M 20x65            |

# SF ORING

## Sealing for SAE flange

ring with square profile for flange  
clamp, 3000 + 6000 psi

Article category 1307



| <i>Designation</i> | <i>DN</i> | <i>size</i> | <i>inch</i> | <i>d1 ring</i> | <i>W ring</i> |
|--------------------|-----------|-------------|-------------|----------------|---------------|
| SF ORING 13        | 12        | 8           | 1/2"        | 18,66          | 3,53          |
| SF ORING 20        | 20        | 12          | 3/4"        | 24,99          | 3,53          |
| SF ORING 25        | 25        | 16          | 1"          | 32,92          | 3,53          |
| SF ORING 32        | 32        | 20          | 1"1/4       | 37,69          | 3,53          |
| SF ORING 40        | 40        | 24          | 1"1/2       | 47,22          | 3,53          |
| SF ORING 50        | 50        | 32          | 2"          | 56,74          | 3,53          |

# SF ORING PU

## Sealing ring for SAE flange

O-ring for flange clamp, 3000 +  
6000 psi, polyurethane

Article category 1307



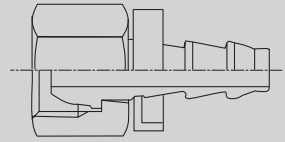
| <i>Designation</i> | <i>DN</i> | <i>size</i> | <i>inch</i> | <i>∅ d1</i> | <i>∅ W</i> |
|--------------------|-----------|-------------|-------------|-------------|------------|
| SF ORING 13 PU     | 12        | 8           | 1/2"        | 18,66       | 3,53       |
| SF ORING 20 PU     | 20        | 12          | 3/4"        | 24,99       | 3,53       |
| SF ORING 25 PU     | 25        | 16          | 1"          | 32,82       | 3,53       |
| SF ORING 32 PU     | 32        | 20          | 1"1/4       | 37,69       | 3,53       |
| SF ORING 40 PU     | 40        | 24          | 1"1/2       | 47,22       | 3,53       |
| SF ORING 50 PU     | 50        | 32          | 2"          | 56,74       | 3,53       |

# ND AFL

## Plug-in nipple

Reusable plug-in fittings for ND hose, 24° cone, multiseal, light series (DKL), material: steel, zined, yellow passivated

Article category 1501



*Designation*

*DN*

*size*

*inch*

*thread*

*for tube-Ø*

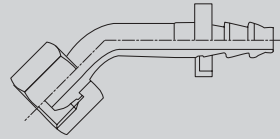
|              |    |    |      |          |    |
|--------------|----|----|------|----------|----|
| ND 06 AFL 04 | 6  | 4  | 1/4" | M 12x1,5 | 6  |
| ND 06 AFL    | 6  | 4  | 1/4" | M 14x1,5 | 8  |
| ND 10 AFL    | 10 | 6  | 3/8" | M 18x1,5 | 12 |
| ND 10 AFL 08 | 10 | 6  | 3/8" | M 16x1,5 | 10 |
| ND 13 AFL    | 13 | 8  | 1/2" | M 22x1,5 | 15 |
| ND 16 AFL    | 16 | 10 | 5/8" | M 26x1,5 | 18 |
| ND 20 AFL    | 20 | 12 | 3/4" | M 30x2   | 22 |

## ND AFL 45

### Plug-in nipple 45°

Reusable plug-in fittings 45° for ND hose, 24° cone, multiseal, light series (DKL), material: steel, zincd, yellow passivated

Article category 1501



*Designation*

*DN*

*size*

*inch*

*thread*

|                 |    |    |      |          |
|-----------------|----|----|------|----------|
| ND 06 AFL 04 45 | 6  | 4  | 1/4" | M 12x1,5 |
| ND 06 AFL 45    | 6  | 4  | 1/4" | M 14x1,5 |
| ND 10 AFL 08 45 | 10 | 6  | 3/8" | M 16x1,5 |
| ND 10 AFL 45    | 10 | 6  | 3/8" | M 18x1,5 |
| ND 13 AFL 45    | 13 | 8  | 1/2" | M 22x1,5 |
| ND 16 AFL 45    | 16 | 10 | 5/8" | M 26x1,5 |
| ND 20 AFL 45    | 20 | 12 | 3/4" | M 30x2   |

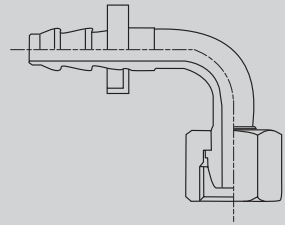


## ND AFL 90

### Plug-in nipple 90°

Reusable plug-in fittings 90° for ND hose, 24° cone, multiseal, light series (DKL), material: steel, zincd, yellow passivated

Article category 1501



*Designation*

*DN*

*size*

*inch*

*thread*

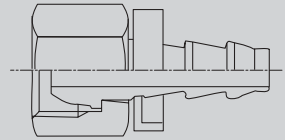
|                 |    |    |      |          |
|-----------------|----|----|------|----------|
| ND 06 AFL 04 90 | 6  | 4  | 1/4" | M 12x1,5 |
| ND 06 AFL 90    | 6  | 4  | 1/4" | M 14x1,5 |
| ND 10 AFL 08 90 | 10 | 6  | 3/8" | M 16x1,5 |
| ND 10 AFL 90    | 10 | 6  | 3/8" | M 18x1,5 |
| ND 13 AFL 90    | 13 | 8  | 1/2" | M 22x1,5 |
| ND 16 AFL 90    | 16 | 10 | 5/8" | M 26x1,5 |
| ND 20 AFL 90    | 20 | 12 | 3/4" | M 30x2   |

# ND A

## Plug-in nipple

Reusable plug-in fittings for ND hose, metric seal, metric union nut, 60° cone, light series (DKM), material: steel, zincd, yellow passivated

Article category 1502



*Designation*

*DN*

*size*

*inch*

*thread*

ND 20 A

20

12

3/4"

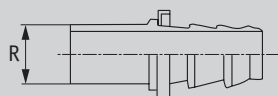
M 30x1,5

## ND FL

### Plug-in nipple with standpipe

Reusable plug-in fittings for ND hose, standpipe, cutting ring connection, light series (BEL), material: steel, zincd, yellow passivated

Article category 1516



*Designation*

*DN*

*size*

*inch*

*tube-Ø (R)*

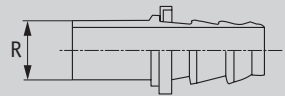
|             |    |    |      |    |
|-------------|----|----|------|----|
| ND 06 FL    | 6  | 4  | 1/4" | 8  |
| ND 06 FL 04 | 6  | 4  | 1/4" | 6  |
| ND 10 FL    | 10 | 6  | 3/8" | 12 |
| ND 10 FL 08 | 10 | 6  | 3/8" | 10 |
| ND 13 FL    | 12 | 8  | 1/2" | 15 |
| ND 16 FL    | 16 | 10 | 5/8" | 18 |
| ND 20 FL    | 20 | 12 | 3/4" | 22 |

## ND FS

### Plug-in nipple with standpipe

Reusable plug-in fittings for ND hose, standpipe, heavy series (BES), cutting ring connection, material: steel, zincd, yellow passivated

Article category 1525



*Designation*

*DN*

*size*

*inch*

*tube-Ø (R)*

ND 06 FS

6

4

1/4"

10

ND 10 FS

10

6

3/8"

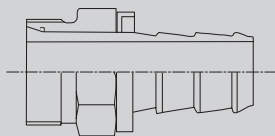
14

# ND HL

## Plug-in nipple

Reusable plug-in fittings for ND hose, male metric thread, light series (CEL), 24° cone, material: steel, zincd, yellow passivated

Article category 1529



*Designation*

*DN*

*size*

*inch*

*thread*

*for tube-Ø*

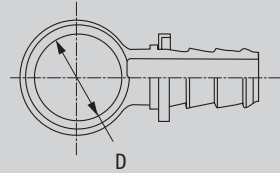
|             |    |    |      |          |    |
|-------------|----|----|------|----------|----|
| ND 06 HL    | 6  | 4  | 1/4" | M 14x1,5 | 8  |
| ND 06 HL 04 | 6  | 4  | 1/4" | M 12x1,5 | 6  |
| ND 10 HL    | 10 | 6  | 3/8" | M 18x1,5 | 12 |
| ND 10 HL 08 | 10 | 6  | 3/8" | M 16x1,5 | 10 |
| ND 13 HL    | 12 | 8  | 1/2" | M 22x1,5 | 15 |
| ND 16 HL    | 16 | 10 | 3/8" | M 26x1,5 | 18 |
| ND 20 HL    | 19 | 12 | 3/4" | M 30x2   | 22 |

## ND B

### Plug-in nipple with banjo

Reusable plug-in fittings for ND hose for banjo bolt, metric, material: steel, zincd, yellow passivated

Article category 1532



*Designation*

*DN*

*size*

*inch*

*Ø D*

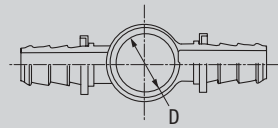
|            |    |    |      |    |
|------------|----|----|------|----|
| ND 06 B    | 6  | 4  | 1/4" | 12 |
| ND 06 B 02 | 6  | 4  | 1/4" | 8  |
| ND 06 B 04 | 6  | 4  | 1/4" | 10 |
| ND 06 B 08 | 6  | 4  | 1/4" | 14 |
| ND 10 B    | 10 | 6  | 3/8" | 16 |
| ND 10 B 06 | 10 | 6  | 3/8" | 12 |
| ND 10 B 08 | 10 | 6  | 3/8" | 14 |
| ND 13 B    | 12 | 8  | 1/2" | 18 |
| ND 16 B    | 16 | 10 | 5/8" | 22 |
| ND 20 B    | 20 | 12 | 3/4" | 26 |

## ND BD

### Plug-in nipple as banjo

Reusable plug-in fittings for ND hose, double connector for banjo bolt, metric, material: steel, zined, yellow passivated

Article category 1532



*Designation*

*DN*

*size*

*inch*

*Ø D*

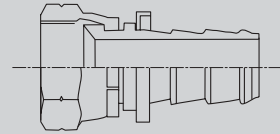
|             |    |   |      |    |
|-------------|----|---|------|----|
| ND 06 BD    | 6  | 4 | 1/4" | 12 |
| ND 06 BD 02 | 6  | 4 | 1/4" | 8  |
| ND 06 BD 04 | 6  | 4 | 1/4" | 10 |
| ND 10 BD    | 10 | 6 | 3/8" | 16 |
| ND 10 BD 08 | 10 | 6 | 3/8" | 14 |

# ND AJ

## Plug-in nipple

Reusable plug-in fittings for ND hose with union nut, UNF thread, JIC sealing head with 74° cone seat for JIC stud (DKJ), material: steel, zincd, yellow passivated

Article category 1533



*Designation*

*DN*

*size*

*inch*

*UNF thread*

|             |    |    |      |           |
|-------------|----|----|------|-----------|
| ND 06 AJ    | 6  | 4  | 1/4" | 7/16"-20  |
| ND 06 AJ 08 | 6  | 4  | 1/4" | 1/2"-20   |
| ND 10 AJ    | 10 | 6  | 3/8" | 9/16"-18  |
| ND 13 AJ    | 13 | 8  | 1/2" | 3/4"-16   |
| ND 16 AJ    | 16 | 10 | 5/8" | 7/8"-14   |
| ND 20 AJ    | 20 | 12 | 3/4" | 1"1/16-12 |

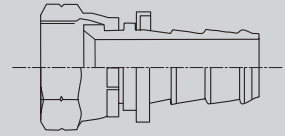


# ND ASA

## Plug-in nipple

Reusable plug-in fittings for ND hose with union nut, UNF thread, SAE sealing head with 45° cone seat, material: steel, zincd, yellow passivated

Article category 1534



*Designation*

*DN*

*size*

*inch*

*UNF thread*

ND 10 ASA

10

6

3/8"

5/8"-18

ND 20 ASA

20

12

3/4"

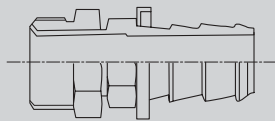
1"1/16-14

## ND HN

### Plug-in nipple

Reusable plug-in fittings for ND hose, male NPT thread, conical (AGN), material: steel, zined, yellow passivated

Article category 1535



*Designation*

*DN*

*size*

*inch*

*NPTF thread*

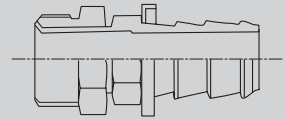
|             |    |    |      |         |
|-------------|----|----|------|---------|
| ND 06 HN    | 6  | 4  | 1/4" | 1/4"-18 |
| ND 06 HN 02 | 6  | 4  | 1/4" | 1/8"-27 |
| ND 10 HN    | 10 | 6  | 3/8" | 3/8"-18 |
| ND 10 HN 06 | 10 | 6  | 3/8" | 1/4"-18 |
| ND 13 HN    | 12 | 8  | 1/2" | 1/2"-14 |
| ND 13 HN 10 | 12 | 8  | 1/2" | 3/8"-18 |
| ND 16 HN 13 | 16 | 10 | 5/8" | 1/2"-14 |
| ND 20 HN    | 20 | 12 | 3/4" | 3/4"-14 |

# ND HSD

## Plug-in nipple

Reusable plug-in fittings for ND hose, male SAE inverted flare swivel, 45° cone seat, material: steel, zinc plated, yellow passivated

Article category 1536



*Designation*

*DN*

*size*

*inch*

*thread*

ND 06 HSD

5

3

3/16"

7/16"-24

ND 06 HSD 08

8

5

5/16"

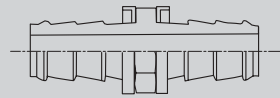
1/2"-20

## ND VB

### Plug-in nipple (double connector)

Reusable plug-in fittings for ND hose, hose connection for ND 100 or ND 300, material: steel, zined, yellow passivated

Article category 1537



*Designation*

*DN*

*size*

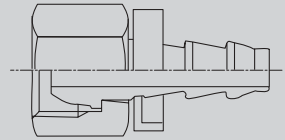
*inch*

|          |    |    |      |
|----------|----|----|------|
| ND 06 VB | 6  | 4  | 1/4" |
| ND 10 VB | 10 | 6  | 3/8" |
| ND 13 VB | 12 | 8  | 1/2" |
| ND 16 VB | 16 | 10 | 5/8" |
| ND 20 VB | 19 | 12 | 3/4" |

# ND AB

## Plug-in nipple

Reusable plug-in fittings for ND hose, union nut BSP with 60° cone (DKR), material: steel, zined, yellow passivated  
Article category 1538



*Designation*

*DN*

*size*

*inch*

*BSP-thread*

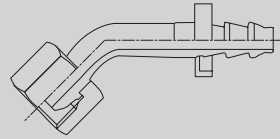
|          |    |    |      |           |
|----------|----|----|------|-----------|
| ND 06 AB | 6  | 4  | 1/4" | G 1/4"-19 |
| ND 10 AB | 10 | 6  | 3/8" | G 3/8"-19 |
| ND 13 AB | 13 | 8  | 1/2" | G 1/2"-14 |
| ND 16 AB | 16 | 10 | 5/8" | G 5/8"-14 |
| ND 20 AB | 20 | 12 | 3/4" | G 3/4"-14 |

## ND AB 45

### Plug-in nipple 45°

Reusable plug-in fittings 45°  
for ND hose, BSP union nut,  
60° cone (DKR), material: steel,  
zincd, yellow passivated

Article category 1538



*Designation*

*DN*

*size*

*inch*

*BSP-thread*

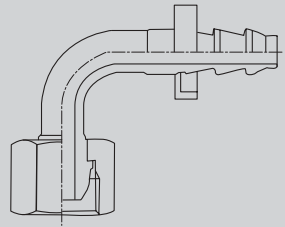
|             |    |    |      |           |
|-------------|----|----|------|-----------|
| ND 06 AB 45 | 6  | 4  | 1/4" | G 1/4"-19 |
| ND 10 AB 45 | 10 | 6  | 3/8" | G 3/8"-19 |
| ND 13 AB 45 | 13 | 8  | 1/2" | G 1/2"-14 |
| ND 16 AB 45 | 16 | 10 | 5/8" | G 5/8"-14 |
| ND 20 AB 45 | 20 | 12 | 3/4" | G 3/4"-14 |

## ND AB 90

### Plug-in nipple 90°

Reusable plug-in fittings 90°  
for ND hose, BSP union nut,  
60° cone (DKR), material: steel,  
zincd, yellow passivated

Article category 1538



*Designation*

*DN*

*size*

*inch*

*BSP-thread*

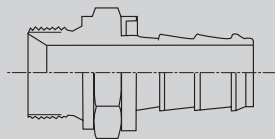
|             |    |    |      |           |
|-------------|----|----|------|-----------|
| ND 06 AB 90 | 6  | 4  | 1/4" | G 1/4"-19 |
| ND 10 AB 90 | 10 | 6  | 3/8" | G 3/8"-19 |
| ND 13 AB 90 | 13 | 8  | 1/2" | G 1/2"-14 |
| ND 16 AB 90 | 16 | 10 | 5/8" | G 5/8"-14 |
| ND 20 AB 90 | 20 | 12 | 3/4" | G 3/4"-14 |

## ND HB

### Plug-in nipple

Reusable plug-in fittings for ND hose, male BSP thread with 60° cone seat (AGR), material: steel, zined, yellow passivated

Article category 1540



*Designation*

*DN*

*size*

*inch*

*BSP-thread*

|             |    |    |      |           |
|-------------|----|----|------|-----------|
| ND 06 HB    | 6  | 4  | 1/4" | G 1/4"-19 |
| ND 06 HB 02 | 6  | 4  | 1/4" | G 1/8"-28 |
| ND 10 HB    | 10 | 6  | 3/8" | G 3/8"-19 |
| ND 10 HB 06 | 10 | 6  | 3/8" | G 1/4"-19 |
| ND 13 HB    | 12 | 8  | 1/2" | G 1/2"-14 |
| ND 16 HB    | 16 | 10 | 5/8" | G 5/8"-14 |
| ND 16 HB 13 | 16 | 10 | 5/8" | G 1/2"-14 |
| ND 20 HB    | 20 | 12 | 3/4" | G 3/4"-14 |



# SFT

## Soldering flange

SAE weld-on flange, 3000 psi

Article category 1601



| <i>Designation</i> | <i>DN</i> | <i>size</i> | <i>flange size (inch)</i> | <i>A1</i> | <i>H</i> |
|--------------------|-----------|-------------|---------------------------|-----------|----------|
| SFT 13             | 13        | 8           | 1/2"                      | 30,2      | 6,7      |
| SFT 20             | 20        | 12          | 3/4"                      | 38,1      | 6,7      |
| SFT 25             | 25        | 16          | 1"                        | 44,4      | 8,0      |
| SFT 32             | 32        | 20          | 1"1/4                     | 50,8      | 8,0      |
| SFT 40             | 40        | 24          | 1"1/2                     | 60,3      | 8,0      |
| SFT 50             | 50        | 32          | 2"                        | 71,4      | 9,5      |
| SFT 60             | 60        | 40          | 2"1/2                     | 84,1      | 9,5      |

## SFT ES

### Soldering head with SAE flange head

SAE soldering flange, companion  
flange without O-ring groove

Article category 1601



*Designation*

*DN*

*size*

*flange size (inch)*

SFT 20 ES

20

12

3/4"

SFT 25 ES

25

16

1"

## SFT 6

### Soldering head with SAE flange head

SAE soldering flange, 6000 psi

Article category 1601



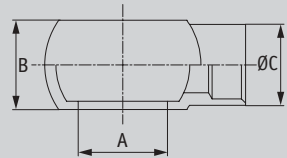
| <i>Designation</i> | <i>DN</i> | <i>size</i> | <i>flange size (inch)</i> | <i>A1</i> | <i>H</i> |
|--------------------|-----------|-------------|---------------------------|-----------|----------|
| SFT 6 13           | 13        | 8           | 1/2"                      | 31,7      | 7,7      |
| SFT 6 20           | 20        | 12          | 3/4"                      | 41,3      | 8,8      |
| SFT 6 25           | 25        | 16          | 1"                        | 47,6      | 9,5      |
| SFT 6 32           | 32        | 20          | 1"1/4                     | 54        | 10,3     |
| SFT 6 40           | 40        | 24          | 1"1/2                     | 63,5      | 12,6     |
| SFT 6 50           | 50        | 32          | 2"                        | 79,4      | 12,6     |

# LOET B

## Soldering head

Soldering head for banjo bolt

Article category 1606



### Designation

C

A

B

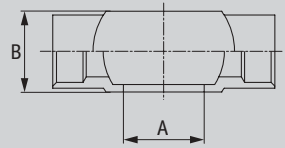
|               |    |       |       |
|---------------|----|-------|-------|
| LOET 02 B 05  | 5  | M 8   | 8     |
| LOET 04 B 06  | 6  | M 10  | 10    |
| LOET 06 B 08  | 8  | M 12  | 12    |
| LOET 06 B 10  | 8  | M 12  | 12    |
| LOET 08 B 06  | 6  | M 14  | 14    |
| LOET 08 B 08  | 8  | M 14  | 14    |
| LOET 08 B 10  | 10 | M 14  | 14    |
| LOET 1/2 B 18 | 18 | R 1/2 | 20    |
| LOET 10 B 10  | 10 | M 16  | 16-18 |
| LOET 10 B 12  | 12 | M 16  | 16    |
| LOET 13 B 10  | 10 | M 18  | 18    |
| LOET 13 B 12  | 12 | M 18  | 20    |
| LOET 13 B 15  | 15 | M 18  | 20    |
| LOET 16 B 18  | 18 | M 22  | 22-25 |
| LOET 20 B 22  | 22 | M 26  | 29-30 |
| LOET 25 B 28  | 28 | M 30  | 36    |
| LOET 3/8 B 12 | 22 | M 26  | 29-30 |

# LOET BD

## Soldering nipple

Soldering nipple for banjo bolt

Article category 1606



*Designation*

*C*

*tube-Ø*

*screw bore*

|               |    |    |    |
|---------------|----|----|----|
| LOET 02 BD 05 | 5  | 8  | 8  |
| LOET 04 BD 06 | 6  | 10 | 10 |
| LOET 06 BD 08 | 8  | 12 | 12 |
| LOET 08 BD 10 | 10 | 14 | 14 |
| LOET 10 BD 12 | 12 | 16 | 16 |

# LOET H

## Soldering nipple

Weld-on nipple with male metric thread

Article category 1606

| <i>Designation</i> | <i>DN</i> | <i>size</i> | <i>inch</i> | <i>tube-Ø</i> | <i>thread</i> |
|--------------------|-----------|-------------|-------------|---------------|---------------|
|--------------------|-----------|-------------|-------------|---------------|---------------|

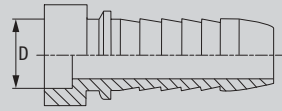
|              |    |   |      |    |          |
|--------------|----|---|------|----|----------|
| LOET 06 H 08 | 6  | 4 | 1/4" | 8  | M 14x1,5 |
| LOET 13 H 15 | 12 | 8 | 1/2" | 15 | M 22x1,5 |

# PN LOET

## Soldering nipple

Weld-on swage nipple

Article category 1606



*Designation*

*DN*

*size*

*inch*

*tube-Ø D*

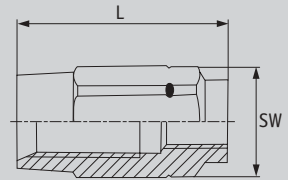
|               |    |    |       |    |
|---------------|----|----|-------|----|
| PN 06 LOET 06 | 6  | 4  | 1/4"  | 6  |
| PN 06 LOET 08 | 6  | 4  | 1/4"  | 8  |
| PN 06 LOET 10 | 6  | 4  | 1/4"  | 10 |
| PN 08 LOET 10 | 8  | 5  | 5/16" | 10 |
| PN 08 LOET 12 | 8  | 5  | 5/16" | 12 |
| PN 10 LOET 10 | 10 | 6  | 3/8"  | 10 |
| PN 10 LOET 12 | 10 | 6  | 3/8"  | 12 |
| PN 13 LOET 15 | 12 | 8  | 1/2"  | 15 |
| PN 13 LOET 16 | 12 | 8  | 1/2"  | 16 |
| PN 16 LOET 18 | 16 | 10 | 5/8"  | 18 |
| PN 20 LOET 20 | 20 | 12 | 3/4"  | 20 |
| PN 20 LOET 22 | 20 | 12 | 3/4"  | 22 |
| PN 25 LOET 28 | 25 | 16 | 1"    | 28 |
| PN 32 LOET 35 | 32 | 20 | 1"1/4 | 35 |
| PN 40 LOET 42 | 40 | 24 | 1"1/2 | 42 |

# AFH 100

## Ferrule for high pressure applications

Reusable threaded ferrule for hoses of high pressure application ranges, for TAF 100 hose

Article category 1701



| <i>Designation</i> | <i>DN</i> | <i>size</i> | <i>inch</i> | <i>L</i> | <i>SW</i> |
|--------------------|-----------|-------------|-------------|----------|-----------|
| AFH 104            | 04        | 03          | 3/16"       | 25       | 12        |
| AFH 106            | 06        | 04          | 1/4"        | 36       | 17        |
| AFH 108            | 08        | 05          | 5/16"       | 38       | 19        |
| AFH 110            | 10        | 06          | 3/8"        | 44,5     | 22        |
| AFH 113            | 12        | 08          | 1/2"        | 51       | 27        |

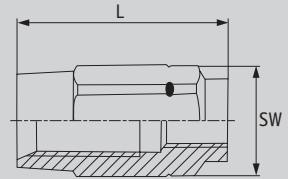


## BFH 200

Threaded ferrule for high pressure application ranges for TBF 200 hose

material: steel, zinced, yellow passivated

Article category 1701



*Designation*

*DN*

*size*

*inch*

*L*

*SW*

|         |    |    |       |      |    |
|---------|----|----|-------|------|----|
| BFH 204 | 04 | 03 | 3/16" | 25   | 12 |
| BFH 206 | 06 | 04 | 1/4"  | 36   | 17 |
| BFH 208 | 08 | 05 | 5/16" | 38   | 19 |
| BFH 210 | 10 | 06 | 3/8"  | 44,5 | 22 |
| BFH 213 | 12 | 08 | 1/2"  | 51   | 27 |
| BFH 220 | 20 | 12 | 3/4"  | 57   | 30 |

## TRN FL

### Threaded nipple with standpipe

Threaded connection for TAF and TBF, hose with standpipe, light series (BEL), material: steel, zined, yellow passivated

Article category 1702



*Designation*

*DN*

*tube-Ø*

|               |    |    |
|---------------|----|----|
| TR N 04 FL    | 4  | 6  |
| TR N 06 FL    | 6  | 8  |
| TR N 08 FL    | 8  | 10 |
| TR N 10 FL    | 10 | 12 |
| TR N 10 FL 13 | 10 | 15 |
| TR N 13 FL    | 12 | 15 |
| TR N 13 FL 16 | 12 | 18 |
| TR N 20 FL    | 20 | 22 |

## TRN FS

### Threaded nipple with standpipe

Threaded connection for TAF and TBF, hose with standpipe, heavy series (BES), material: steel, zincd, yellow passivated

Article category 1702



*Designation*

*DN*

*tube-Ø*

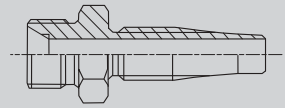
|               |    |    |
|---------------|----|----|
| TR N 04 FS    | 4  | 8  |
| TR N 06 FS    | 6  | 10 |
| TR N 06 FS 04 | 6  | 8  |
| TR N 06 FS 08 | 6  | 12 |
| TR N 08 FS    | 8  | 12 |
| TR N 10 FS    | 10 | 14 |
| TR N 13 FS    | 13 | 16 |
| TR N 20 FS    | 20 | 25 |

# TRN HL

## Threaded nipple

Threaded connection for TAF and TBF, metric BSP thread, light series (CEL), 24° cone seat, material: steel, zincd, yellow passivated

Article category 1703



*Designation*

*DN*

*thread*

*tube-Ø*

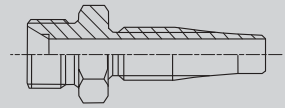
|               |    |          |    |
|---------------|----|----------|----|
| TR N 04 HL    | 4  | M 12x1,5 | 6  |
| TR N 06 HL    | 6  | M 14x1,5 | 8  |
| TR N 08 HL    | 8  | M 16x1,5 | 10 |
| TR N 08 HL 10 | 8  | M 18x1,5 | 12 |
| TR N 10 HL    | 10 | M 18x1,5 | 12 |
| TR N 20 HL    | 20 | M 30x2   | 22 |

# TRN HS

## Threaded nipple

Threaded connection for TAF and TBF, hose metric BSP thread. heavy series (CES), 24° cone seat, material: steel, zincd, yellow passivated

Article category 1703



*Designation*

*DN*

*thread*

*tube-Ø*

TR N 04 HS 03

4

M 14x1,5

6

TR N 06 HS

6

M 18x1,5

10

TR N 08 HS

8

M 20x1,5

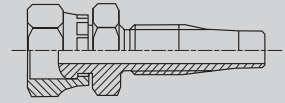
12

# TRN A

## Threaded nipple

Threaded connection for TAF and TBF, with 60° cone and union metric union nut, with metric UEM (DKM), material: steel, zincd, yellow passivated

Article category 1704



*Designation*

*DN*

*thread*

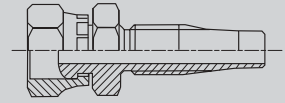
|              |    |          |
|--------------|----|----------|
| TR N 04 A    | 4  | M 12x1,5 |
| TR N 06 A    | 6  | M 14x1,5 |
| TR N 06 A 08 | 6  | M 16x1,5 |
| TR N 08 A    | 8  | M 16x1,5 |
| TR N 08 A 10 | 8  | M 18x1,5 |
| TR N 10 A    | 10 | M 18x1,5 |
| TR N 10 A 13 | 10 | M 22x1,5 |

# TRN AB

## Threaded nipple

Threaded connection for TAF and TBF, union BSP nut, 60° cone (DKR), material: steel, zincd, yellow passivated

Article category 1705



*Designation*

*DN*

*thread*

TR N 04 AB 06

4

R 1/4"

TR N 06 AB

6

R 1/4"

TR N 10 AB

10

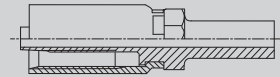
R 3/8"

## TRP FL

### Swage nipple with standpipe

Swage nipple for TAF as well as TBF hose, tandpipe, light series (BEL), material: steel, zincd, yellow passivated

Article category 1706



*Designation*

*DN*

*tube-Ø*

|               |    |    |
|---------------|----|----|
| TR P 04 FL    | 4  | 6  |
| TR P 10 FL 13 | 10 | 15 |
| TR P 13 FL    | 13 | 15 |
| TR P 13 FL 16 | 13 | 18 |

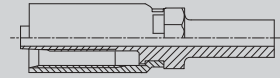


## TRP FS

### Swage nipple with standpipe

Swage nipple for TAF as well as TBF hose, standpipe heavy series (BES), material: steel, zincd, yellow passivated

Article category 1706



*Designation*

*DN*

*tube-Ø*

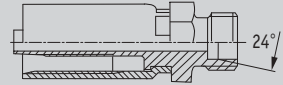
|               |    |    |
|---------------|----|----|
| TR P 04 FS    | 4  | 8  |
| TR P 06 FS    | 6  | 10 |
| TR P 06 FS 04 | 6  | 8  |
| TR P 06 FS 08 | 6  | 12 |
| TR P 08 FS    | 8  | 12 |
| TR P 08 FS 06 | 8  | 10 |
| TR P 08 FS 10 | 8  | 14 |
| TR P 10 FS    | 10 | 14 |
| TR P 10 FS 06 | 10 | 10 |
| TR P 10 FS 08 | 10 | 12 |
| TR P 13 FS    | 12 | 16 |
| TR P 13 FS 16 | 12 | 20 |

# TRP HL

## Swage nipple

Swage nipple for TAF as well as TBF hose, male metric thread, light series, 24° cone seat (CEL), material: steel, zincd, yellow passivated

Article category 1707



*Designation*

*DN*

*thread*

*tube-Ø*

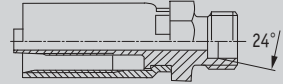
|               |    |        |    |
|---------------|----|--------|----|
| TR P 04 HL    | 4  | 12x1,5 | 6  |
| TR P 06 HL    | 6  | 14x1,5 | 8  |
| TR P 08 HL    | 8  | 16x1,5 | 10 |
| TR P 08 HL 10 | 8  | 18x1,5 | 12 |
| TR P 10 HL    | 10 | 18x1,5 | 12 |
| TR P 10 HL 13 | 10 | 22x1,5 | 15 |
| TR P 13 HL    | 12 | 22x1,5 | 15 |

# TRP HS

## Swage nipple

Swage nipple for TAF as well as TBF hose, male metric thread, 24° cone seat, heavy series (CES), material: steel, zincd, yellow passivated

Article category 1707



*Designation*

*DN*

*thread*

*tube-Ø*

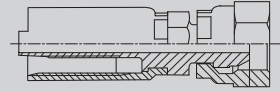
|               |    |        |    |
|---------------|----|--------|----|
| TR P 04 HS    | 4  | 16x1,5 | 8  |
| TR P 04 HS 03 | 4  | 14x1,5 | 6  |
| TR P 06 HS    | 6  | 18x1,5 | 10 |
| TR P 06 HS 08 | 6  | 20x1,5 | 12 |
| TR P 08 HS    | 8  | 20x1,5 | 12 |
| TR P 10 HS    | 10 | 22x1,5 | 14 |
| TR P 13 HS    | 12 | 24x1,5 | 16 |

# TRP A

## Swage nipple

Swage nipple for TAF as well as TBF hose, metric union nut, 60° cone (DKM), material: steel, zined, yellow passivated

Article category 1708



*Designation*

*DN*

*thread*

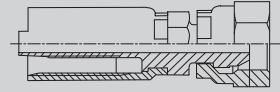
|              |    |        |
|--------------|----|--------|
| TR P 04 A    | 4  | 12x1,5 |
| TR P 04 A 08 | 4  | 16x1,5 |
| TR P 06 A    | 6  | 14x1,5 |
| TR P 06 A 08 | 6  | 16x1,5 |
| TR P 08 A    | 8  | 16x1,5 |
| TR P 10 A    | 10 | 18x1,5 |
| TR P 13 A    | 12 | 22x1,5 |

# TRP AOS

## Swage nipple

Swage nipple for TAF as well as TBF hose, metric union nut, 24° cone, O-ring (DKOS), heavy series, material: steel, zincd, yellow passivated

Article category 1709



*Designation*

*DN*

*thread*

*tube-Ø*

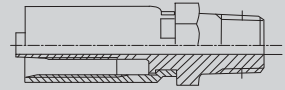
|                |    |          |    |
|----------------|----|----------|----|
| TR P 04 AOS    | 4  | M 16x1,5 | 8  |
| TR P 06 AOS    | 6  | M 18x1,5 | 10 |
| TR P 08 AOS    | 8  | M 20x1,5 | 12 |
| TR P 10 AOS    | 10 | M 22x1,5 | 14 |
| TR P 13 AOS    | 13 | M 24x1,5 | 16 |
| TR P 06 AOS 04 | 6  | M 16x1,5 | 8  |
| TR P 08 AOS 06 | 8  | M 18x1,5 | 10 |
| TR P 10 AOS 08 | 10 | M 20x1,5 | 12 |

# TRP HN

## Swage nipple

Swage nipple for TAF as well as TBF hose, male NPT thread (AGN), material: steel, zincd, yellow passivated

Article category 1710



*Designation*

*DN*

*thread*

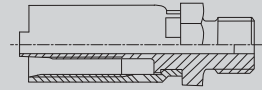
|            |    |             |
|------------|----|-------------|
| TR P 06 HN | 6  | NPT 1/4"-18 |
| TR P 10 HN | 10 | NPT 3/8"-18 |
| TR P 13 HN | 12 | NPT 1/2"-14 |

## TRP HB

### Swage nipple

Swage nipple for TAF and TBF hose, male BSP thread and 60° cone seat (AGR), material: steel, zined, yellow passivated

Article category 1711



*Designation*

*DN*

*thread*

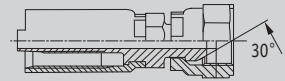
|               |    |        |
|---------------|----|--------|
| TR P 04 HB 02 | 4  | G 1/8" |
| TR P 06 HB    | 6  | G 1/4" |
| TR P 08 HB 10 | 8  | G 3/8" |
| TR P 10 HB    | 10 | G 3/8" |
| TR P 13 HB    | 12 | G 1/2" |

## TRP AB

### Swage nipple

Swage nipple for TAF and TBF hose, union nut with BSP thread, 60° cone (DKR), material: steel, zined, yellow passivated

Article category 1712



*Designation*

*DN*

*thread*

|               |    |        |
|---------------|----|--------|
| TR P 04 AB 02 | 4  | G 1/8" |
| TR P 04 AB 06 | 4  | G 1/4" |
| TR P 06 AB    | 6  | G 1/4" |
| TR P 08 AB 10 | 8  | G 3/8" |
| TR P 13 AB    | 12 | G 1/2" |

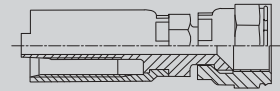


## TRP AJ

### Swage nipple

Swage nipple for TAF and TBF hose, union nut, JIC, 64° cone seat (DKJ), material: steel, zincd, yellow passivated

Article category 1713



*Designation*

*DN*

*size*

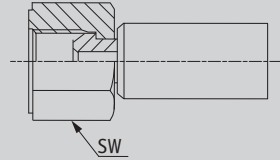
|               |    |              |
|---------------|----|--------------|
| TR P 04 AJ 06 | 4  | UNF 7/16"-20 |
| TR P 06 AJ    | 6  | UNF 7/16"-20 |
| TR P 06 AJ 08 | 6  | UNF 1/2"-20  |
| TR P 06 AJ 10 | 6  | UNF 9/16"-18 |
| TR P 08 AJ    | 8  | UNF 1/2"-20  |
| TR P 08 AJ 10 | 8  | UNF 9/16"-18 |
| TR P 10 AJ    | 10 | UNF 9/16"-18 |

## PAY 300 AB

### Swage fitting for hose type NY 300

BSP seal, conical, union BSP nut, 60° cone seat (DKR), material: steel, zincd, yellow passivated

Article category 1720



*Designation*

*DN*

*size*

*inch*

*thread size*

*SW*

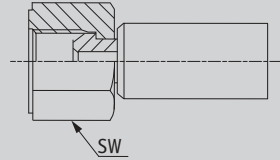
|               |    |    |      |        |    |
|---------------|----|----|------|--------|----|
| PAY 313 AB    | 13 | 8  | 1/2" | G 1/2" | 27 |
| PAY 320 AB    | 20 | 12 | 3/4" | G 3/4" | 32 |
| PAY 320 AB 25 | 20 | 12 | 3/4" | G 1"   | 41 |
| PAY 325 AB    | 25 | 16 | 1"   | G 1"   | 41 |

# PAY 400 AB

## Swage fitting for hose type NY 400

BSP seal, union BSP nut, 60° cone (DKR), material: steel, zinc, yellow passivated

Article category 1720



*Designation*

*DN*

*size*

*inch*

*thread size*

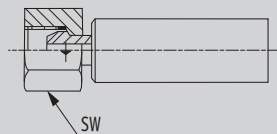
*SW*

|               |    |    |       |          |    |
|---------------|----|----|-------|----------|----|
| PAY 408 AB 10 | 8  | 5  | 5/16" | G 3/8"   | 27 |
| PAY 410 AB 13 | 10 | 6  | 3/8"  | G 1/2"   | 30 |
| PAY 413 AB    | 12 | 8  | 1/2"  | G 1/2"   | 30 |
| PAY 420 AB 25 | 20 | 12 | 3/4"  | G 1"     | 41 |
| PAY 425 AB 32 | 25 | 16 | 1"    | G 1 1/4" | 50 |

## PAY 400 AFL

Swage fitting for hose  
type NY 300

metric female multiseal (DKL),  
light series, material: steel,  
zincd, yellow passivated  
Article category 1720



| <i>Designation</i> | <i>DN</i> | <i>size</i> | <i>inch</i> | <i>thread size</i> | <i>SW</i> |
|--------------------|-----------|-------------|-------------|--------------------|-----------|
|--------------------|-----------|-------------|-------------|--------------------|-----------|

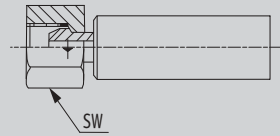
|                |   |   |       |          |    |
|----------------|---|---|-------|----------|----|
| PAY 404 AFL 06 | 5 | 3 | 3/16" | M 14x1,5 | 22 |
| PAY 406 AFL    | 6 | 4 | 1/4"  | M 14x1,5 | 22 |

# PAY 600 AFL

Swage fitting for hose  
type NY 600

metric female multiseal, light  
series (DKL), material: steel,  
zincd, yellow passivated

Article category 1720



*Designation*

*DN*

*size*

*inch*

*thread size*

*SW*

PAY 604 AFL 06

5

3

3/16"

M 14x1,5

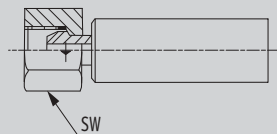
22

# PAY 400 AFS

## Swage fitting for hose type NY 400

metric female multiseal, 24°  
cone, heavy series (DKS),  
material: steel, zincd,  
yellow passivated

Article category 1720



*Designation*

*DN*

*size*

*inch*

*thread size*

*SW*

PAY 408 AFS

8

5

5/16"

M 20x1,5

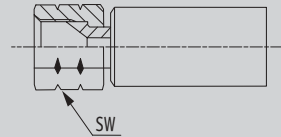
27

## PAY 300 AJ

Swage fitting for hose  
type NY 300

JIC, 74° cone seat (DKJ),  
material: steel, zincd,  
yellow passivated

Article category 1720



*Designation*

*DN*

*size*

*inch*

*thread size*

*SW*

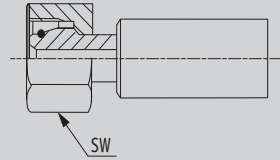
|               |    |    |       |               |    |
|---------------|----|----|-------|---------------|----|
| PAY 306 AJ 08 | 6  | 4  | 1/4"  | UNF 1/2"-20   | 19 |
| PAY 308 AJ 10 | 8  | 5  | 5/16" | UNF 9/16"-18  | 19 |
| PAY 310 AJ    | 10 | 6  | 3/8"  | UNF 9/16"-18  | 22 |
| PAY 310 AJ 13 | 10 | 6  | 3/8"  | UNF 3/4"-16   | 24 |
| PAY 313 AJ 16 | 12 | 8  | 1/2"  | UNF 7/8"-14   | 27 |
| PAY 316 AJ 20 | 16 | 10 | 5/8"  | UNF 1"1/16-12 | 32 |
| PAY 320 AJ    | 20 | 12 | 3/4"  | UNF 1"1/16-12 | 36 |
| PAY 320 AJ 25 | 20 | 12 | 3/4"  | UNF 1"5/16-12 | 41 |
| PAY 325 AJ 32 | 25 | 16 | 1"    | UNF 1"5/8-12  | 50 |

# PAY 300 AOS

## Swage fitting for hose type NY 300

O-ring, metric 24° cone, heavy  
series (DKOS), material: steel,  
zincd, yellow passivated

Article category 1720



| <i>Designation</i> | <i>DN</i> | <i>size</i> | <i>inch</i> | <i>thread size</i> | <i>SW</i> |
|--------------------|-----------|-------------|-------------|--------------------|-----------|
|--------------------|-----------|-------------|-------------|--------------------|-----------|

|             |    |    |       |          |    |
|-------------|----|----|-------|----------|----|
| PAY 306 AOS | 6  | 4  | 1/4"  | M 18x1,5 | 22 |
| PAY 308 AOS | 8  | 5  | 5/16" | M 20x1,5 | 24 |
| PAY 310 AOS | 10 | 6  | 3/8"  | M 22x1,5 | 27 |
| PAY 313 AOS | 13 | 8  | 1/2"  | M 24x1,5 | 30 |
| PAY 316 AOS | 16 | 10 | 5/8"  | M 30x2   | 36 |
| PAY 320 AOS | 20 | 12 | 3/4"  | M 36x2   | 46 |
| PAY 325 AOS | 25 | 16 | 1"    | M 42x2   | 50 |
| PAY 332 AOS | 32 | 20 | 1"1/4 | M 52x2   | 60 |

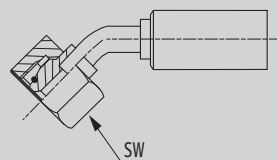


## PAY 300 AOS 45

Swage fitting 45° for hose  
type NY 300

O-ring, metric 24° cone, heavy  
series (DKOS), material: steel,  
zincd, yellow passivated

Article category 1720



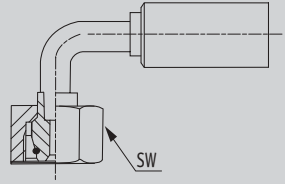
| <i>Designation</i> | <i>DN</i> | <i>size</i> | <i>inch</i> | <i>thread size</i> | <i>SW</i> |
|--------------------|-----------|-------------|-------------|--------------------|-----------|
| PAY 308 AOS 45     | 8         | 5           | 5/16"       | M 20x1,5           | 24        |
| PAY 310 AOS 45     | 10        | 6           | 3/8"        | M 22x1,5           | 27        |
| PAY 316 AOS 45     | 16        | 10          | 5/8"        | M 30x2             | 36        |
| PAY 320 AOS 45     | 20        | 12          | 3/4"        | M 36x2             | 46        |

## PAY 300 AOS 90

Swage fitting 90° for hose  
type NY 300

O-ring, metric 24° cone, heavy  
series (DKOS), material: steel,  
zincd, yellow passivated

Article category 1720



*Designation*

*DN*

*size*

*inch*

*thread size*

*SW*

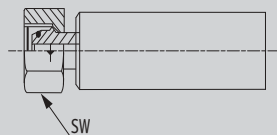
|                |    |    |       |          |    |
|----------------|----|----|-------|----------|----|
| PAY 308 AOS 90 | 8  | 5  | 5/16" | M 18x1,5 | 24 |
| PAY 310 AOS 90 | 10 | 6  | 3/8"  | M 22x1,5 | 27 |
| PAY 313 AOS 90 | 12 | 8  | 1/2"  | M 24x1,5 | 30 |
| PAY 316 AOS 90 | 16 | 10 | 5/8"  | M 30x2   | 36 |

## PAY 400 AOS

### Swage fitting for hose type NY 400

O-ring, metric 24° cone, heavy  
series (DK05), material: steel,  
zincd, yellow passivated

Article category 1720



| <i>Designation</i> | <i>DN</i> | <i>size</i> | <i>inch</i> | <i>thread size</i> | <i>SW</i> |
|--------------------|-----------|-------------|-------------|--------------------|-----------|
|--------------------|-----------|-------------|-------------|--------------------|-----------|

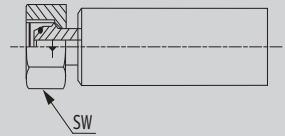
|             |    |    |      |          |    |
|-------------|----|----|------|----------|----|
| PAY 410 AOS | 10 | 6  | 3/8" | M 22x1,5 | 30 |
| PAY 413 AOS | 12 | 8  | 1/2" | M 24x1,5 | 32 |
| PAY 420 AOS | 20 | 12 | 3/4" | M 36x2   | 46 |

# PAY 600 AOS

## Swage fitting for hose type NY 600

O-ring, metric 24° cone, heavy  
series (DK05), material: steel,  
zincd, yellow passivated

Article category 1720



*Designation*

*DN*

*size*

*inch*

*thread size*

*SW*

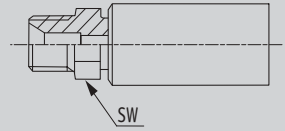
|             |    |    |       |          |    |
|-------------|----|----|-------|----------|----|
| PAY 608 AOS | 8  | 5  | 5/16" | M 20x1,5 | 27 |
| PAY 613 AOS | 12 | 8  | 1/2"  | M 24x1,5 | 32 |
| PAY 620 AOS | 20 | 12 | 3/4"  | M 36x2   | 46 |

# PAY 300 HN

Swage fitting for hose  
type NY 300

male NPTF thread (AGN),  
material: steel, zincd,  
yellow passivated

Article category 1720

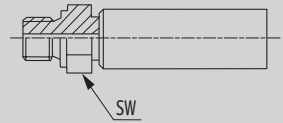


| <i>Designation</i> | <i>DN</i> | <i>size</i> | <i>inch</i> | <i>thread size</i> | <i>SW</i> |
|--------------------|-----------|-------------|-------------|--------------------|-----------|
| PAY 306 HN         | 6         | 4           | 1/4"        | NPT 1/4"           | 14        |
| PAY 306 HN 10      | 8         | 4           | 1/4"        | NPT 3/8"           | 19        |
| PAY 308 HN 10      | 8         | 5           | 5/16"       | NPT 3/8"           | 19        |
| PAY 310 HN         | 10        | 6           | 3/8"        | NPT 3/8"           | 19        |
| PAY 313 HN         | 12        | 8           | 1/2"        | NPT 1/2"           | 22        |
| PAY 316 HN 20      | 16        | 10          | 5/8"        | NPT 3/4"           | 27        |
| PAY 320 HN         | 20        | 12          | 3/4"        | NPT 3/4"           | 27        |
| PAY 320 HN 25      | 20        | 12          | 3/4"        | NPT 1"             | 36        |

# PAY 400 HR

## Swage fitting for hose type NY 400

male BSP thread, seal form A,  
material: steel, zined,  
yellow passivated  
Article category 1720



| <i>Designation</i> | <i>DN</i> | <i>size</i> | <i>inch</i> | <i>thread size</i> | <i>SW</i> |
|--------------------|-----------|-------------|-------------|--------------------|-----------|
|--------------------|-----------|-------------|-------------|--------------------|-----------|

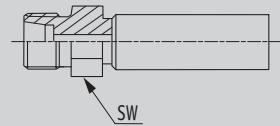
|            |   |   |      |        |    |
|------------|---|---|------|--------|----|
| PAY 406 HR | 6 | 4 | 1/4" | G 1/4" | 19 |
|------------|---|---|------|--------|----|

## PAY 300 HS

### Swage fitting for hose type NY 300

male metric thread, heavy series  
(CES), material: steel, zincd,  
yellow passivated

Article category 1720



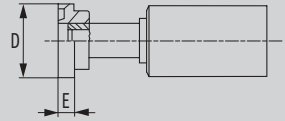
| <i>Designation</i> | <i>DN</i> | <i>size</i> | <i>inch</i> | <i>thread size</i> | <i>SW</i> |
|--------------------|-----------|-------------|-------------|--------------------|-----------|
| PAY 306 HS         | 6         | 4           | 1/4"        | M 18x1,5           | 19        |
| PAY 308 HS         | 8         | 5           | 5/16"       | M 20x1,5           | 22        |
| PAY 310 HS         | 10        | 6           | 3/8"        | M 22x1,5           | 22        |
| PAY 313 HS         | 12        | 8           | 1/2"        | M 24x1,5           | 24        |
| PAY 316 HS         | 16        | 10          | 5/8"        | M 30x2             | 30        |
| PAY 320 HS         | 20        | 12          | 3/4"        | M 36x2             | 36        |
| PAY 325 HS         | 25        | 16          | 1"          | M 42x2             | 46        |

# PAY 300 SF

Swage fitting for hose  
type NY 300

SAE flange, 3000 psi (SFL),  
material: steel, zincd,  
yellow passivated

Article category 1720



*Designation*

*DN*

*size*

*inch*

*D*

*E*

|            |    |    |      |      |     |
|------------|----|----|------|------|-----|
| PAY 313 SF | 12 | 8  | 1/2" | 30,2 | 6,7 |
| PAY 320 SF | 20 | 12 | 3/4" | 38,1 | 6,7 |
| PAY 325 SF | 25 | 16 | 1"   | 44,5 | 8,0 |

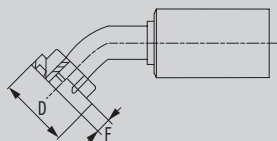


## PAY 300 SF 45

Swage fitting 45° for hose  
type NY 300

SAE flange clamp, 3000 psi (SFL),  
material: steel, zincd,  
yellow passivated

Article category 1720



*Designation*

*DN*

*size*

*inch*

*D*

*F*

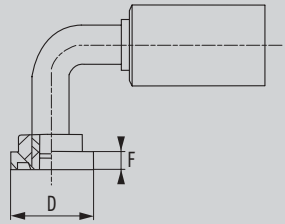
|               |    |    |      |      |     |
|---------------|----|----|------|------|-----|
| PAY 313 SF 45 | 12 | 8  | 1/2" | 30,2 | 6,7 |
| PAY 320 SF 45 | 20 | 12 | 3/4" | 38,1 | 6,7 |

## PAY 300 SF 90

Swage fitting 90° for hose  
type NY 300

SAE flange clamp, 3000 psi (SFL),  
material: steel, zincd,  
yellow passivated

Article category 1720



*Designation*

*DN*

*size*

*inch*

*D*

*F*

PAY 313 SF 90

12

8

1/2"

30,2

6,7

PAY 320 SF 90

20

12

3/4"

38,1

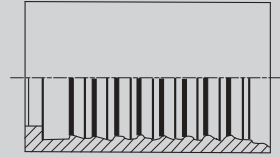
6,7

# PHY 100

## Swage ferrule for hoses type NY 100

material: steel, zined,  
yellow passivated

Article category 1720



*Designation*

*DN*

*size*

*inch*

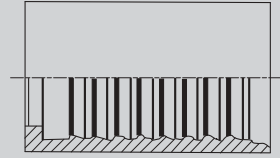
|         |    |    |       |
|---------|----|----|-------|
| PHY 104 | 4  | 2  | 3/16" |
| PHY 106 | 6  | 4  | 1/4"  |
| PHY 108 | 8  | 5  | 5/16" |
| PHY 110 | 10 | 6  | 3/8"  |
| PHY 113 | 13 | 8  | 1/2"  |
| PHY 116 | 16 | 10 | 5/8"  |
| PHY 120 | 20 | 12 | 3/4"  |
| PHY 125 | 25 | 16 | 1"    |

# PHY 2100

Swage ferrule for hose  
type NY 2106

material: steel, zined,  
yellow passivated

Article category 1720



*Designation*

*DN*

*size*

*inch*

PHY 2106

6

4

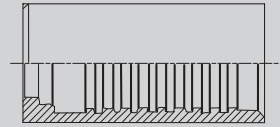
1/4"

# PHY 300

## Swage ferrule for hose type NY 300

material: steel, zined,  
yellow passivated

Article category 1720



*Designation*

*DN*

*size*

*inch*

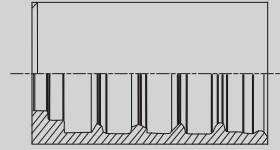
|         |    |    |       |
|---------|----|----|-------|
| PHY 306 | 6  | 4  | 1/4"  |
| PHY 308 | 8  | 5  | 5/16" |
| PHY 310 | 10 | 6  | 3/8"  |
| PHY 313 | 12 | 8  | 1/2"  |
| PHY 316 | 16 | 10 | 5/8"  |
| PHY 320 | 20 | 12 | 3/4"  |
| PHY 325 | 25 | 16 | 1"    |
| PHY 332 | 32 | 20 | 1"1/4 |
| PHY 366 | 6  | 4  | 1/4"  |

## PHY 400

Swage ferrule for hose  
type NY 400

material: steel, zined,  
yellow passivated

Article category 1720



*Designation*

*DN*

*size*

*inch*

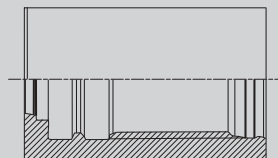
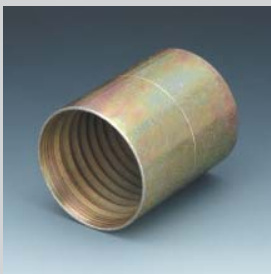
|         |    |    |       |
|---------|----|----|-------|
| PHY 403 | 4  | 2  | 1/8"  |
| PHY 404 | 5  | 3  | 3/16" |
| PHY 406 | 6  | 4  | 1/4"  |
| PHY 408 | 8  | 5  | 5/16" |
| PHY 410 | 10 | 6  | 3/8"  |
| PHY 413 | 12 | 8  | 1/2"  |
| PHY 420 | 20 | 12 | 3/4"  |
| PHY 425 | 25 | 16 | 1"    |

## PHY 600

Swage ferrule for hose  
type NY 600

material: steel, zincd,  
yellow passivated

Article category 1720



*Designation*

*DN*

*size*

*inch*

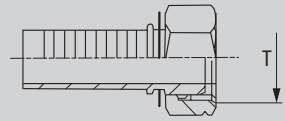
|         |    |    |       |
|---------|----|----|-------|
| PHY 604 | 5  | 3  | 3/16" |
| PHY 608 | 8  | 5  | 5/16" |
| PHY 613 | 12 | 8  | 1/2"  |
| PHY 620 | 20 | 12 | 3/4"  |

## PNY AFL

### Swage nipple for hose type NY

union nut, light series, metric  
with 24° cone (DKL),  
material: steel, zincd,  
yellow passivated

Article category 1720



*Designation*

*DN*

*size*

*inch*

*thread*

PNY 06 AFL

6

4

G 1/4"

M 14x1,5



## PNY HR

### Swage nipple for hose type NY

male thread BSP, flat seat, seal form A, material: steel, zincd, yellow passivated

Article category 1720



*Designation*

*DN*

*size*

*inch*

*thread*

PNY 04 HR 06

4

3

G 3/16"

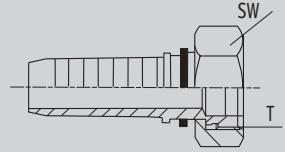
G 1/4"

# PNY AB

## Swage nipple

Swage nipple with BSP union nut, 60° cone (DKR), material: steel, zined, yellow passivated

Article category 1720



*Designation*

*DN*

*size*

*inch*

*thread*

PNY 04 AB 06

5

3

3/16"

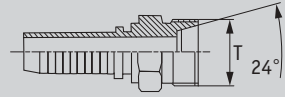
G 1/4"

# PNY HL

## Swage nipple

Swage nipple with male thread, 24° cone, light series (DKR), material: steel, zincd, yellow passivated

Article category 1720



*Designation*

*DN*

*size*

*inch*

*thread*

PNY 04 HL

5

3

3/16"

M 12x1,5

# PNY AOL

## Swage nipple

Swage nipple with 24° cone, O-ring, metric union nut, light series (DK0L), material: steel, zined, yellow passivate

Article category 1720



*Designation*

*DN*

*size*

*inch*

*thread*

|            |    |   |       |          |
|------------|----|---|-------|----------|
| PNY 04 AOL | 5  | 3 | 3/16" | M 12x1,5 |
| PNY 08 AOL | 8  | 5 | 5/16" | M 16x1,5 |
| PNY 10 AOL | 10 | 6 | 3/8"  | M 18x1,5 |

# PNY 2100 AOS

## Swage nipple

Swage nipple with 24° cone, O-ring, metric union nut, heavy series (DK05), material: steel, zined, yellow passivated

Article category 1720



*Designation*

*DN*

*size*

*inch*

*thread*

PNY 2106 AOS

6

4

1/4"

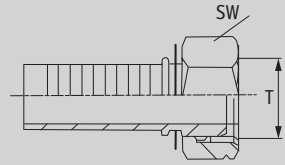
M 18x1,5

# PNY 2100 AB

## Swage nipple

Swage nipple for hose type NY ,  
BSP union nut, 60° cone (DKR),  
material: steel, zincd,  
yellow passivated

Article category 1720



*Designation*

*DN*

*size*

*inch*

*thread*

PNY 2106 AB

6

4

1/4"

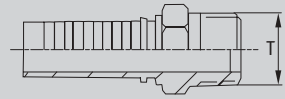
G 1/4"

# PNY 2100 HN

## Swage nipple

Swage nipple for hose type NY,  
male NPTF thread and 60° cone  
(AGN), material: steel, zincd,  
yellow passivated

Article category 1720



*Designation*

*DN*

*size*

*inch*

*thread*

PNY 2106 HN 10

6

4

1/4"

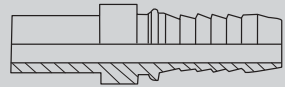
NPT 3/8"-18

## PNY FL

### Swage nipple for hose type NY

with standpipe, light series,  
cutting ring connection (BEL),  
material: steel, zined,  
yellow passivated

Article category 1720



*Designation*

*DN*

*size*

*inch*

*tube-Ø*

PNY 04 FL

5

3

3/16"

6

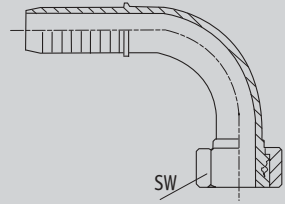


## PNY AOL 90

Swage nipple 90° for hose  
type NY

24° cone, O-ring, metric union  
nut, light series (DKOL),  
material: steel, zincd,  
yellow passivated

Article category 1720



*Designation*

*DN*

*size*

*inch*

*thread*

PNY 08 AOL 90

8

5

5/16"

M 16x1,5

PNY 10 AOL 90

10

6

3/8"

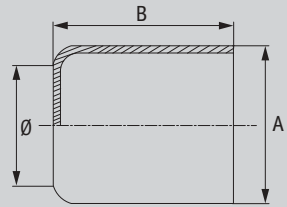
M 18x1,5

# SIH 100

## Swage ferrule for hose type SI 100

swage socket, material: steel,  
zinc-plated, yellow passivated

Article category 1800



*Designation*

*A*

*bore*

*B*

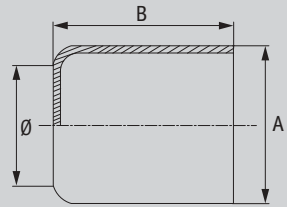
|         |      |      |    |
|---------|------|------|----|
| SIH 103 | 10,0 | 6,5  | 17 |
| SIH 104 | 12,0 | 7,5  | 20 |
| SIH 106 | 13,5 | 10,0 | 20 |
| SIH 108 | 17,0 | 11,7 | 20 |
| SIH 110 | 19,0 | 13,8 | 26 |
| SIH 113 | 24,5 | 17,0 | 33 |
| SIH 116 | 28,0 | 20,5 | 34 |

# SIH 200

Swage ferrule for hose  
type SI 200

material: steel, zinc-plated,  
yellow passivated

Article category 1800



*Designation*

*A*

*bore*

*B*

SIH 204

12,0

7,5

20

SIH 206

13,5

10,0

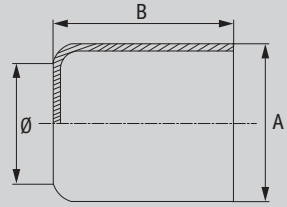
20

## SIH 300

Swage ferrule for hose  
type SI 300

material: steel, zinc-plated,  
yellow passivated

Article category 1800



*Designation*

*A*

*bore*

*B*

SIH 304

13,5

7,5

20

SIH 306

15,0

10,0

20

SIH 308

17,0

11,7

21

SIH 310

22,0

15,6

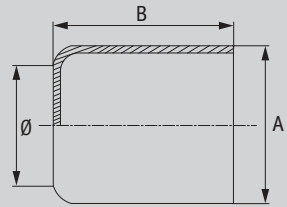
32

## SIH 400

Swage ferrule for hose  
type SI 400

material: steel, zinc-plated,  
yellow passivated

Article category 1800



*Designation*

*A*

*bore*

*B*

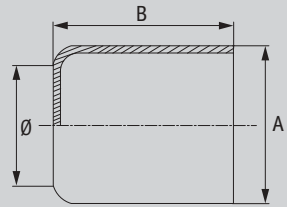
|         |      |      |    |
|---------|------|------|----|
| SIH 404 | 13,5 | 7,5  | 20 |
| SIH 406 | 17,0 | 11,7 | 21 |
| SIH 408 | 18,0 | 13,8 | 21 |
| SIH 410 | 22,0 | 15,6 | 32 |
| SIH 413 | 26,5 | 19,5 | 33 |

# SIH 500

Swage ferrule for hose  
type SI 500

material: steel, zinc-plated,  
yellow passivated

Article category 1800



*Designation*

*A*

*bore*

*B*

SIH 504

9,0

5,5

17

SIH 510

15,0

11,7

20

SIH 513

18,0

13,8

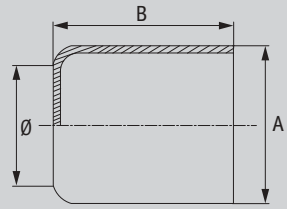
31

## SIH 600

Swage ferrule for hose  
type SI 600

material: steel, zinc-plated,  
yellow passivated

Article category 1800



*Designation*

*A*

*bore*

*B*

SIH 605

11,0

6,5

17

SIH 606

13,5

7,5

20

SIH 613

22,0

15,6

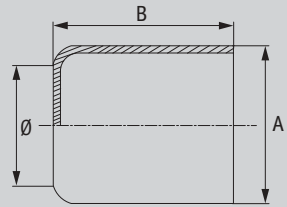
32

# SIH 700

Swage ferrule for hose  
type SI 700

material: steel, zinc-plated,  
yellow passivated

Article category 1800



*Designation*

*A*

*bore*

*B*

SIH 706

15,0

7,5

20

SIH 713

23,0

17,0

32



## SIN AFL

### Swage nipple for hose type SI

24° cone, multiseal, metric union nut, light series (DKL), material: steel, zincd, yellow passivated

Article category 1801



*Designation*

*DN*

*thread*

|               |    |        |
|---------------|----|--------|
| SIN 03 AFL 02 | 3  | 10x1   |
| SIN 04 AFL    | 4  | 12x1,5 |
| SIN 04 AFL 02 | 4  | 10x1   |
| SIN 04 AFL 06 | 4  | 14x1,5 |
| SIN 04 AFL 08 | 4  | 16x1,5 |
| SIN 06 AFL    | 6  | 14x1,5 |
| SIN 06 AFL 08 | 6  | 16x1,5 |
| SIN 08 AFL    | 8  | 16x1,5 |
| SIN 08 AFL 10 | 8  | 18x1,5 |
| SIN 10 AFL    | 10 | 18x1,5 |
| SIN 13 AFL    | 13 | 22x1,5 |
| SIN 13 AFL 16 | 12 | 26x1,5 |
| SIN 16 AFL    | 16 | 26x1,5 |

## SIN AFL 90

Swage nipple 90° for hose  
type SI

24° cone, multiseal, metric union  
nut, light series (DKL),  
material: steel, zincd,  
yellow passivated

Article category 1801



*Designation*

*DN*

*thread*

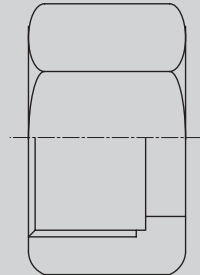
|                  |    |          |
|------------------|----|----------|
| SIN 03 AFL 02 90 | 3  | M 10x1,0 |
| SIN 04 AFL 02 90 | 4  | M 10x1,0 |
| SIN 04 AFL 90    | 4  | M 12x1,5 |
| SIN 06 AFL 90    | 6  | M 14x1,5 |
| SIN 08 AFL 90    | 8  | M 16x1,5 |
| SIN 10 AFL 90    | 10 | M 18x1,5 |
| SIN 13 AFL 90    | 13 | M 22x1,5 |

# SUEM L

## Union nut, metric

Union nut type UM for swage fitting of the SI series, similar to DIN 3870, (see type DK), material: steel, zincd, yellow passivated

Article category 1802



*Designation*

*DN*

*thread*

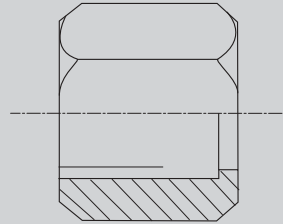
|           |    |          |
|-----------|----|----------|
| SUEM 02 L | 3  | M 10x1,0 |
| SUEM 04 L | 4  | M 12x1,5 |
| SUEM 06 L | 6  | M 14x1,5 |
| SUEM 08 L | 8  | M 16x1,5 |
| SUEM 10 L | 10 | M 18x1,5 |
| SUEM 13 L | 12 | M 22x1,5 |
| SUEM 16 L | 16 | M 26x1,5 |

# SUEM R

## Union nut, BSP

Union nut type UM for swage fitting of the SI series, similar to DIN 3870, (see type DK), material: steel, zincd, yellow passivated

Article category 1803



*Designation*

*DN*

*thread*

|              |    |          |
|--------------|----|----------|
| SUEM 03 R 04 | 3  | 1/8" BSP |
| SUEM 04 R 06 | 4  | 1/4" BSP |
| SUEM 06 R    | 6  | 1/4" BSP |
| SUEM 08 R 10 | 8  | 3/8" BSP |
| SUEM 10 R 13 | 10 | 1/2" BSP |

## LOET DK

### Soldering nipple type LN

similar to DIN 7608,  
material: steel, zincd,  
yellow passivated

Article category 1804



*Designation*

*for tube-Ø*

*for union nut*

|            |    |          |
|------------|----|----------|
| LOET 03 DK | 5  | UM 5/10  |
| LOET 04 DK | 6  | UM 6/12  |
| LOET 06 DK | 8  | UM 8/14  |
| LOET 08 DK | 10 | UM 10/16 |
| LOET 10 DK | 12 | UM 12/18 |

# SIN DES

## Swage nipple

Diesel quick connector nut type  
DES, material: steel, zincd,  
yellow passivated

Article category 1804



*Designation*

*for tube-Ø*

*thread*

SIN 12 DES

6

M 12x1,5

SIN 14 DES

6

M 14x1,5

# SIN DK

## Swage nipple

Swage nipple for nut type SUEM or SUEM R, material: steel, zined, yellow passivated

Article category 1805



*Designation*

*DN*

*thread*

|              |       |            |
|--------------|-------|------------|
| SIN 03 DK    | 3     | UM 5/10"   |
| SIN 04 DK    | 4     | UM 6/12"   |
| SIN 04 DK 06 | 4/6   | UM 8/14"   |
| SIN 04 DK 08 | 4/8   | UM 10/16"  |
| SIN 06 DK    | 6     | UM 8/14"   |
| SIN 06 DK 08 | 6/8   | UM 10/16"  |
| SIN 08 DK    | 8     | UM 10/16 " |
| SIN 08 DK 10 | 8/10  | UM 12/18"  |
| SIN 10 DK    | 10    | UM 12/18"  |
| SIN 13 DK    | 12    | UM 15/18"  |
| SIN 13 DK 16 | 12/16 | UM 18/26"  |
| SIN 16 DK    | 16    | UM 18/26"  |

# SIN AM

## Swage nipple

Union nut and metric thread,  
flat seat, material: steel, zincd,  
yellow passivated

Article category 1806



*Designation*

*DN*

*thread*

|              |       |        |
|--------------|-------|--------|
| SIN 03 AM 02 | 3     | 10x1   |
| SIN 04 AM    | 4     | 12x1,5 |
| SIN 04 AM 02 | 3     | 10x1   |
| SIN 06 AM    | 6     | 14x1,5 |
| SIN 08 AM    | 8     | 16x1,5 |
| SIN 10 AM    | 10    | 18x1,5 |
| SIN 13 AM    | 12    | 22x1,5 |
| SIN 13 AM 16 | 12/16 | 26x1,5 |
| SIN 16 AM    | 16    | 26x1,5 |

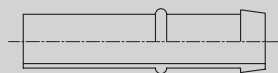


## SIN FL

### Swage nipple with standpipe

Standpipe type, light series,  
cutting ring connection (BEL),  
material: steel, zincd,  
yellow passivated

Article category 1807



*Designation*

*DN*

*tube-Ø*

*for hose*

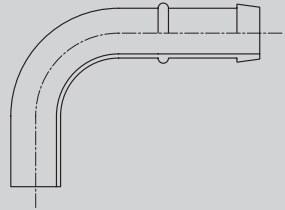
|              |    |    |     |
|--------------|----|----|-----|
| SIN 03 FL 02 | 3  | 4  | 4/5 |
| SIN 04 FL    | 4  | 6  | 5/6 |
| SIN 04 FL 02 | 4  | 4  | 4/5 |
| SIN 04 FL 03 | 4  | 5  | 5/6 |
| SIN 06 FL    | 6  | 8  | 8   |
| SIN 08 FL    | 8  | 10 | 10  |
| SIN 10 FL    | 10 | 12 | 12  |
| SIN 13 FL    | 12 | 15 | 15  |
| SIN 16 FL    | 16 | 18 | 18  |

## SIN FL 90

### Swage nipple with standpipe

Swage nipple 90° with standpipe, light series, cutting ring connection, material: steel, zined, yellow passivated

Article category 1807



*Designation*

*DN*

*tube-Ø*

*for hose*

|              |    |    |     |
|--------------|----|----|-----|
| SIN 04 FL 90 | 4  | 6  | 5/6 |
| SIN 06 FL 90 | 6  | 8  | 8   |
| SIN 08 FL 90 | 8  | 10 | 10  |
| SIN 10 FL 90 | 10 | 12 | 12  |
| SIN 13 FL 90 | 13 | 15 | 15  |
| SIN 16 FL 90 | 16 | 18 | 18  |

# SIN H

## Swage nipple

male metric thread, 60° cone seat, material: steel, zincd, passivated

Article category 1808



*Designation*

*DN*

*thread*

*for hose*

|             |       |          |     |
|-------------|-------|----------|-----|
| SIN 03 H 02 | 3     | M 10x1,0 | 5/6 |
| SIN 04 H    | 4     | M 12x1,5 | 5/6 |
| SIN 06 H    | 6     | M 14x1,5 | 8   |
| SIN 08 H    | 8     | M 16x1,5 | 10  |
| SIN 10 H    | 10    | M 18x1,5 | 12  |
| SIN 13 H    | 12    | M 22x1,5 | 15  |
| SIN 13 H 16 | 12/16 | M 26x1,5 | 15  |
| SIN 16 H    | 16    | M 26x1,5 | 18  |

# SIN HL

## Swage nipple

male metric thread, light series,  
24° cone seat, light series (CEL),  
material: steel, zincd,  
yellow passivated

Article category 1809



| <i>Designation</i> | <i>DN</i> | <i>thread</i> | <i>for tube</i> | <i>for hose</i> |
|--------------------|-----------|---------------|-----------------|-----------------|
| SIN 03 HL          | 3         | M 10x1,0      | 5 L             | 5/6             |
| SIN 04 HL          | 4         | M 12x1,5      | 6 L             | 5/6             |
| SIN 06 HL          | 6         | M 14x1,5      | 8 L             | 8               |
| SIN 08 HL          | 8         | M 16x1,5      | 10 L            | 10              |
| SIN 10 HL          | 10        | M 18x1,5      | 12 L            | 12              |
| SIN 13 HL          | 12        | M 22x1,5      | 15 L            | 15              |
| SIN 13 HL 16       | 12/16     | M 26x1,5      | 18 L            | 15              |
| SIN 16 HL          | 16        | M 26x1,5      | 18 L            | 18              |

# SIN HM

## Swage nipple

with male metric thread, flat seat, material: steel, zincd, yellow passivated

Article category 1810



*Designation*

*DN*

*thread*

*for hose*

|              |       |          |    |
|--------------|-------|----------|----|
| SIN 13 HM    | 12    | M 22x1,5 | 15 |
| SIN 13 HM 16 | 12/16 | M 26x1,5 | 15 |
| SIN 16 HM    | 16    | M 26x1,5 | 18 |

## SIN B

### Swage nipple

banjo swage fitting for hose type  
SI, similar to DIN 7642,  
material: steel, zincd,  
yellow passivated  
Article category 1811



*Designation*

*DN*

*screw bore*

*for hose*

|             |       |    |     |
|-------------|-------|----|-----|
| SIN 03 B 02 | 3     | 8  | 5/6 |
| SIN 04 B    | 4     | 10 | 5/6 |
| SIN 04 B 02 | 3     | 8  | 5/6 |
| SIN 04 B 06 | 4/6   | 12 | 5/6 |
| SIN 04 B 08 | 4/8   | 14 | 5/6 |
| SIN 06 B    | 6     | 12 | 8   |
| SIN 06 B 08 | 6/8   | 14 | 8   |
| SIN 08 B    | 8     | 14 | 10  |
| SIN 08 B 06 | 8/6   | 12 | 10  |
| SIN 08 B 10 | 8/10  | 16 | 10  |
| SIN 08 B 13 | 8/12  | 18 | 10  |
| SIN 10 B    | 10    | 16 | 12  |
| SIN 10 B 13 | 10/12 | 18 | 12  |
| SIN 13 B    | 12    | 18 | 15  |
| SIN 13 B 16 | 12/16 | 22 | 15  |
| SIN 13 B 20 | 12/20 | 26 | 15  |
| SIN 16 B    | 16    | 22 | 18  |
| SIN 16 B 20 | 16/20 | 26 | 18  |

## SIN B 90

### Swage nipple 90°

banjo swage fitting for hose type  
SI, type RBR, horizontal bore,  
material: steel, zincd,  
yellow passivated  
Article category 1811



*Designation*

*DN*

*screw bore*

*suitable for hose*

|                |   |    |     |
|----------------|---|----|-----|
| SIN 03 B 02 90 | 3 | 8  | 5/6 |
| SIN 04 B 90    | 4 | 10 | 5/6 |
| SIN 06 B 90    | 6 | 12 | 8   |
| SIN 08 B 90    | 8 | 14 | 10  |

## SIN BD

### Swage nipple, banjo

double connector for banjo bolt,  
metric, material: steel, zincd,  
yellow passivated

Article category 1812



*Designation*

*DN*

*screw bore*

*suitable for hose*

SIN 03 BD 02

3

8

5/6

SIN 04 BD

4

10

5/6

SIN 06 BD

6

12

8

SIN 08 BD

8

14

10

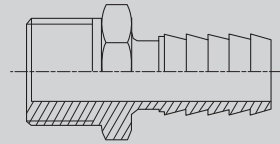


# SIN HN

## Swage nipple

with male NPT connection, AGN,  
material: steel, zined,  
yellow passivated

Article category 1813



*Designation*

*DN*

*thread*

|              |   |          |
|--------------|---|----------|
| SIN 03 HN 04 | 3 | 1/8" NPT |
| SIN 04 HN    | 4 | 1/8" NPT |
| SIN 04 HN 06 | 4 | 1/4" NPT |
| SIN 06 HN    | 6 | 1/4" NPT |
| SIN 08 HN 10 | 8 | 3/8" NPT |

# SIN AB

## Swage nipple

type S, similar to DIN 7608, with 60° cone and BSP union nut, material: steel, zincd, yellow passivated  
Article category 1814



*Designation*

*DN*

*thread for union nut*

|              |    |      |
|--------------|----|------|
| SIN 04 AB    | 4  | 1/8" |
| SIN 04 AB 06 | 4  | 1/4" |
| SIN 06 AB    | 6  | 1/4" |
| SIN 08 AB 10 | 8  | 3/8" |
| SIN 10 AB 13 | 10 | 1/2" |

## SIN HB

### Swage nipple

60° cone, male BSP thread (AGR),  
material: steel, zincd,  
yellow passivated

Article category 1815



*Designation*

*DN*

*thread*

*for hose*

|              |    |        |     |
|--------------|----|--------|-----|
| SIN 03 HB 04 | 3  | R 1/8" | 5/6 |
| SIN 04 HB 06 | 4  | R 1/4" | 5/6 |
| SIN 06 HB    | 6  | R 1/4" | 8   |
| SIN 08 HB 10 | 8  | R 3/8" | 10  |
| SIN 10 HB 13 | 10 | R 1/2" | 12  |
| SIN 13 HB    | 12 | R 1/2" | 15  |

# PHF 100

## Swage ferrule hose type TF 100

Polyflex hose type,  
material: steel, zincd,  
yellow passivated

Article category 1850



*Designation*

*DN*

*size*

*inch*

|         |    |    |       |
|---------|----|----|-------|
| PHF 104 | 4  | 3  | 3/16" |
| PHF 106 | 6  | 4  | 1/4"  |
| PHF 108 | 8  | 5  | 5/16" |
| PHF 110 | 10 | 6  | 3/8"  |
| PHF 113 | 13 | 8  | 1/2"  |
| PHF 116 | 16 | 10 | 5/8"  |
| PHF 120 | 20 | 12 | 3/4"  |
| PHF 125 | 25 | 16 | 1"    |

## PHF 200

### Swage ferrule hose type TF 200

Polyflex hose type,  
material: steel, zincd,  
yellow passivated

Article category 1850



*Designation*

*DN*

*size*

*inch*

|         |    |    |       |
|---------|----|----|-------|
| PHF 206 | 6  | 4  | 1/4"  |
| PHF 208 | 8  | 5  | 5/16" |
| PHF 210 | 10 | 6  | 3/8"  |
| PHF 213 | 12 | 8  | 1/2"  |
| PHF 216 | 16 | 10 | 5/8"  |
| PHF 220 | 20 | 12 | 3/4"  |
| PHF 225 | 25 | 16 | 1"    |

# Index

## A

AFH 100 32

## B

BFH 200 33

## F

Ferrule for high pressure applications 32

Flange clamp 2-4

## L

LOET B 28

LOET BD 29

LOET DK 93

LOET H 30

## N

ND A 10

ND AB 45 22

ND AB 90 23

ND AB 21

ND AFL 45 8

ND AFL 90 9

ND AFL 7

ND AJ 16

ND ASA 17

ND B 14

ND BD 15

ND FL 11

ND FS 12

ND HB 24

ND HL 13

ND HN 18

ND HSD 19

ND VB 20

## P

PAY 300 AB 50

PAY 300 AJ 55

PAY 300 AOS 45 57

PAY 300 AOS 90 58

PAY 300 AOS 56

PAY 300 HN 61

PAY 300 HS 63

PAY 300 SF 45 65

PAY 300 SF 90 66

PAY 300 SF 64

PAY 400 AB 51

PAY 400 AFL 52

PAY 400 AFS 54

PAY 400 AOS 59

PAY 400 HR 62

PAY 600 AFL 53

PAY 600 AOS 60

PHF 100 108

# Index

|                                   |       |                             |     |
|-----------------------------------|-------|-----------------------------|-----|
| PHF 200                           | 109   | PNY AOL                     | 76  |
| PHY 100                           | 67    | PNY FL                      | 80  |
| PHY 2100                          | 68    | PNY HL                      | 75  |
| PHY 300                           | 69    | PNY HR                      | 73  |
| PHY 400                           | 70    |                             |     |
| PHY 600                           | 71    | <b>S</b>                    |     |
| Plug-in nipple (double connector) | 20    | SAE flange clamp            | 1   |
| Plug-in nipple 45°                | 8     | Sealing for SAE flange      | 5   |
| Plug-in nipple 45°                | 22    | Sealing ring for SAE flange | 6   |
| Plug-in nipple 90°                | 9     | SF ORING PU                 | 6   |
| Plug-in nipple 90°                | 23    | SF ORING                    | 5   |
| Plug-in nipple as banjo           | 15    | SFH 4 L                     | 2   |
| Plug-in nipple with banjo         | 14    | SFH 6 4 L                   | 4   |
| Plug-in nipple with standpipe     | 11-12 | SFH 6                       | 3   |
| Plug-in nipple                    | 7     | SFH                         | 1   |
| Plug-in nipple                    | 10    | SFT 6                       | 27  |
| Plug-in nipple                    | 13    | SFT ES                      | 26  |
| Plug-in nipple                    | 16-19 | SFT                         | 25  |
| Plug-in nipple                    | 21    | SIH 100                     | 82  |
| Plug-in nipple                    | 24    | SIH 200                     | 83  |
| PN LOET                           | 31    | SIH 300                     | 84  |
| PNY 2100 AB                       | 78    | SIH 400                     | 85  |
| PNY 2100 AOS                      | 77    | SIH 500                     | 86  |
| PNY 2100 HN                       | 79    | SIH 600                     | 87  |
| PNY AB                            | 74    | SIH 700                     | 88  |
| PNY AFL                           | 72    | SIN AB                      | 106 |
| PNY AOL 90                        | 81    | SIN AFL 90                  | 90  |

# Index

|                                        |       |                                           |       |
|----------------------------------------|-------|-------------------------------------------|-------|
| SIN AFL                                | 89    | Swage ferrule for hose type SI 200        | 83    |
| SIN AM                                 | 96    | Swage ferrule for hose type SI 300        | 84    |
| SIN B 90                               | 103   | Swage ferrule for hose type SI 400        | 85    |
| SIN B                                  | 102   | Swage ferrule for hose type SI 500        | 86    |
| SIN BD                                 | 104   | Swage ferrule for hose type SI 600        | 87    |
| SIN DES                                | 94    | Swage ferrule for hose type SI 700        | 88    |
| SIN DK                                 | 95    | Swage ferrule for hoses type NY 100       | 67    |
| SIN FL 90                              | 98    | Swage ferrule hose type TF 100            | 108   |
| SIN FL                                 | 97    | Swage ferrule hose type TF 200            | 109   |
| SIN H                                  | 99    | Swage fitting 45° for hose<br>type NY 300 | 57    |
| SIN HB                                 | 107   | Swage fitting 45° for hose<br>type NY 300 | 65    |
| SIN HL                                 | 100   | Swage fitting 90° for hose<br>type NY 300 | 58    |
| SIN HM                                 | 101   | Swage fitting 90° for hose<br>type NY 300 | 66    |
| SIN HN                                 | 105   | Swage fitting for hose type NY 300        | 50    |
| Soldering flange                       | 25    | Swage fitting for hose type NY 300        | 52    |
| Soldering head with SAE<br>flange head | 26-27 | Swage fitting for hose type NY 300        | 55    |
| Soldering head                         | 28    | Swage fitting for hose type NY 300        | 56    |
| Soldering nipple                       | 29-31 | Swage fitting for hose type NY 300        | 61    |
| Solding nipple type LN                 | 93    | Swage fitting for hose type NY 300        | 63-64 |
| SUEM L                                 | 91    | Swage fitting for hose type NY 400        | 51    |
| SUEM R                                 | 92    | Swage fitting for hose type NY 400        | 54    |
| Swage ferrule for hose type NY 2106    | 68    | Swage fitting for hose type NY 400        | 59    |
| Swage ferrule for hose type NY 300     | 69    | Swage fitting for hose type NY 400        | 62    |
| Swage ferrule for hose type NY 400     | 70    | Swage fitting for hose type NY 600        | 53    |
| Swage ferrule for hose type NY 600     | 71    |                                           |       |
| Swage ferrule for hose type NY 100     | 82    |                                           |       |



# Index

|                                    |         |         |    |
|------------------------------------|---------|---------|----|
| Swage fitting for hose type NY 600 | 60      | TRP A   | 44 |
| Swage nipple 90° for hose type NY  | 81      | TRP AB  | 48 |
| Swage nipple 90° for hose type SI  | 90      | TRP AJ  | 49 |
| Swage nipple 90°                   | 103     | TRP AOS | 45 |
| Swage nipple for hose type NY      | 72-73   | TRP FL  | 40 |
| Swage nipple for hose type NY      | 80      | TRP FS  | 41 |
| Swage nipple for hose type SI      | 89      | TRP HB  | 47 |
| Swage nipple with standpipe        | 40-41   | TRP HL  | 42 |
| Swage nipple with standpipe        | 97-98   | TRP HN  | 46 |
| Swage nipple                       | 42-49   | TRP HS  | 43 |
| Swage nipple                       | 74-79   |         |    |
| Swage nipple                       | 94-96   |         |    |
| Swage nipple                       | 99-102  |         |    |
| Swage nipple                       | 105-107 |         |    |
| Swage nipple, banjo                | 104     |         |    |

## T

|                                                                           |       |
|---------------------------------------------------------------------------|-------|
| Threaded ferrule for high pressure<br>application ranges for TBF 200 hose | 33    |
| Threaded nipple with standpipe                                            | 34-35 |
| Threaded nipple                                                           | 36-39 |
| TRN A                                                                     | 38    |
| TRN AB                                                                    | 39    |
| TRN FL                                                                    | 34    |
| TRN FS                                                                    | 35    |
| TRN HL                                                                    | 36    |
| TRN HS                                                                    | 37    |

## U

|                   |    |
|-------------------|----|
| Union nut, BSP    | 92 |
| Union nut, metric | 91 |