

Product range 9 – Accessories



OR SET

O-Ring Set

Article category 9400

Designation

packing unit

| | |
|----------|-----------|
| OR SET M | 404 Stück |
|----------|-----------|

| | |
|----------------|-----------|
| OR SET M 90 SH | 404 Stück |
|----------------|-----------|

Other O-ring sizes available.

OR SET Z

O-ring set, BSP

between 2,3 mm and 28,17 mm

70 shore

Article category 9400

Designation

packing unit

| | |
|----------------|-----------|
| OR SET Z | 404 Stück |
| OR SET Z 90 SH | 404 Stück |

CR SET

Copper ring set

Article category 9500

Designation

packing unit

CR SET

404 Stück

Other O-ring sizes available.

ASK

Hose clamps

according to DIN 3017

Article category 9600



| <i>Designation</i> | <i>band width</i> | <i>tension range</i> | <i>Designation</i> | <i>band width</i> | <i>tension range</i> |
|--------------------|-------------------|----------------------|--------------------|-------------------|----------------------|
| ASK 08-12 | 9 | 8-12 | ASK 77-95 | 12,2 | 77-95 |
| ASK 08-14 | 9 | 8-14 | ASK 80-100 | 12,2 | 80-100 |
| ASK 10-16 | 9 | 10-16 | ASK 87-112 | 12,2 | 87-112 |
| ASK 11-17 | 9 | 11-17 | ASK 90-110 | 12,2 | 90-110 |
| ASK 12-20 | 9 | 12-20 | ASK 100-120 | 12,2 | 100-120 |
| ASK 13-20 | 9 | 13-20 | ASK 104-138 | 12,2 | 104-138 |
| ASK 15-24 | 12,2 | 15-24 | ASK 110-130 | 12,2 | 110-130 |
| ASK 16-25 | 12,2 | 16-25 | ASK 120-140 | 12,2 | 120-140 |
| ASK 19-28 | 12,2 | 19-28 | ASK 130-150 | 12,2 | 130-150 |
| ASK 20-32 | 12,2 | 20-32 | ASK 130-165 | 12,2 | 130-65 |
| ASK 22-32 | 12,2 | 22-32 | ASK 140-160 | 12,2 | 140-160 |
| ASK 25-40 | 12,2 | 25-40 | ASK 150-170 | 12,2 | 150-170 |
| ASK 26-38 | 12,2 | 26-38 | ASK 150-180 | 12,2 | 150-180 |
| ASK 32-44 | 12,2 | 32-44 | ASK 160-180 | 12,2 | 160-180 |
| ASK 32-50 | 12,2 | 32-50 | ASK 170-190 | 12,2 | 170-190 |
| ASK 38-50 | 12,2 | 38-50 | ASK 175-205 | 12,2 | 175-205 |
| ASK 40-60 | 12,2 | 40-60 | ASK 180-200 | 12,2 | 180-200 |
| ASK 44-56 | 12,2 | 44-56 | ASK 190-210 | 12,2 | 190-210 |
| ASK 50-65 | 12,2 | 50-65 | ASK 200-220 | 12,2 | 200-220 |
| ASK 50-70 | 12,2 | 50-70 | ASK 200-231 | 12,2 | 200-231 |
| ASK 58-75 | 12,2 | 58-75 | ASK 210-230 | 12,2 | 210-230 |
| ASK 60-80 | 12,2 | 60-80 | ASK 220-240 | 12,2 | 220-240 |
| ASK 68-85 | 12,2 | 68-85 | ASK 226-256 | 12,2 | 226-256 |
| ASK 70-90 | 12,2 | 70-90 | | | --> |

ASK

Hose clamps

according to DIN 3017

Article category 9600



Designation *band width* *tension range*

<---

| | | |
|-------------|------|---------|
| ASK 230-250 | 12,2 | 230-250 |
| ASK 240-260 | 12,2 | 240-260 |
| ASK 250-270 | 12,2 | 250-270 |
| ASK 251-282 | 12,2 | 251-282 |
| ASK 260-280 | 12,2 | 260-280 |
| ASK 270-290 | 12,2 | 270-290 |
| ASK 277-307 | 12,2 | 277-307 |
| ASK 280-300 | 12,2 | 280-300 |
| ASK 290-310 | 12,2 | 290-310 |

ASK SET

Hose clamp set

Article category 9622



Designation

ASK SET 1

SCHELLEN-SET A

DIN tube clamps

complete with case
and screw-driver

Article category 9601



Designation

packing unit

SCHELLEN SET A

135 Teile

SCHELLEN-SET B

DIN tube clamps

complete with case
and screw-driver

Article category 9601



Designation

packing unit

SCHELLEN SET B

265 Teile

ESK

Hose clamps

according to SMS width 12,2 mm
(Swedish norm)

stainless steel, acid-proof

Article category 9602



| <i>Designation</i> | <i>band width</i> | <i>tension range</i> | <i>Material</i> |
|--------------------|-------------------|----------------------|-----------------|
|--------------------|-------------------|----------------------|-----------------|

| | | | |
|-------------|------|---------|-----------|
| ESK 11-17 | 9 | 11-17 | Edelstahl |
| ESK 15-24 | 9 | 15-24 | Edelstahl |
| ESK 19-28 | 12,2 | 19-28 | Edelstahl |
| ESK 22-32 | 12,2 | 22-32 | Edelstahl |
| ESK 26-38 | 12,2 | 26-38 | Edelstahl |
| ESK 32-44 | 12,2 | 32-44 | Edelstahl |
| ESK 38-50 | 12,2 | 38-50 | Edelstahl |
| ESK 44-56 | 12,2 | 44-56 | Edelstahl |
| ESK 50-65 | 12,2 | 50-65 | Edelstahl |
| ESK 58-75 | 12,2 | 58-75 | Edelstahl |
| ESK 68-85 | 12,2 | 68-85 | Edelstahl |
| ESK 77-95 | 12,2 | 77-95 | Edelstahl |
| ESK 87-112 | 12,2 | 87-112 | Edelstahl |
| ESK 104-138 | 12,2 | 104-138 | Edelstahl |
| ESK 136-165 | 12,2 | 136-165 | Edelstahl |
| ESK 150-180 | 12,2 | 150-180 | Edelstahl |
| ESK 175-205 | 12,2 | 175-205 | Edelstahl |
| ESK 200-231 | 12,2 | 200-231 | Edelstahl |
| ESK 226-256 | 12,2 | 226-256 | Edelstahl |
| ESK 251-282 | 12,2 | 251-282 | Edelstahl |
| ESK 277-307 | 12,2 | 277-307 | Edelstahl |

ESK W2

Hose clamps

stainless steel 1.4016,
screw yellow chromated
Article category 9602



Designation

band width

tension range

| | | |
|----------------|---|---------|
| ESK 08-12 W2 | 9 | 8-12 |
| ESK 10-16 W2 | 9 | 10-16 |
| ESK 12-20 W2 | 9 | 12-20 |
| ESK 16-25 W2 | 9 | 16-25 |
| ESK 20-32 W2 | 9 | 20-32 |
| ESK 25-40 W2 | 9 | 25-40 |
| ESK 32-50 W2 | 9 | 32-50 |
| ESK 40-60 W2 | 9 | 40-60 |
| ESK 50-70 W2 | 9 | 50-70 |
| ESK 60-80 W2 | 9 | 60-80 |
| ESK 70-90 W2 | 9 | 70-90 |
| ESK 80-100 W2 | 9 | 80-100 |
| ESK 90-110 W2 | 9 | 90-110 |
| ESK 100-120 W2 | 9 | 100-120 |
| ESK 110-130 W2 | 9 | 110-130 |
| ESK 120-140 W2 | 9 | 120-140 |
| ESK 130-150 W2 | 9 | 130-150 |

ESK W5

Hose clamps

stainless steel 1.4436

Article category 9602



Designation

band width

tension range

| | | |
|----------------|------|---------|
| ESK 08-14 W5 | 9 | 8-14 |
| ESK 11-17 W5 | 9 | 11-17 |
| ESK 13-20 W5 | 9 | 13-20 |
| ESK 15-24 W5 | | 15-24 |
| ESK 19-28 W5 | 12,2 | 19-28 |
| ESK 22-32 W5 | 12,2 | 20-32 |
| ESK 26-38 W5 | 12,2 | 26-38 |
| ESK 32-44 W5 | 12,2 | 32-44 |
| ESK 38-50 W5 | 12,2 | 38-50 |
| ESK 44-56 W5 | 12,2 | 44-56 |
| ESK 50-65 W5 | 12,2 | 50-65 |
| ESK 58-75 W5 | 12,2 | 58-75 |
| ESK 68-85 W5 | 12,2 | 68-85 |
| ESK 77-95 W5 | 12,2 | 77-95 |
| ESK 87-112 W5 | 12,2 | 98-112 |
| ESK 104-138 W5 | 12,2 | 104-138 |
| ESK 130-165 W5 | 12,2 | 130-165 |
| ESK 150-180 W5 | 12,2 | 150-180 |
| ESK 175-205 W5 | 12,2 | 175-205 |
| ESK 200-231 W5 | 12,2 | 200-231 |
| ESK 226-256 W5 | 12,2 | 226-256 |
| ESK 251-282 W5 | 12,2 | 251-282 |
| ESK 277-307 W5 | 12,2 | 277-307 |

NRS 09

Hose clamps

DIN 3016

Article category 9603



Designation

diameter

band width

| | | |
|-----------|----|---|
| NRS 06-09 | 6 | 9 |
| NRS 08-09 | 8 | 9 |
| NRS 10-09 | 10 | 9 |
| NRS 12-09 | 12 | 9 |
| NRS 14-09 | 14 | 9 |
| NRS 15-09 | 15 | 9 |
| NRS 16-09 | 16 | 9 |
| NRS 18-09 | 18 | 9 |
| NRS 20-09 | 20 | 9 |

NRS 12

Hose clamps

DIN 3016

Article category 9604



Designation

diameter

band width

| | | |
|-----------|----|----|
| NRS 05-12 | 5 | 12 |
| NRS 06-12 | 6 | 12 |
| NRS 08-12 | 8 | 12 |
| NRS 10-12 | 10 | 12 |
| NRS 12-12 | 12 | 12 |
| NRS 13-12 | 13 | 12 |
| NRS 14-12 | 14 | 12 |
| NRS 15-12 | 15 | 12 |
| NRS 16-12 | 16 | 12 |
| NRS 18-12 | 18 | 12 |
| NRS 20-12 | 20 | 12 |
| NRS 22-12 | 22 | 12 |
| NRS 24-12 | 24 | 12 |

NRS 15

Hose clamps

DIN 3016

Article category 9605



Designation

diameter

band width

| | | |
|-----------|----|----|
| NRS 05-15 | 5 | 15 |
| NRS 06-15 | 6 | 15 |
| NRS 07-15 | 7 | 15 |
| NRS 08-15 | 8 | 15 |
| NRS 09-15 | 9 | 15 |
| NRS 10-15 | 10 | 15 |
| NRS 11-15 | 11 | 15 |
| NRS 12-15 | 12 | 15 |
| NRS 13-15 | 13 | 15 |
| NRS 14-15 | 14 | 15 |
| NRS 15-15 | 15 | 15 |
| NRS 16-15 | 16 | 15 |
| NRS 17-15 | 17 | 15 |
| NRS 18-15 | 18 | 15 |
| NRS 19-15 | 19 | 15 |
| NRS 20-15 | 20 | 15 |
| NRS 22-15 | 22 | 15 |
| NRS 24-15 | 24 | 15 |
| NRS 25-15 | 25 | 15 |
| NRS 27-15 | 27 | 15 |
| NRS 30-15 | 30 | 15 |
| NRS 31-15 | 31 | 15 |
| NRS 32-15 | 32 | 15 |
| NRS 38-15 | 38 | 15 |
| NRS 48-15 | 48 | 15 |

NRS 20

Hose clamps

DIN 3016

Article category 9606



Designation

diameter

band width

| | | |
|-----------|----|----|
| NRS 15-20 | 15 | 20 |
| NRS 19-20 | 19 | 20 |
| NRS 20-20 | 20 | 20 |
| NRS 22-20 | 22 | 20 |
| NRS 25-20 | 25 | 20 |
| NRS 28-20 | 28 | 20 |
| NRS 30-20 | 30 | 20 |
| NRS 35-20 | 35 | 20 |
| NRS 37-20 | 37 | 20 |
| NRS 38-20 | 38 | 20 |

NRS 25

Hose clamps

DIN 3016

Article category 9607



Designation

diameter

band width

NRS 15-25

15

25

NRS 22-25

22

25

NRS 30-25

30

25

NRS 38-25

38

25

NRS 42-25

42

25

NRS 50-25

50

25

NRS 60-25

60

25

KSKL

Hose clamps

malleable cast iron hose clamps
(zincd)

Article category 9608



Designation

hose ID; SLW

hose OD

| | | |
|--------------|---------------|---------|
| KSKL 22-29 | 1/2" = 13 mm | 22-29 |
| KSKL 28-34 | 3/4" = 19 mm | 28-34 |
| KSKL 32-40 | 1" = 25 mm | 32-40 |
| KSKL 39-49 | 1"1/4 = 32 mm | 39-49 |
| KSKL 48-60 | 1"1/2 = 38 mm | 48-60 |
| KSKL 60-76 | 2" = 50 mm | 60-76 |
| KSKL 77-94 | 2"1/2 = 63 mm | 77-94 |
| KSKL 94-115 | 3" = 76 mm | 94-115 |
| KSKL 115-145 | 3" = 89 mm | 115-145 |

ESK M

Hose clamps

Article category 9613



Designation

tension range

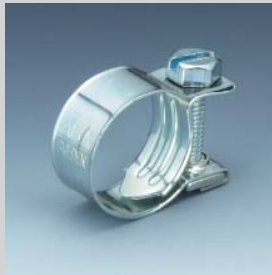
material

| | | |
|-------------|-------|-----------|
| ESK 06-08 M | 6-8 | Edelstahl |
| ESK 07-09 M | 7-9 | Edelstahl |
| ESK 08-10 M | 8-10 | Edelstahl |
| ESK 09-11 M | 9-11 | Edelstahl |
| ESK 10-12 M | 10-12 | Edelstahl |
| ESK 11-13 M | 11-13 | Edelstahl |
| ESK 12-14 M | 12-14 | Edelstahl |
| ESK 13-15 M | 13-15 | Edelstahl |
| ESK 14-16 M | 14-16 | Edelstahl |
| ESK 15-17 M | 15-17 | Edelstahl |

ASK M

Hose clamps

Article category 9614



Designation

tension range

material

| | | |
|-------------|-------|----------------|
| ASK 06-08 M | 6-8 | Stahl verzinkt |
| ASK 07-09 M | 7-9 | Stahl verzinkt |
| ASK 08-10 M | 8-10 | Stahl verzinkt |
| ASK 09-11 M | 9-11 | Stahl verzinkt |
| ASK 10-12 M | 10-12 | Stahl verzinkt |
| ASK 11-13 M | 11-13 | Stahl verzinkt |
| ASK 12-14 M | 12-14 | Stahl verzinkt |
| ASK 13-15 M | 13-15 | Stahl verzinkt |
| ASK 14-16 M | 14-16 | Stahl verzinkt |
| ASK 15-17 M | 15-17 | Stahl verzinkt |

SCHELLEN SET M

Mini clamps

103 parts

Article category 9614



Designation

SCHELLEN SET M

SCHRAUBENDR

Screw driver
for ASK clamps
Article category 9614



Designation

Material

SCHRAUBENDR 30

Dreher

MRS

Hose clamps

rugged version

Article category 9615



Designation

tension range

Designation

tension range

| | | | |
|------------|--------|-------------|---------|
| MRS 17-19 | 17-19 | MRS 104-112 | 104-112 |
| MRS 20-22 | 20-22 | MRS 113-121 | 113-121 |
| MRS 23-25 | 23-25 | MRS 122-130 | 122-130 |
| MRS 26-28 | 26-28 | MRS 131-139 | 131-139 |
| MRS 29-31 | 29-31 | MRS 140-148 | 140-148 |
| MRS 32-35 | 32-35 | MRS 149-161 | 149-161 |
| MRS 36-39 | 36-39 | MRS 162-174 | 162-174 |
| MRS 40-43 | 40-43 | MRS 175-187 | 175-187 |
| MRS 44-47 | 44-47 | MRS 188-200 | 188-200 |
| MRS 48-51 | 48-51 | MRS 201-213 | 201-213 |
| MRS 52-55 | 52-55 | MRS 240-252 | 240-252 |
| MRS 56-59 | 56-59 | MRS 253-265 | 253-265 |
| MRS 60-63 | 60-63 | MRS 266-278 | 266-278 |
| MRS 64-67 | 64-67 | MRS 279-291 | 279-291 |
| MRS 68-73 | 68-73 | MRS 292-304 | 292-304 |
| MRS 74-79 | 74-79 | MRS 253-265 | 253-265 |
| MRS 80-85 | 80-85 | MRS 266-278 | 266-278 |
| MRS 86-91 | 86-91 | MRS 279-291 | 279-291 |
| MRS 92-97 | 92-97 | MRS 292-304 | 292-304 |
| MRS 98-103 | 98-103 | | |

MRSS

Hose clamps

stainless steel 1.4510

bolt: steel, zincd 8.8

Article category 9615



Designation

tension range

band width

Designation

tension range

band width

| | | | | | |
|------------|-------|----|--------------|---------|----|
| MRSS 17-19 | 17-19 | 18 | MRSS 73-79 | 73-79 | 24 |
| MRSS 19-21 | 19-21 | 18 | MRSS 79-85 | 79-85 | 24 |
| MRSS 21-23 | 21-13 | 18 | MRSS 85-91 | 85-91 | 24 |
| MRSS 23-25 | 23-25 | 18 | MRSS 91-97 | 91-97 | 24 |
| MRSS 25-27 | 25-27 | 18 | MRSS 97-104 | 97-104 | 24 |
| MRSS 27-29 | 27-29 | 18 | MRSS 104-112 | 104-112 | 24 |
| MRSS 29-31 | 29-31 | 20 | MRSS 112-121 | 112-121 | 24 |
| MRSS 31-34 | 31-34 | 20 | MRSS 121-130 | 121-130 | 24 |
| MRSS 34-37 | 34-37 | 20 | MRSS 130-140 | 130-140 | 26 |
| MRSS 37-40 | 37-40 | 20 | MRSS 140-150 | 140-150 | 26 |
| MRSS 40-43 | 40-43 | 20 | MRSS 150-162 | 150-162 | 26 |
| MRSS 43-47 | 43-47 | 22 | MRSS 162-174 | 162-174 | 26 |
| MRSS 47-51 | 47-51 | 22 | MRSS 174-187 | 174-187 | 26 |
| MRSS 51-55 | 51-55 | 22 | MRSS 187-200 | 187-200 | 26 |
| MRSS 55-59 | 55-59 | 22 | MRSS 200-213 | 200-213 | 26 |
| MRSS 59-63 | 59-63 | 22 | MRSS 213-226 | 213-226 | 26 |
| MRSS 63-68 | 63-68 | 22 | MRSS 226-239 | 226-239 | 26 |
| MRSS 68-73 | 68-73 | 24 | MRSS 239-252 | 239-252 | 26 |

SBS 12

Gripping jaw

clamp with screw type size 12 mm

belt width

Article category 9618

Designation *band width* \emptyset

| | | |
|-----------|----|----|
| SBS 12-18 | 12 | 18 |
| SBS 12-21 | 12 | 21 |
| SBS 12-22 | 12 | 22 |
| SBS 12-24 | 12 | 28 |
| SBS 12-26 | 12 | 26 |
| SBS 12-28 | 12 | 28 |
| SBS 12-30 | 12 | 30 |
| SBS 12-32 | 12 | 32 |
| SBS 12-34 | 12 | 34 |
| SBS 12-36 | 12 | 36 |
| SBS 12-38 | 12 | 38 |
| SBS 12-40 | 12 | 40 |
| SBS 15-90 | 15 | 90 |

SBS 15

Gripping jaw

clamp with screw type size 15 mm

belt width

Article category 9619

| <i>Designation</i> | <i>band width</i> | <i>∅</i> | <i>Designation</i> | <i>band width</i> | <i>∅</i> |
|--------------------|-------------------|----------|--------------------|-------------------|----------|
| SBS 15-21 | 15 | 21 | SBS 15-54 | 15 | 54 |
| SBS 15-22 | 15 | 22 | SBS 15-56 | 15 | 56 |
| SBS 15-24 | 15 | 24 | SBS 15-58 | 15 | 58 |
| SBS 15-25 | 15 | 25 | SBS 15-60 | 15 | 60 |
| SBS 15-26 | 15 | 26 | SBS 15-62 | 15 | 62 |
| SBS 15-28 | 15 | 28 | SBS 15-64 | 15 | 64 |
| SBS 15-30 | 15 | 30 | SBS 15-66 | 15 | 66 |
| SBS 15-32 | 15 | 32 | SBS 15-68 | 15 | 68 |
| SBS 15-34 | 15 | 34 | SBS 15-70 | 15 | 70 |
| SBS 15-36 | 15 | 36 | SBS 15-72 | 15 | 72 |
| SBS 15-38 | 15 | 38 | SBS 15-74 | 15 | 74 |
| SBS 15-40 | 15 | 40 | SBS 15-76 | 15 | 76 |
| SBS 15-42 | 15 | 42 | SBS 15-78 | 15 | 78 |
| SBS 15-44 | 15 | 44 | SBS 15-80 | 15 | 80 |
| SBS 15-46 | 15 | 46 | SBS 15-82 | 15 | 82 |
| SBS 15-48 | 15 | 48 | SBS 15-84 | 15 | 84 |
| SBS 15-50 | 15 | 50 | SBS 15-86 | 15 | 86 |
| SBS 15-52 | 15 | 52 | SBS 15-88 | 15 | 88 |

SBS 20

Gripping jaw

clamp with screw type size 20 mm

belt width

Article category 9620

| <i>Designation</i> | <i>band width</i> | <i>∅</i> | <i>Designation</i> | <i>band width</i> | <i>∅</i> |
|--------------------|-------------------|----------|--------------------|-------------------|----------|
| SBS 20-25 | 20 | 25 | SBS 20-64 | 20 | 64 |
| SBS 20-28 | 20 | 28 | SBS 20-66 | 20 | 66 |
| SBS 20-30 | 20 | 30 | SBS 20-68 | 20 | 68 |
| SBS 20-32 | 20 | 32 | SBS 20-70 | 20 | 70 |
| SBS 20-34 | 20 | 34 | SBS 20-72 | 20 | 72 |
| SBS 20-36 | 20 | 36 | SBS 20-74 | 20 | 74 |
| SBS 20-38 | 20 | 38 | SBS 20-76 | 20 | 76 |
| SBS 20-40 | 20 | 40 | SBS 20-78 | 20 | 78 |
| SBS 20-42 | 20 | 42 | SBS 20-80 | 20 | 80 |
| SBS 20-44 | 20 | 44 | SBS 20-82 | 20 | 82 |
| SBS 20-46 | 20 | 46 | SBS 20-84 | 20 | 84 |
| SBS 20-48 | 20 | 48 | SBS 20-86 | 20 | 86 |
| SBS 20-50 | 20 | 50 | SBS 20-88 | 20 | 88 |
| SBS 20-52 | 20 | 52 | SBS 20-90 | 20 | 90 |
| SBS 20-54 | 20 | 54 | SBS 20-92 | 20 | 92 |
| SBS 20-56 | 20 | 56 | SBS 20-94 | 20 | 94 |
| SBS 20-58 | 20 | 58 | SBS 20-96 | 20 | 96 |
| SBS 20-60 | 20 | 60 | SBS 20-98 | 20 | 98 |
| SBS 20-62 | 20 | 62 | SBS 20-100 | 20 | 100 |

SBS 25

Gripping jaw

clamp with screw type size 25 mm

belt width

Article category 9621

| <i>Designation</i> | <i>band width</i> | <i>∅</i> | <i>Designation</i> | <i>band width</i> | <i>∅</i> |
|--------------------|-------------------|----------|--------------------|-------------------|----------|
| SBS 25-32 | 25 | 32 | SBS 25-68 | 25 | 68 |
| SBS 25-34 | 25 | 34 | SBS 25-70 | 25 | 70 |
| SBS 25-36 | 25 | 36 | SBS 25-72 | 25 | 72 |
| SBS 25-38 | 25 | 38 | SBS 25-74 | 25 | 74 |
| SBS 25-40 | 25 | 40 | SBS 25-76 | 25 | 76 |
| SBS 25-42 | 25 | 42 | SBS 25-78 | 25 | 78 |
| SBS 25-44 | 25 | 44 | SBS 25-80 | 25 | 80 |
| SBS 25-46 | 25 | 46 | SBS 25-82 | 25 | 82 |
| SBS 25-48 | 25 | 48 | SBS 25-84 | 25 | 84 |
| SBS 25-50 | 25 | 50 | SBS 25-86 | 25 | 86 |
| SBS 25-52 | 25 | 52 | SBS 25-88 | 25 | 88 |
| SBS 25-54 | 25 | 54 | SBS 25-90 | 25 | 90 |
| SBS 25-56 | 25 | 56 | SBS 25-92 | 25 | 92 |
| SBS 25-58 | 25 | 58 | SBS 25-94 | 25 | 94 |
| SBS 25-60 | 25 | 60 | SBS 25-96 | 25 | 96 |
| SBS 25-62 | 25 | 62 | SBS 25-98 | 25 | 98 |
| SBS 25-64 | 25 | 64 | SBS 25-100 | 25 | 100 |
| SBS 25-66 | 25 | 66 | | | |

SBS 220

Gripping jaw

clamp with two screws size 20
mm belt width

Article category 9622



| <i>Designation</i> | <i>band width</i> | <i>∅</i> | <i>Designation</i> | <i>band width</i> | <i>∅</i> |
|--------------------|-------------------|----------|--------------------|-------------------|----------|
| SBS 220-42 | 20 | 42 | SBS 220-72 | 20 | 72 |
| SBS 220-44 | 20 | 44 | SBS 220-74 | 20 | 74 |
| SBS 220-46 | 20 | 46 | SBS 220-76 | 20 | 76 |
| SBS 220-48 | 20 | 48 | SBS 220-78 | 20 | 78 |
| SBS 220-50 | 20 | 50 | SBS 220-80 | 20 | 80 |
| SBS 220-52 | 20 | 52 | SBS 220-82 | 20 | 82 |
| SBS 220-54 | 20 | 54 | SBS 220-84 | 20 | 84 |
| SBS 220-56 | 20 | 56 | SBS 220-86 | 20 | 86 |
| SBS 220-58 | 20 | 58 | SBS 220-88 | 20 | 88 |
| SBS 220-60 | 20 | 60 | SBS 220-90 | 20 | 90 |
| SBS 220-62 | 20 | 62 | SBS 220-92 | 20 | 92 |
| SBS 220-64 | 20 | 64 | SBS 220-94 | 20 | 94 |
| SBS 220-66 | 20 | 66 | SBS 220-96 | 20 | 96 |
| SBS 220-68 | 20 | 68 | SBS 220-98 | 20 | 98 |
| SBS 220-70 | 20 | 70 | SBS 220-100 | 20 | 100 |

SBS 225

Gripping jaw

clamp with two screws size 25
mm belt width

Article category 9622



| <i>Designation</i> | <i>band width</i> | <i>∅</i> | <i>Designation</i> | <i>band width</i> | <i>∅</i> |
|--------------------|-------------------|----------|--------------------|-------------------|----------|
| SBS 225-42 | 25 | 42 | SBS 225-72 | 25 | 72 |
| SBS 225-44 | 25 | 44 | SBS 225-74 | 25 | 74 |
| SBS 225-46 | 25 | 46 | SBS 225-76 | 25 | 76 |
| SBS 225-48 | 25 | 48 | SBS 225-78 | 25 | 78 |
| SBS 225-50 | 25 | 50 | SBS 225-80 | 25 | 80 |
| SBS 225-52 | 25 | 52 | SBS 225-82 | 25 | 82 |
| SBS 225-54 | 25 | 54 | SBS 225-84 | 25 | 84 |
| SBS 225-56 | 25 | 56 | SBS 225-86 | 25 | 86 |
| SBS 225-58 | 25 | 58 | SBS 225-88 | 25 | 88 |
| SBS 225-60 | 25 | 60 | SBS 225-90 | 25 | 90 |
| SBS 225-62 | 25 | 62 | SBS 225-92 | 25 | 92 |
| SBS 225-64 | 25 | 64 | SBS 225-94 | 25 | 94 |
| SBS 225-66 | 25 | 66 | SBS 225-96 | 25 | 96 |
| SBS 225-68 | 25 | 68 | SBS 225-98 | 25 | 98 |
| SBS 225-70 | 25 | 70 | SBS 225-100 | 25 | 100 |

1 OK

One ear clamp

for hose fastening within lower pressure range

material: steel, zincd and yellow chromatised, also stainless steel

Article category 9623



Designation

theoretical tension range

width

| | | |
|------------------|-----------|---|
| 1 OK 7,5-9,0-6 | 7,5-9,0 | 6 |
| 1 OK 8,1-9,5-6 | 8,1-9,5 | 6 |
| 1 OK 8,5-10,0-6 | 8,5-10,0 | 6 |
| 1 OK 9,1-10,5-6 | 9,1-10,5 | 6 |
| 1 OK 9,3-11,0-6 | 9,3-11,0 | 6 |
| 1 OK 9,6-11,3-6 | 9,6-11,3 | 6 |
| 1 OK 10,1-11,8-6 | 10,1-11,8 | 6 |
| 1 OK 10,1-12,0-6 | 10,1-12,0 | 6 |
| 1 OK 10,3-12,3-6 | 10,3-12,3 | 6 |
| 1 OK 10,8-12,8-6 | 10,8-12,8 | 6 |
| 1 OK 11,3-13,3-6 | 11,3-13,3 | 6 |
| 1 OK 11,8-13,8-6 | 11,8-13,8 | 6 |
| 1 OK 12,0-14,0-6 | 12,0-14,0 | 6 |
| 1 OK 12,5-14,5-6 | 12,5-14,5 | 6 |
| 1 OK 13,0-15,0-6 | 13,0-15,0 | 6 |
| 1 OK 13,5-15,5-6 | 13,5-15,5 | 6 |
| 1 OK 13,8-16,0-6 | 13,8-16,0 | 6 |
| 1 OK 14,0-16,5-6 | 14,0-16,5 | 6 |
| 1 OK 14,6-16,8-6 | 14,6-16,8 | 6 |
| 1 OK 15,3-17,5-6 | 15,3-17,5 | 6 |
| 1 OK 15,8-18,0-6 | 15,8-18,0 | 6 |
| 1 OK 16,3-18,5-6 | 16,3-18,5 | 6 |
| 1 OK 17,2-19,5-6 | 17,2-19,5 | 6 |

--->

1 OK

One ear clamp

for hose fastening within lower pressure range

material: steel, zincd and yellow chromatised, also stainless steel

Article category 9623



Designation

theoretical tension range

width

<---

| | | |
|------------------|-----------|---|
| 1 OK 17,7-20,0-7 | 17,7-20,0 | 7 |
| 1 OK 17,9-20,7-7 | 17,9-20,7 | 7 |
| 1 OK 18,7-21,0-7 | 18,7-21,0 | 7 |
| 1 OK 19,5-21,8-7 | 19,5-21,8 | 7 |
| 1 OK 19,9-22,5-7 | 19,9-22,5 | 7 |
| 1 OK 21,0-23,5-7 | 21,0-23,5 | 7 |
| 1 OK 21,7-24,5-7 | 21,7-24,5 | 7 |
| 1 OK 22,7-25,5-7 | 22,7-25,5 | 7 |
| 1 OK 23,6-26,3-7 | 23,6-26,3 | 7 |
| 1 OK 24,1-27,0-7 | 24,1-27,0 | 7 |
| 1 OK 27,2-30,7-7 | 27,2-30,7 | 7 |

1 OKE

One ear clamp

with pre-assembled spacer collar

material: clamp: steel, zincd and yellow chromatised

spacer collar: stainless steel

Article category 9625



Designation

theoretical tension range

width

| | | |
|-------------------|-----------|-----|
| 1 OKE 10,6-12,6-8 | 10,6-12,6 | 8,2 |
| 1 OKE 11,1-13,1-8 | 11,1-13,1 | 8,2 |
| 1 OKE 11,3-13,3-8 | 11,3-13,3 | 8,2 |
| 1 OKE 11,8-13,8-8 | 11,8-13,8 | 8,2 |
| 1 OKE 12,3-14,3-8 | 12,3-14,3 | 8,2 |
| 1 OKE 12,8-14,8-8 | 12,8-14,8 | 8,2 |
| 1 OKE 13,1-15,3-8 | 13,1-15,3 | 8,2 |
| 1 OKE 13,2-15,8-8 | 13,2-15,8 | 8,2 |
| 1 OKE 13,9-16,1-8 | 13,9-16,1 | 8,2 |
| 1 OKE 14,6-16,8-8 | 14,6-16,8 | 8,2 |
| 1 OKE 15,1-17,3-8 | 15,1-17,3 | 8,2 |
| 1 OKE 15,6-17,8-8 | 15,6-17,8 | 8,2 |
| 1 OKE 16,5-18,8-8 | 16,5-18,8 | 8,2 |

1 OKE

One ear clamp

with pre-assembled spacer collar
material: clamp: steel, zinc and
yellow chromatised
spacer collar: stainless steel
Article category 9625



Designation

theoretical tension range

width

| | | |
|-------------------|-----------|-----|
| 1 OKE 17,1-19,3-9 | 17,1-19,3 | 9,2 |
| 1 OKE 17,1-20,0-9 | 17,1-20,0 | 9,2 |
| 1 OKE 18,0-20,3-9 | 18,0-20,3 | 9,2 |
| 1 OKE 18,8-21,1-9 | 18,8-21,1 | 9,2 |
| 1 OKE 19,2-21,8-9 | 19,2-21,8 | 9,2 |
| 1 OKE 20,2-22,8-9 | 20,2-22,8 | 9,2 |
| 1 OKE 21,0-23,8-9 | 21,0-23,8 | 9,2 |
| 1 OKE 22,0-24,8-9 | 22,0-24,8 | 9,2 |
| 1 OKE 23,0-25,6-9 | 23,0-25,6 | 9,2 |
| 1 OKE 23,3-26,3-9 | 23,3-26,3 | 9,2 |
| 1 OKE 26,5-30,0-9 | 26,5-30,0 | 9,2 |

1 OK

One ear clamp

for hose fastening within lower pressure range

material: steel, zined and yellow chromatised

Article category 9623



Designation

theoretical tension range

width

1 OK 2,9-3,3-3

2,7-3,3

3

1 OK 3,0-3,5-3

3,0-3,5

3

1 OK

One ear clamp

for hose fastening within lower pressure range

material: steel, zincd and yellow chromatised

Article category 9623



Designation

theoretical tension range

width

1 OK 3,3-4,1-4

3,3-4,1

4

1 OK 4,1-5,1-4

4,1-5,1

4

1 OK 5,1-6,1-4

5,1-6,1

4

1 OK 5,6-6,6-4

5,6-6,6

4

1 OK

One ear clamp

for hose fastening within lower pressure range

material: steel, zincd and yellow chromatised

Article category 9623



Designation

theoretical tension range

width

1 OK 6,1-7,0-4

6,1-7,0

5

1 OK 6,5-7,5-5

6,5-7,5

5

1 OK 6,8-8,0-5

6,8-8,0

5

1 OK 7,1-8,3-5

7,1-8,3

5

1 OK 7,5-8,7-5

7,5-8,7

5

1 OKE

One ear clamp

with pre-assembled spacer collar
material: clamp: steel, zincd and
yellow chromatised
spacer collar: stainless steel
Article category 9625



Designation

theoretical tension range

width

| | | |
|-------------------|-----------|-----|
| 1 OKE 2,5-2,9-5 | 2,5-2,9 | 5,5 |
| 1 OKE 2,7-3,1-5 | 2,7-3,1 | 5,5 |
| 1 OKE 2,9-3,7-5 | 2,9-3,7 | 5,5 |
| 1 OKE 3,7-4,7-5 | 3,7-4,7 | 5,5 |
| 1 OKE 4,7-5,7-5 | 4,7-5,7 | 5,5 |
| 1 OKE 5,2-6,2-5 | 5,2-6,2 | 5,5 |
| 1 OKE 5,6-6,5-6 | 5,6-6,5 | 6,4 |
| 1 OKE 5,9-7,0-6 | 5,9-7,0 | 6,4 |
| 1 OKE 6,3-7,5-6 | 6,3-7,5 | 6,4 |
| 1 OKE 6,6-7,8-6 | 6,6-7,8 | 6,4 |
| 1 OKE 7,0-8,2-6 | 7,0-8,2 | 6,4 |
| 1 OKE 7,0-8,5-7 | 7,0-8,5 | 7,4 |
| 1 OKE 7,5-9,0-7 | 7,5-9,0 | 7,4 |
| 1 OKE 8,0-9,5-7 | 8,0-9,5 | 7,4 |
| 1 OKE 8,5-10,0-7 | 8,5-10,0 | 7,4 |
| 1 OKE 8,8-10,5-7 | 8,8-10,5 | 7,4 |
| 1 OKE 9,1-10,8-7 | 9,1-10,8 | 7,4 |
| 1 OKE 9,5-11,5-7 | 9,5-11,5 | 7,4 |
| 1 OKE 9,6-11,3-7 | 9,6-11,3 | 7,4 |
| 1 OKE 9,8-11,8-7 | 9,8-11,8 | 7,4 |
| 1 OKE 10,3-12,3-7 | 10,3-12,3 | 7,4 |

2 OK

Two ear clamp

for hose tightening within lower and medium pressure range, connections metal/ metal, strain relief

material: chrome and high polish galvanised steel

Article category 9627



Designation

tension range

material

| | | |
|------------|-------|------------------|
| 2 OK 5-7 | 5-7 | gelb chromatiert |
| 2 OK 7-9 | 7-9 | gelb chromatiert |
| 2 OK 9-11 | 9-11 | gelb chromatiert |
| 2 OK 11-13 | 11-13 | gelb chromatiert |
| 2 OK 13-15 | 13-15 | gelb chromatiert |
| 2 OK 15-18 | 15-18 | gelb chromatiert |
| 2 OK 17-20 | 17-20 | gelb chromatiert |
| 2 OK 20-23 | 20-23 | gelb chromatiert |
| 2 OK 22-25 | 22-25 | gelb chromatiert |
| 2 OK 23-27 | 23-27 | gelb chromatiert |
| 2 OK 25-28 | 25-28 | gelb chromatiert |
| 2 OK 28-31 | 28-31 | gelb chromatiert |
| 2 OK 31-34 | 31-34 | gelb chromatiert |
| 2 OK 34-37 | 34-37 | gelb chromatiert |
| 2 OK 37-40 | 37-40 | gelb chromatiert |
| 2 OK 40-43 | 40-43 | gelb chromatiert |
| 2 OK 43-46 | 43-46 | gelb chromatiert |

2 OK VC

Two ear clamp

for hose tightening within lower and medium pressure range, connections metal/ metal, strain relief

material: chrome and high polish galvanised steel

Article category 9628



Designation

theoretical tension range

width

| | | |
|-----------------|-----------|------|
| 2 OK 3-5 VC | 3,0-5,0 | 5,0 |
| 2 OK 3,1-4,1 VC | 3,1-4,1 | 3,5 |
| 2 OK 3,5-4,5 VC | 3,5-4,5 | 3,5 |
| 2 OK 5-7 VC | 5,0-7,0 | 6,0 |
| 2 OK 7-9 VC | 7,0-9,0 | 7,0 |
| 2 OK 8-11 VC | 8,0-11,0 | 7,0 |
| 2 OK 9-11 VC | 9,0-11,0 | 7,0 |
| 2 OK 11-13 VC | 11,0-13,0 | 7,0 |
| 2 OK 13-15 VC | 13,0-15,0 | 7,5 |
| 2 OK 15-17 VC | 15,0-17,0 | 8,0 |
| 2 OK 15-18 VC | 15,0-18,0 | 8,0 |
| 2 OK 16-19 VC | 16,0-19,0 | 8,0 |
| 2 OK 17-20 VC | 17,0-20,0 | 8,5 |
| 2 OK 19-22 VC | 19,0-22,0 | 9,0 |
| 2 OK 20-23 VC | 20,0-23,0 | 9,0 |
| 2 OK 22-25 VC | 22,0-25,0 | 10,0 |
| 2 OK 23-25 VC | 23,0-25,0 | 10,0 |
| 2 OK 23-27 VC | 23,0-27,0 | 10,0 |
| 2 OK 25-28 VC | 25,0-28,0 | 10,0 |
| 2 OK 27-31 VC | 27,0-31,0 | 10,0 |
| 2 OK 28-31 VC | 28,0-31,0 | 10,0 |
| 2 OK 31-34 VC | 31,0-34,0 | 10,0 |
| 2 OK 34-37 VC | 34,0-37,0 | 10,0 |

--->

2 OK VC

Two ear clamp

for hose tightening within lower and medium pressure range, connections metal/ metal, strain relief

material: chrome and high polish galvanised steel

Article category 9628



Designation

theoretical tension range

width

<---

| | | |
|---------------|-----------|------|
| 2 OK 37-40 VC | 37,0-40,0 | 10,0 |
| 2 OK 40-43 VC | 40,0-43,0 | 10,0 |
| 2 OK 43-46 VC | 43,0-46,0 | 10,0 |

2 OKO VC

Oval two ear clamps

to loop on cables and rope, strain relief, connection of cylindrical parts

material: chrome and high polish galvanised steel

Article category 9630



Designation

theoretical tension range

width

| | | |
|--------------------|-----------|-----|
| 2 OKO 4,4-6,8 VC | 4,4-6,8 | 5,0 |
| 2 OKO 11-14,5 VC | 11,0-14,5 | 7,0 |
| 2 OKO 12,5-16,5 VC | 12,5-16,5 | 7,0 |
| 2 OKO 14,5-20,5 VC | 14,0-18,5 | 7,5 |
| 2 OKO 14-18,5 VC | 14,5-20,5 | 8,0 |

OKD VC

Double hose clamps

for the parallel guide of hoses, eg
welding hoses and cables

Article category 9631

Designation

theoretical tension range

width

| | | |
|--------------|-------|------|
| OKD 4-5 VC | 4-5 | 6,0 |
| OKD 6-7 VC | 6-7 | 6,0 |
| OKD 8-9 VC | 8-9 | 7,0 |
| OKD 10-11 VC | 10-11 | 8,0 |
| OKD 12-13 VC | 12-13 | 8,5 |
| OKD 14-15 VC | 14-15 | 9,0 |
| OKD 16-17 VC | 16-17 | 10,0 |
| OKD 18-19 VC | 18-19 | 10,0 |
| OKD 20-21 VC | 20-21 | 10,0 |
| OKD 22-23 VC | 22-23 | 10,0 |

CLIC

Hose clamps

Article category 9632



Designation

tension range

| | |
|----------------|-----------|
| CLIC 7,5-9 | 7,5-9,0 |
| CLIC 8,5-10 | 8,5-10,0 |
| CLIC 9,5-11 | 9,5-11,0 |
| CLIC 10,5-12 | 10,5-12,0 |
| CLIC 11,5-12,5 | 11,5-12,5 |
| CLIC 11-12,5 | 11,0-12,5 |
| CLIC 12,5-13,5 | 12,5-13,5 |
| CLIC 12-13 | 12,0-13,0 |
| CLIC 13,5-14,5 | 13,5-14,5 |
| CLIC 13-14 | 13,0-14,0 |
| CLIC 14,5-15,5 | 13,5-14,5 |
| CLIC 14-15 | 14,0-15,0 |
| CLIC 15,5-16,5 | 15,5-16,5 |
| CLIC 15-16 | 15,0-16,0 |
| CLIC 16,5-17,5 | 16,5-17,5 |
| CLIC 16-17 | 16,0-17,0 |
| CLIC 17,5-18,5 | 17,5-18,5 |
| CLIC 17-18 | 17,0-18,0 |
| CLIC 18-19 | 18,0-19,0 |
| CLIC 19-20 | 19,0-20,0 |
| CLIC 20,5-21,5 | 20,5-21,5 |
| CLIC 20-21 | 20,0-21,0 |
| CLIC 21,5-23 | 21,5-23,0 |

--->

CLIC

Hose clamps

Article category 9632



Designation

tension range

<---

| | |
|--------------|-----------|
| CLIC 21-22,5 | 21,0-22,5 |
| CLIC 22,5-24 | 22,5-24,0 |
| CLIC 22-23,5 | 22,0-23,5 |
| CLIC 23,5-25 | 23,5-25,0 |
| CLIC 24-25,5 | 24,0-25,5 |
| CLIC 25,5-27 | 25,5-27,0 |
| CLIC 25-26,5 | 25,0-26,5 |
| CLIC 26,5-28 | 26,5-28,0 |
| CLIC 27,5-29 | 27,5-29,0 |
| CLIC 28,5-30 | 28,5-30,0 |
| CLIC 28-29,5 | 28,0-29,5 |

CLIC SET

Set of clamps in plastic case

content: 200 clamps

Article category 9632

Designation

CLIC SET

BL KG AL

Blank caps

Article category 9670



Designation

cog space

material

| | | |
|--------------|-----|-----------|
| BL KG 44 AL | 44 | Aluminium |
| BL KG 52 AL | 52 | Aluminium |
| BL KG 81 AL | 81 | Aluminium |
| BL KG 105 AL | 105 | Aluminium |
| BL KG 115 AL | 115 | Aluminium |
| BL KG 148 AL | 148 | Aluminium |
| BL KG 160 AL | 160 | Aluminium |
| BL KG 188 AL | 188 | Aluminium |
| BL KG 220 AL | 220 | Aluminium |

BL KG A-D AL

Blank caps

Article category 9670



Designation

cog space

material

BL KG 31 D AL

31

Aluminium

BL KG 66 C AL

66

Aluminium

BL KG 89 B AL

89

Aluminium

BL KG 133 A AL

133

Aluminium

BL KG MG

Blank caps, brass

Article category 9670



Designation

cog space

material

| | | |
|--------------|-----|---------|
| BL KG 44 MG | 44 | Messing |
| BL KG 52 MG | 52 | Messing |
| BL KG 81 MG | 81 | Messing |
| BL KG 105 MG | 105 | Messing |
| BL KG 115 MG | 115 | Messing |
| BL KG 148 MG | 148 | Messing |

BL KG A-D MG

Blank caps, brass

Article category 9670,



Designation

cog space

material

BL KG 31 D MG

31

Messing

BL KG 66 C MG

66

Messing

BL KG 89 B MG

89

Messing

BL KG 133 A MG

133

Messing

VB KG AL

Adapter for fire fighting fittings

Article category 9671



Designation

cog space

| | |
|--------------------|---------|
| VB KG 133-66 AC AL | 133/66 |
| VB KG 133-89 AB AL | 133/89 |
| VB KG 89-66 BC AL | 89/66 |
| VB KG 66-31 CD AL | 66/31 |
| VB KG 66-44 AL | 66/44 |
| VB KG 66-52 AL | 66/52 |
| VB KG 81-52 AL | 81/52 |
| VB KG 81-66 AL | 81/66 |
| VB KG 89-81 AL | 89/81 |
| VB KG 105-89 AL | 105/89 |
| VB KG 115-105 AL | 115/105 |
| VB KG 115-89 AL | 115/89 |
| VB KG 133-105 AL | 133/105 |
| VB KG 133-115 AL | 133/115 |
| VB KG 148-115 AL | 148/115 |
| VB KG 148-133 AL | 148/133 |
| VB KG 160-133 AL | 160/133 |
| VB KG 160-148 AL | 160/148 |
| VB KG 188-133 AL | 188/133 |
| VB KG 188-160 AL | 188/160 |
| VB KG 220-188 AL | 220/188 |

VB KG MG

Adapter for fire fighting fittings

Article category 9671



Designation

cog space

| | |
|--------------------|--------|
| VB KG 66-31 CD MG | 66/31 |
| VB KG 89-66 BC MG | 89/66 |
| VB KG 133-89 AB MG | 133/89 |

SD KG N

Suction seal

Material: nitrile

Article category 9674



Designation

for hose bore

cog space

| | | |
|---------------|-----|-----|
| SD KG 44 N | 32 | 44 |
| SD KG 52 N | 38 | 52 |
| SD KG 81 N | 65 | 81 |
| SD KG 105 N | 90 | 105 |
| SD KG 115 N | 100 | 115 |
| SD KG 148 N | 125 | 148 |
| SD KG 160 N | 150 | 160 |
| SD KG 188 N | 165 | 188 |
| SD KG 133 A N | 110 | 133 |
| SD KG 89 B N | 75 | 89 |
| SD KG 66 C N | 52 | 66 |
| SD KG 31 D N | 25 | 31 |

SD KG S

Suction seal

material: silicone

Article category 9674



Bezeichnung

for hose bore

cog space

| | | |
|-------------|-----|-----|
| SD KG 52 S | 38 | 52 |
| SD KG 81 S | 65 | 81 |
| SD KG 115 S | 100 | 115 |
| SD KG 160 S | 150 | 160 |

SD KG V

Suction seal

material: viton

Article category 9674



Designation

for hose bore

cog space

| | | |
|-------------|-----|-----|
| SD KG 81 V | 65 | 81 |
| SD KG 115 V | 115 | 115 |
| SD KG 148 V | 125 | 148 |
| SD KG 160 V | 150 | 160 |

SD KG A-D S

Suction seal

material: silicone

Article category 9674



Designation

for hose bore

cog space

| | | |
|---------------|-----|-----|
| SD KG 133 A S | 110 | 133 |
| SD KG 89 B S | 75 | 89 |
| SD KG 66 C S | 52 | 66 |
| SD KG 31 D S | 25 | 31 |

SD KG A-D V

Suction seal

material: viton

Article category 9674



Designation

for hose bore

cog space

| | | |
|---------------|-----|-----|
| SD KG 133 A V | 110 | 133 |
| SD KG 89 B V | 75 | 89 |
| SD KG 66 C V | 52 | 66 |
| SD KG 31 D V | 25 | 31 |

DD KG

Sealing for delivery

N = nitrile

S = silicone

V = viton

Article category 9675



Designation

for hose bore

cog space

| | | |
|--------------|-----|-----|
| DD KG 81 N | 65 | 81 |
| DD KG 115 N | 100 | 115 |
| DD KG 89 B N | 75 | 89 |
| DD KG 89 B S | 75 | 89 |
| DD KG 89 B V | 75 | 89 |
| DD KG 66 C N | 52 | 66 |
| DD KG 66 C S | 52 | 66 |
| DD KG 66 C V | 52 | 66 |

FLD R N

Gasket

material: nitrile

Article category 9677



Designation

Storz

material

| | | |
|---------------|-----------------------|---------------|
| FLD R 1/2 N | k.A. | Gummi schwarz |
| FLD R 3/4 N | k.A. | Gummi schwarz |
| FLD R 1 N | R 1" d = 33/20x3 | Gummi schwarz |
| FLD R 1 1/2 N | R 1"1/2 d = 48/39x3 | Gummi schwarz |
| FLD R 1 1/4 N | R 1"1/4 d = 42/33x3 | Gummi schwarz |
| FLD R 2 N | R 2" d = 60/47x3 | Gummi schwarz |
| FLD R 2 1/2 N | R 2"1/2 d = 76/66x3 | Gummi schwarz |
| FLD R 3 N | R 3" d = 88/76x3 | Gummi schwarz |
| FLD R 4 N | R 4" d = 113/102x3 | Gummi schwarz |
| FLD R 4 1/2 N | R 4"1/2 d = 126/105x3 | Gummi schwarz |
| FLD R 5 N | R 5" d = 140/122x4 | Gummi schwarz |

FLD R N W

Gasket

material: nitrile, white

Article category 9677



Designation

Storz

material

| | | |
|-----------------|-----------------------|-------------|
| FLD R 1 N W | R1" d = 33/20x3 | Gummi weiss |
| FLD R 1 1/4 NW | R 1"1/4 d = 42/33x3 | Gummi weiss |
| FLD R 1 1/2 N W | R 1"1/2 d = 48/39x3 | Gummi weiss |
| FLD R 2 N W | R 2" d = 60/47x3 | Gummi weiss |
| FLD R 2 1/2 N W | R 2"1/2 d = 76/66x3 | Gummi weiss |
| FLD R 3 N W | R 3" d = 88/76x3 | Gummi weiss |
| FLD R 4 N W | R 4" d = 113/102x3 | Gummi weiss |
| FLD R 4 1/2 N W | R 4"1/2 d = 126/105x3 | Gummi weiss |
| FLD R 5 N W | R 5" d = 140/122x4 | Gummi weiss |

FLD R T

Gasket

material: teflon

Article category 9677



Designation

Storz

material

| | | |
|---------------|-----------------------|-------------|
| FLD R 1 T | R 1" d = 33/20x3 | Teflon PTFE |
| FLD R 1 1/4 T | R 1"1/4 d = 42/33x3 | Teflon PTFE |
| FLD R 1 1/2 T | R 1"1/2 d = 48/39x3 | Teflon PTFE |
| FLD R 2 T | R 2" d = 60/47x3 | Teflon PTFE |
| FLD R 2 1/2 T | R 2"1/2 d = 76/66x3 | Teflon PTFE |
| FLD R 3 T | R 3" d = 88/76x3 | Teflon PTFE |
| FLD R 4 T | R 4" d = 113/102x3 | Teflon PTFE |
| FLD R 4 1/2 T | R 4"1/2 d = 126/105x3 | Teflon PTFE |
| FLD R 5 T | R5" d = 140/122 x4 | Teflon PTFE |

AN

Lock Fluid

Article category 9701



Designation

thread dimension

temperature range

DVGW approval

AN 305-42

bis R 3/4" (bis M 20)

-55 bis +150°C

ja

AN 305-72

R 3/4" bis R 3" (M 80)

-55 bis +150°C

nein

REINIGER

Detergent

removes oil and fat, dries quickly
and does not leave traces

ingredients: acetone, FCKW-free

Article category 9701



Designation

bundle

content (ml)

REINIGER 706

SD

400

TF BAND

PTFE sealing strip

Article category 9701



Designation

TF BAND

STAHLBOX F

Tool box, steel

Article category 9702



Designation

STAHLBOX 12 F

STAHLBOX 16 F

MENGENTEILER M

Flow divider

Article category 9704



Designation

operating pressure (bar)

MENGENTEILER M 16

bis 250

MENGENTEILER M 18

bis 250

T M

Threaded nozzle

with female cone 60°

Article category 9705



| <i>Designation</i> | <i>thread</i> | <i>hose ID (mm)</i> | <i>wrench size (mm)</i> |
|--------------------|---------------|---------------------|-------------------------|
| T 184 M | G 1/8" | 4 | 14 |
| T 186 M | G 1/8" | 6 | 14 |
| T 189 M | G 1/8" | 9 | 14 |
| T 144 M | G 1/4" | 4 | 17 |
| T 146 M | G 1/4" | 6 | 17 |
| T 149 M | G 1/4" | 9 | 17 |
| T 1413 M | G 1/4" | 13 | 19 |
| T 386 M | G 3/8" | 6 | 19 |
| T 389 M | G 3/8" | 9 | 19 |
| T 3813 M | G 3/8" | 13 | 19 |
| T 126 M | G 1/2" | 6 | 24 |
| T 129 M | G 1/2" | 9 | 24 |
| T 1213 M | G 1/2" | 13 | 24 |
| T 1219 M | G 1/2" | 19 | 24 |
| T 349 M | G 3/4" | 9 | 27 |
| T 3413 M | G 3/4" | 13 | 27 |
| T 3419 M | G 3/4" | 19 | 27 |
| T 1025 M | G 1" | 25 | 38 |

BOE ABLASS

Drain plug

Article category 9707



Designation

valve (thread)

suitable connection piece

BOE ABLASS 2

Anschlußstück

M 22x1,5

BOE ABLASS 3

Anschlußstück

M 26x1,5

BOE ABLASS 90

Drain plug

Article category 9707



Designation

valve (thread)

suitable connection piece

BOE ABLASS 2-90

Anschlußstück

M 22x1,5

BOE ABLASS 3-90

Anschlußstück

M 26x1,5

BOE

Drain plug

Article category 9708



Designation

valve (thread)

suitable connection piece

material

| | | | |
|-------------|-----------|------|---------|
| BOE 12-1,5 | M 12x1,5 | M 22 | Stahl |
| BOE 14-1,5 | M 14x1,5 | M 22 | Stahl |
| BOE 16-1,5 | M 16x1,5 | M 22 | Stahl |
| BOE 18-1,5 | M 18x1,5 | M 26 | Stahl |
| BOE 20-1,5 | M 20x1,5 | M 26 | Stahl |
| BOE 20-1,75 | M 20x1,75 | M 26 | Stahl |
| BOE 21-1,75 | M 21x1,75 | M 26 | Stahl |
| BOE 22-1,5 | M 22x1,5 | M 26 | Stahl |
| BOE 22-1,75 | M 22x1,75 | M 26 | Stahl |
| BOE 24-1,5 | M 24x1,5 | M 26 | Messing |
| BOE 24-2 | M 24x2 | M 26 | Messing |
| BOE 26-1,5 | M 26x1,5 | M 26 | Messing |
| BOE 30-1,5 | M 30x1,5 | M 26 | Messing |
| BOE 30-2 | M 30x2 | M 26 | Messing |
| BOE 32-1,5 | M 32x1,5 | M 26 | Messing |
| BOE 36-1,5 | M 36x1,5 | M 26 | Messing |
| BOE 36-2 | M 36x2 | M 26 | Messing |
| BOE 38-1,5 | M 38x1,5 | M 26 | Messing |

BOE R

Drain plug

Article category 9709



Designation

valve (thread)

suitable connection piece

material

| | | | |
|-------------|---------|------|---------|
| BOE R 1/4 | G 1/4" | M 22 | Stahl |
| BOE R 3/8 | G 3/8" | M 22 | Stahl |
| BOE R 1/2 | G 1/2" | M 26 | Stahl |
| BOE R 5/8 | G 5/8" | M 26 | Stahl |
| BOE R 3/4 | G 3/4" | M 26 | Messing |
| BOE R 7/8 | G 7/8" | M 26 | Messing |
| BOE R 1 | G 1" | M 26 | Messing |
| BOE R 1 1/2 | G 1"1/2 | M 26 | Messing |
| BOE R 1 1/4 | G 1"1/4 | M 26 | Messing |

BOE U

Drain plug

Article category 9710



Designation

valve (thread)

suitable connection piece

material

| | | | |
|-----------------|---------------|------|---------|
| BOE U 1-12 | 1"-12 UNF | M 26 | Messing |
| BOE U 1 1/16-12 | 1"1/16-12 UNF | M 26 | Messing |
| BOE U 1 1/8-12 | 1"1/8-12 UNF | M 26 | Messing |
| BOE U 1 1/2-12 | 1"1/2-12 UNF | M 26 | Messing |
| BOE U 1/2-20 | 1/2"-20 UNF | M 22 | Stahl |
| BOE U 5/8-18 | 5/8"-18 UNF | M 22 | Stahl |
| BOE U 3/4-16 | 3/4"-16 UNF | M 26 | Stahl |
| BOE U 7/8-14 | 7/8"-14 UNF | M 26 | Stahl |

BOE DICHTSCHEIBE

Sealing disc

Article category 9711



Designation

article

dimension

BOE DICHTSCHEIBE 2

Schutzkappen-Dichtscheibe

M 22

BOE DICHTSCHEIBE 3

Schutzkappen-Dichtscheibe

M 26

BOE KAPPE MDK

Cap for drain plug

Article category 9711

Designation

article

dimension

BOE KAPPE 2 MDK

Schutzkappe mit Dichtung und Kappe

M 22

BOE KAPPE 3 MDK

Schutzkappe mit Dichtung und Kappe

M 26

BOE KAPPE MDOK

Cap for drain plug

Article category 9711

Designation

article

dimension

BOE KAPPE 2 MDOK

Schutzkappe mit Dichtung und Kappe

M 22

BOE KAPPE 3 MDOK

Schutzkappe mit Dichtung und Kappe

M 26

SK KG AL

Suction coupling

Article category 9667



Designation

for hose bore

cog space

| | | |
|---------------------|-----|-----|
| SK KG 44 NW 19 AL | 19 | 44 |
| SK KG 44 NW 32 AL | 32 | 44 |
| SK KG 44 NW 25 AL | 25 | 44 |
| SK KG 52 NW 25 AL | 25 | 52 |
| SK KG 52 NW 32 AL | 32 | 52 |
| SK KG 52 NW 38 AL | 38 | 52 |
| SK KG 81 NW 65 AL | 65 | 81 |
| SK KG 81 NW 38 AL | 38 | 81 |
| SK KG 81 NW 52 AL | 52 | 81 |
| SK KG 81 NW 75 AL | 75 | 81 |
| SK KG 81 NW 70 AL | 70 | 81 |
| SK KG 105 NW 75 AL | 75 | 105 |
| SK KG 105 NW 90 AL | 90 | 105 |
| SK KG 115 NW 100 AL | 100 | 115 |
| SK KG 148 NW 125 AL | 125 | 148 |
| SK KG 160 NW 150 AL | 150 | 159 |
| SK KG 188 NW 150 AL | 150 | 188 |
| SK KG 188 NW 160 AL | 160 | 188 |
| SK KG 220 NW 205 AL | 205 | 220 |

SK KG A AL

Suction coupling

Article category 9667



Designation

for hose bore

cog space

| | | |
|-----------------------|-----|-----|
| SK KG 133 NW 90 A AL | 90 | 133 |
| SK KG 133 NW 100 A AL | 100 | 133 |
| SK KG 133 NW 110 A AL | 110 | 133 |
| SK KG 133 NW 125 A AL | 125 | 133 |

SK KG A MG

Suction coupling

Article category 9667



Designation

for hose bore

cog space

SK KG 133 NW 110 A MG

110

133

SK KG D AL

Suction coupling

Article category 9667



Designation

for hose bore

cog space

| | | |
|---------------------|----|----|
| SK KG 31 NW 13 D AL | 13 | 31 |
| SK KG 31 NW 15 D AL | 15 | 31 |
| SK KG 31 NW 19 D AL | 19 | 31 |
| SK KG 31 NW 25 D AL | 25 | 31 |

SK KG D MG

Suction coupling

Article category 9667



Designation

for hose bore

cog space

SK KG 31 NW 25 D MG

15

31

SK KG C AL

Suction coupling

Article category 9667



Designation

for hose bore

cog space

| | | |
|---------------------|----|----|
| SK KG 66 NW 25 C AL | 25 | 66 |
| SK KG 66 NW 32 C AL | 32 | 66 |
| SK KG 66 NW 38 C AL | 38 | 66 |
| SK KG 66 NW 42 C AL | 42 | 66 |
| SK KG 66 NW 50 C AL | 50 | 66 |
| SK KG 66 NW 52 C AL | 52 | 66 |
| SK KG 66 NW 19 C AL | 19 | 66 |
| SK KG 66 NW 28 C AL | 28 | 66 |
| SK KG 66 NW 40 C AL | 40 | 66 |
| SK KG 66 NW 45 C AL | 45 | 66 |
| SK KG 66 NW 55 C AL | 55 | 66 |
| SK KG 66 NW 60 C AL | 60 | 66 |

SK KG C MG

Suction coupling

Article category 9667



Designation

for hose bore

cog space

SK KG 66 NW 52 C MG

52

66

SK KG B AL

Suction coupling

Article category 9667



Designation

for hose bore

cog space

| | | |
|---------------------|----|----|
| SK KG 89 NW 52 B AL | 52 | 89 |
| SK KG 89 NW 65 B AL | 65 | 89 |
| SK KG 89 NW 70 B AL | 70 | 89 |
| SK KG 89 NW 75 B AL | 75 | 89 |
| SK KG 89 NW 80 B AL | 80 | 89 |

SK KG B MG

Suction coupling

Article category 9667



Designation

for hose bore

cog space

SK KG 89 NW 75 B MG

75

89

FK KG HR AL

Coupling with male thread

Article category 9669



Designation

male thread

cog space

| | | |
|-----------------------|---------|-----|
| FK KG 44 HR 25 AL | G 1" | 44 |
| FK KG 44 HR 32 AL | G 1"1/4 | 44 |
| FK KG 52 HR 32 AL | G 1"1/4 | 52 |
| FK KG 52 HR 40 AL | G 1"1/2 | 52 |
| FK KG 81 HR 40 AL | G 1"1/2 | 81 |
| FK KG 52 HR 50 AL | G 2" | 52 |
| FK KG 81 HR 50 AL | G 2" | 81 |
| FK KG 81 HR 65 AL | G 2"1/2 | 81 |
| FK KG 81 HR 75 AL | G 3" | 81 |
| FK KG 105 HR 75 AL | G 3" | 105 |
| FK KG 115 HR 100 AL | G 4" | 115 |
| FK KG 133 HR 100 A AL | G 4" | 133 |
| FK KG 160 HR 150 AL | G 6" | 160 |

FK KG HR B-D AL

Coupling with male thread

Article category 9669



Designation

male thread

cog space

| | | |
|---------------------|---------|----|
| FK KG 89 HR 50 B AL | G 2" | 89 |
| FK KG 89 HR 65 B AL | G 2"1/2 | 89 |
| FK KG 89 HR 75 B AL | G 3" | 89 |
| FK KG 66 HR 25 C AL | G 1" | 66 |
| FK KG 66 HR 32 C AL | G 1"1/4 | 66 |
| FK KG 66 HR 40 C AL | G 1"1/2 | 66 |
| FK KG 66 HR 50 C AL | G 2" | 66 |
| FK KG 66 HR 65 C AL | G 2"1/2 | 66 |
| FK KG 31 HR 20 D AL | G 3/4" | 31 |
| FK KG 31 HR 25 D AL | G 1" | 31 |
| FK KG 31 HR 32 D AL | G 1"1/4 | 31 |

FK KG HR A-D MG

Coupling with male thread

Article category 9669



Designation

male thread

cog space

| | | |
|-----------------------|---------|-----|
| FK KG 133 HR 100 A MG | G 4" | 133 |
| FK KG 89 HR 50 B MG | G 2" | 89 |
| FK KG 89 HR 65 B MG | G 2"1/2 | 89 |
| FK KG 89 HR 75 B MG | G 3" | 89 |
| FK KG 66 HR 25 C MG | G 1" | 66 |
| FK KG 66 HR 32 C MG | G 1"1/4 | 66 |
| FK KG 66 HR 40 C MG | G 1"1/2 | 66 |
| FK KG 66 HR 50 C MG | G 2" | 66 |
| FK KG 66 HR 65 C MG | G 2"1/2 | 66 |
| FK KG 31 HR 20 D MG | G 3/4" | 31 |
| FK KG 31 HR 25 D MG | G 3/4" | 31 |

FK KG HR MG

Coupling with male thread

Article category 9669



Designation

male thread

cog space

| | | |
|-------------------|---------|----|
| FK KG 44 HR 25 MG | G 1" | 44 |
| FK KG 44 HR 32 MG | G 1"1/4 | 44 |
| FK KG 52 HR 32 MG | G 1"1/4 | 52 |
| FK KG 52 HR 40 MG | G 1"1/2 | 52 |
| FK KG 81 HR 50 MG | G 2" | 81 |
| FK KG 81 HR 65 MG | G 2"1/2 | 81 |
| FK KG 81 HR 75 MG | G 3" | 81 |

FK KG IR AL

Festkupplung

Article category 9668



Designation

female thread

cog space

| | | |
|---------------------|-------|-----|
| FK KG 44 IR 25 AL | 1" | 44 |
| FK KG 44 IR 32 AL | 1"1/4 | 44 |
| FK KG 52 IR 25 AL | 1" | 52 |
| FK KG 52 IR 32 AL | 1"1/4 | 52 |
| FK KG 52 IR 40 AL | 1"1/2 | 52 |
| FK KG 52 IR 50 AL | 2" | 52 |
| FK KG 81 IR 40 AL | 1"1/2 | 81 |
| FK KG 81 IR 50 AL | 2" | 81 |
| FK KG 81 IR 65 AL | 2"1/2 | 81 |
| FK KG 81 IR 75 AL | 3" | 81 |
| FK KG 105 IR 75 AL | 3" | 105 |
| FK KG 115 IR 100 AL | 4" | 115 |
| FK KG 148 IR 125 AL | 5" | 148 |
| FK KG 160 IR 150 AL | 6" | 160 |
| FK KG 188 IR 150 AL | 6" | 188 |
| FK KG 188 IR 175 AL | 7" | 188 |
| FK KG 220 IR 200 AL | 8" | 220 |
| FK KG 278 IR 250 AL | 10" | 278 |

FK KG IR A AL

Coupling with female thread

Article category 9668



Designation

female thread

cog space

| | | |
|-----------------------|-------|-----|
| FK KG 133 IR 75 A AL | 3" | 133 |
| FK KG 133 IR 100 A AL | 4" | 133 |
| FK KG 133 IR 110 A AL | 4"1/2 | 133 |
| FK KG 133 IR 125 A AL | 5" | 133 |

FK KG IR A MG

Coupling with female thread

Article category 9668



Designation

female thread

cog space

FK KG 133 IR 100 A MG

4"

133

FK KG 133 IR 110 A MG

4"1/2

133

FK KG IR D AL

Coupling with female thread

Article category 9668



Designation

female thread

cog space

FK KG 31 IR 13 D AL

1/2"

31

FK KG 31 IR 20 D AL

3/4"

31

FK KG 31 IR 25 D AL

1"

31

FK KG 31 IR 32 D AL

1"1/4

31

FK KG IR D MG

Coupling with female thread

Article category 9668



Designation

female thread

cog space

FK KG 31 IR 13 D MG

1/2"

31

FK KG 31 IR 20 D MG

3/4"

31

FK KG 31 IR 25 D MG

1"

31

FK KG IR C AL

Coupling with female thread

Article category 9668



Designation

female thread

cog space

| | | |
|---------------------|-------|----|
| FK KG 66 IR 20 C AL | 3/4" | 66 |
| FK KG 66 IR 25 C AL | 1" | 66 |
| FK KG 66 IR 32 C AL | 1"1/4 | 66 |
| FK KG 66 IR 40 C AL | 1"1/2 | 66 |
| FK KG 66 IR 50 C AL | 2" | 66 |
| FK KG 66 IR 65 C AL | 2"1/2 | 66 |

FK KG IR C MG

Coupling with female thread

Article category 9668



Designation

female thread

cog space

| | | |
|---------------------|-------|----|
| FK KG 66 IR 25 C MG | 1" | 66 |
| FK KG 66 IR 32 C MG | 1"1/4 | 66 |
| FK KG 66 IR 40 C MG | 1"1/2 | 66 |
| FK KG 66 IR 50 C MG | 2" | 66 |
| FK KG 66 IR 65 C MG | 2"1/2 | 66 |

FK KG IR MG

Coupling with female thread

Article category 9668



Designation

female thread

cog space

FK KG 81 IR 50 MG

2"

81

FK KG 81 IR 65 MG

2"1/2

81

FK KG 81 IR 75 MG

3"

81

FK KG IR B AL

Coupling with female thread

Article category 9668



Designation

female thread

cog space

FK KG 89 IR 50 B AL

2"

89

FK KG 89 IR 65 B AL

2"1/2

89

FK KG 89 IR 75 B AL

3"

89

FK KG IR B MG

Coupling with female thread

Article category 9668



Designation

female thread

cog space

FK KG 89 IR 50 B MG

2"

89

FK KG 89 IR 65 B MG

2"1/2

89

FK KG 89 IR 75 B MG

4"

115

KPS

Coupling spanner

Article category 9673



Designation

type

material

| | | |
|------------|-------|----------------------------|
| KPS ABC ST | A B C | Temperguß (GTW) oder Stahl |
| KPS ABC TG | A B C | Temperguß |
| KPS BC ST | B C | Stahl |
| KPS BC TG | B C | Temperguß (GTW) oder Stahl |

DSD KG N

Pressure/ suction seal

material: Nitril

Article category 9676



Designation

nominal size

material

cog space

| | | | |
|----------------|---|-----------|-----|
| DSD KG 44 N | | NBR/weiss | 44 |
| DSD KG 52 N | | NBR/weiss | 52 |
| DSD KG 81 N | | NBR/weiss | 81 |
| DSD KG 115 N | | NBR/weiss | 115 |
| DSD KG 105 N | | NBR/weiss | 105 |
| DSD KG 148 N | | NBR/weiss | 125 |
| DSD KG 133 A N | A | NBR/weiss | 133 |
| DSD KG 89 B N | B | NBR/weiss | 89 |
| DSD KG 66 C N | C | NBR/weiss | 66 |
| DSD KG 31 D N | D | NBR/weiss | 31 |

DSD KG S

Pressure/ suction seal

material: silicone

Article category 9676



Designation

nominal size

Material

cog space

| | | | |
|----------------|---|---------------------|-----|
| DSD KG 133 A S | A | Silikon/transparent | 133 |
| DSD KG 89 B S | B | Silikon/transparent | 89 |
| DSD KG 66 C S | C | Silikon/transparent | 66 |
| DSD KG 31 D S | D | Silikon | 31 |

DSD KG V

Pressure/ suction seal

material: viton

Article category 9676



Designation

nominal size

cog space

material

| | | | |
|----------------|---|----|-------|
| DSD KG 133 A V | A | 33 | Viton |
| DSD KG 89 B V | B | 89 | Viton |
| DSD KG 66 C V | C | 66 | Viton |
| DSD KG 31 D V | D | 31 | Viton |

MST AL

Steel tube

Article category 9678

Designation

nominal size

cog space

Bohrung

MST NW 19 AL

G

19

19 mm-Tülle

MST NW 25 AL

25

25 mm-Tülle

MST KG AL

Steel tube

Article category 9678

Designation

nominal size

cog space

Eingang

| | | | |
|----------------|---|----|----------------|
| MST KG 89 B AL | B | 81 | 12x9 |
| MST KG 66 C AL | C | 66 | 12x9 |
| MST KG 31 D AL | D | 31 | D-Festkupplung |

Index

1

| | |
|-------|-------|
| 1 OK | 31-32 |
| 1 OK | 35-37 |
| 1 OKE | 33-34 |

2

| | |
|----------|-------|
| 2 OK | 39 |
| 2 OKO VC | 42 |
| 2 OK VC | 40-41 |

A

| | |
|------------------------------------|-------|
| Adapter for fire fighting fittings | 51-52 |
| AN | 62 |
| ASK | 5-6 |
| ASK M | 20 |
| ASK SET | 7 |

B

| | |
|-------------------|-------|
| Blank caps | 47-48 |
| Blank caps, brass | 49-50 |
| BL KG A-D AL | 48 |
| BL KG A-D MG | 50 |
| BL KG AL | 47 |
| BL KG MG | 49 |
| BOE | 70 |
| BOE ABLASS | 68 |
| BOE ABLASS 90 | 69 |

| | |
|------------------|----|
| BOE DICHTSCHEIBE | 73 |
| BOE KAPPE MDK | 74 |
| BOE KAPPE MDOK | 75 |
| BOE R | 71 |
| BOE U | 72 |

C

| | |
|-----------------------------|-------|
| Cap for drain plug | 74-75 |
| CLIC | 44-45 |
| CLIC SET | 46 |
| Copper ring set | 4 |
| Coupling spanner | 99 |
| Coupling with female thread | 90-98 |
| Coupling with male thread | 85-88 |
| CR SET | 4 |

D

| | |
|--------------------|-------|
| DD KG | 58 |
| Detergent | 63 |
| DIN tube clamps | 8-9 |
| Double hose clamps | 43 |
| Drain plug | 68-72 |
| DSD KG N | 100 |
| DSD KG S | 101 |
| DSD KG V | 102 |

Index

E

| | |
|--------|----|
| ESK | 10 |
| ESK M | 19 |
| ESK W2 | 11 |
| ESK W5 | 12 |

F

| | |
|-----------------|----|
| Festkupplung | 89 |
| FK KG HR A-D MG | 87 |
| FK KG HR AL | 85 |
| FK KG HR B-D AL | 86 |
| FK KG HR MG | 88 |
| FK KG IR AL | 89 |
| FK KG IR A AL | 90 |
| FK KG IR A MG | 91 |
| FK KG IR B AL | 97 |
| FK KG IR B MG | 98 |
| FK KG IR C AL | 94 |
| FK KG IR C MG | 95 |
| FK KG IR D AL | 92 |
| FK KG IR D MG | 93 |
| FK KG IR MG | 96 |
| FLD R N | 59 |
| FLD R N W | 60 |
| FLD R T | 61 |
| Flow divider | 66 |

G

| | |
|--------------|-------|
| Gasket | 59-61 |
| Gripping jaw | 25-30 |

H

| | |
|----------------|-------|
| Hose clamps | 5-6 |
| Hose clamps | 10-20 |
| Hose clamps | 23-24 |
| Hose clamps | 44-45 |
| Hose clamp set | 7 |

K

| | |
|------|----|
| KPS | 99 |
| KSKL | 18 |

L

| | |
|------------|----|
| Lock Fluid | 62 |
|------------|----|

M

| | |
|----------------|-----|
| MENGENTEILER M | 66 |
| Mini clamps | 21 |
| MRS | 23 |
| MRSS | 24 |
| MST AL | 103 |
| MST KG AL | 104 |

Index

M

| | |
|--------|----|
| NRS 09 | 13 |
| NRS 12 | 14 |
| NRS 15 | 15 |
| NRS 20 | 16 |
| NRS 25 | 17 |

O

| | |
|---------------------|-------|
| O-Ring Set | 2 |
| O-ring set, BSP | 3 |
| OKD VC | 43 |
| One ear clamp | 31-38 |
| OR SET | 2 |
| OR SET Z | 3 |
| Oval two ear clamps | 42 |

P

| | |
|------------------------|---------|
| Pressure/ suction seal | 100-102 |
| PTFE sealing strip | 64 |

R

| | |
|----------|----|
| REINIGER | 63 |
|----------|----|

S

| | |
|--------|----|
| SBS 12 | 25 |
| SBS 15 | 26 |
| SBS 20 | 27 |

| | |
|-------------------------------|-----|
| SBS 220 | 29 |
| SBS 225 | 30 |
| SBS 25 | 28 |
| SCHELLEN-SET A | 8 |
| SCHELLEN-SET B | 9 |
| SCHELLEN SET M | 21 |
| SCHRAUBENDR | 22 |
| Screw driver | 22 |
| SD KG A-D S | 56 |
| SD KG A-D V | 57 |
| SD KG N | 53 |
| SD KG S | 54 |
| SD KG V | 55 |
| Sealing disc | 73 |
| Sealing for delivery | 58 |
| Set of clamps in plastic case | 46 |
| SK KG AL | 76 |
| SK KG A AL | 77 |
| SK KG A MG | 78 |
| SK KG B AL | 83 |
| SK KG B MG | 84 |
| SK KG C AL | 81 |
| SK KG C MG | 82 |
| SK KG D AL | 79 |
| SK KG D MG | 80 |
| STAHLBOX F | 65 |
| Steel tube | 103 |

Index

| | |
|------------------|-------|
| Steel tube | 104 |
| Suction coupling | 76-84 |
| Suction seal | 53-57 |

T

| | |
|-----------------|-------|
| TF BAND | 64 |
| Threaded nozzle | 67 |
| Tool box, steel | 65 |
| Two ear clamp | 39-41 |
| T M | 67 |

V

| | |
|----------|----|
| VB KG AL | 51 |
| VB KG MG | 52 |