

Product range 9 – Tube Clamps



Technical Information

HANSA-FLEX Tube Clamps

Tube clamps according to DIN 3015

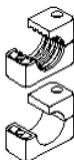
Types of clamp bodies

The clamp bodies are available in these materials ex store

- Polypropylene (dark green colour)
- Polyamide (black colour)
- Solid rubber (black colour)
- Aluminium

Upper and lower clamp halves are identical. The inside of the clamp is available with or without webs.

Webs on the inside of the clamps have a vibration and impact reducing effect and absorb force towards the direction of the tube axis. A spacing between both halves produces the bias of the tube.



For the support of hoses and cables, we recommend to use clamps with an even inside without bias. The spacing measure s_1 is not required. Thus, the block height h_1 is reduced.

Types of metal parts

As a regular feature of the light and double series clamps, screws, rail nuts and cover plates are zinc coated, welding plates phosphatized and support rails uncoated.

As a regular feature of the heavy series clamps, all steel parts are uncoated.

All steel parts of the different construction series are also available ex stock in stainless steel type W5 and in rust- and acid-resisting stainless steel 1,4571 (AISI 316 Ti).

Other surface treatments are available upon request.

UNC-threads are available upon request

Metric thread	corresponding UNC-thread
M 6	1/4 – 20 UNC
M 8	5/16 – 18 UNC
M 10	3/8 – 16 UNC
M 12	7/16 – 14 UNC
M 16	5/8 – 11 UNC
M 20	3/4 – 10 UNC
M 24	7/8 – 9 UNC
M 30	1 1/8 – 7 UNC

Registration

German Lloyd
Lloyd's Register of Shipping
Bureau Veritas
DET Norske Veritas
Registro Italiano Novale

Technical Information

HANSA-FLEX Tube Clamps

Mechanical Properties

	Polypropylene (PP)	Polyamide 6 (PA 6)	Aluminium	Rubber
Density	0,906 g/cm ³	1,12 – 1,15 g/cm ³	2,65 g/cm ³	0,98 g/cm ³
Flexural Deflection	36 N/mm ²	130 ... 200 N/mm ²	70 N/mm ²	—
Impact Resistance	no break	no break	—	—
Compressive Strength	90 N/mm ²	120 N/mm ²	HB 500...600 N/mm ²	shore
Modulus of Elasticity	1500 N/mm ²	3000 N/mm ²	70.0000 N/mm ²	–
Tensile Strength without leakage	25 – 35 N/mm ²	80 – 90 N/mm ²	180 N/mm ²	8,5 N/mm ²

Thermal Properties

Temp. Resistance	– 30 up to + 90°C	– 40 up to + 120°C	300°C	– 50 up to + 120°C
------------------	-------------------	--------------------	-------	--------------------

Chemical Properties

Weak Acids	limited resistant	limited resistant	—	resistant
Weak Alkalis	limited resistant	limited resistant	—	resistant
Alcohol	resistant	resistant	—	resistant
Petrol	limited resistant	resistant	—	limited resistant
Mineral Oils	limited resistant	resistant	—	resistant
Other Oils	resistant	resistant	—	resistant

Other materials on request.

The outlined particulars are approximate values and are only valid as references, which are not binding, also with regard to possible protection of third parties, and they do not exempt you from your own examination of suitability of the products delivered by us.

Therefore, these values can only be used in a limited sense for construction purposes.

The application of the products is carried out outside our control possibilities and, therefore, is exclusively subject to your own area of responsibility.

If, however, liability should be possible, it would be limited for all damages to the value of the goods supplied by us and in use by you.

It goes without saying, that we guarantee the perfect quality of our products according to our general sales and delivery conditions.

Technical Information

HANSA-FLEX Tube Clamps

Assembly Instruction

Assembly on metal welding plates

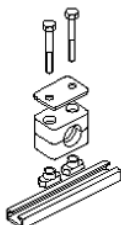


Place welding plates on a base appropriate for the load. Make sure that the clamps are properly aligned. Clamp lower clamp half onto welding plate, insert tube, place upper clamp half onto lower half and fasten with the screws. Attention must be paid to the bias (after completed assembly, clamp halves may not be in contact)!

Do not weld with fitted plastic clamp!

Extended welding plates may be screw-fastened to the base. Assembly on support rails

Assembly on support rails



Support rails are available in four different heights and come in pieces of 1 m or 2 m length, as required.

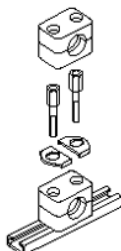
Weld on support rail or screw-fasten with fastening angle bracket.

Insert support rail nuts in rail and turn until stoppage. For heavy duty construction series, nuts are simply pushed in.

Clamp lower clamp half on support rail nuts, insert tube, place upper clamp half onto lower half and fasten with the screws. Before fastening the screws, the clamp may still be positioned.

Attention must be paid to the bias (after completed assembly, the clamp halves may not be in contact)!

Construction assembly



HANSA-FLEX Clamps allow the assembly of multiple clamps of the same construction size and of different tube diameters one above the other.

The construction assembly is carried out with special fixing screws that are secured against twisting by applying a locking plate.

Clamp lower clamp half on welding plate or support rail respectively, insert tube, place upper clamp half on lower half and fasten with fixing screws.

The fixing screw juts out from the upper clamp half. The application of a locking plate securely fastens the fixing screw and prevents twisting.

Clamp on second clamp half on to the fixing screws etc.

Technical Information

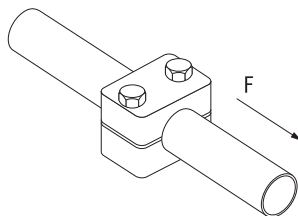
HANSA-FLEX Tube Clamps

Screw Tightening Torque and axial Pipe Shearing Forces

The indicated screw tightening torque and axial pipe shearing forces refer to the assembly with cover plates and outside hexagon bolts according to DIN 931/933.

The axial pipe shearing force (according to DIN 3015, part 10) is an average value, determined by three tests made with a steel pipe according to DIN 2448 of St 37, for which static friction is presupposed (temperature during tests: 23°C).

When loading the HANSA-FLEX clamp with the indicated test force (F) in axial pipe direction, the pipe does not slide in the clamp.



Light series (DIN 3015, part 1)

Size	Fixing screw	Polypropylene		Polyamide		Aluminium	
		Screw tightening torque (Nm)	Pipe shearing force F (kN)	Screw tightening torque (Nm)	Pipe shearing force F (kN)	Screw tightening torque (Nm)	Pipe shearing force F (kN)
0	M6	8	0,6	10	0,6	—	—
1	M6	8	1,1	10	0,7	12	4,2
2	M6	8	1,2	10	0,8	12	4,3
3	M6	8	1,4	10	1,6	12	4,8
4	M6	8	1,5	10	1,7	12	5,0
5	M6	8	1,9	10	2,0	12	7,3
6	M6	8	2,0	10	2,5	12	8,9

Technical Information

HANSA-FLEX Tube Clamps

Heavy series (DIN 3015, part 2)

		Polypropylene		Polyamide		Aluminium	
Size	Fixing screw	Screw tightening torque (Mn)	Pipe shearing force F (kN)	Screw tightening torque (Mn)	Pipe shearing force F (kN)	Screw tightening torque (Mn)	Pipe shearing force F (kN)
1	M10	12	1,6	20	4,2	30	12,1
2	M10	12	2,9	20	4,5	30	15,1
3	M10	15	3,3	25	5,1	35	15,5
4	M12	30	8,2	40	9,3	55	29,4
5	M16	45	11,0	55	15,8	120	34,8
6	M20	80	14,0	150	21,0	220	50,0
7	M24	110	28,0	200	32,0	250	70,6
8	M30	180	40,0	350	48,0	500	84,5

Double series (DIN 3015, part 3)

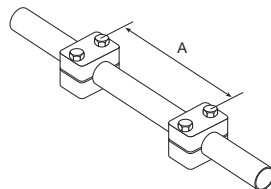
		Polypropylene		Polyamide	
Size	Fixing screw	Screw tightening torque (Mn)	Pipe shearing force F (kN)	Screw tightening torque (Mn)	Pipe shearing force F (kN)
1	M6	5	0,9	5	0,9
2	M8	12	2,1	12	2,2
3	M8	12	1,9	12	2,0
4	M8	12	2,7	12	2,9
5	M8	8	1,7	8	2,5

Technical Information

HANSA-FLEX Tube Clamps

Recommended Clamp Pitch

The clamp pitches assigned to the respective outside pipe diameters are standard values for static load.



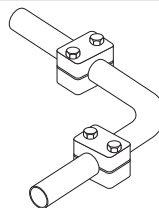
Outside pipe diameter (mm)

Clamp pitch A (mm)

6,0 – 12,7	1,0
12,7 – 22,0	1,2
22,0 – 32,0	1,5
32,0 – 38,0	2,0
38,0 – 57,0	2,7
57,0 – 75,0	3,0
75,0 – 76,1	3,5
76,1 – 88,9	3,7
88,9 – 102,0	4,0
102,0 – 114,0	4,5
114,0 – 168,0	5,0
168,0 – 219,0	6,0

Pipe Bend Assembly

Pipe bends must be fixed with HANSA-FLEX pipe clamps immediately in front of and behind the bend.



Used Materials

Rubber only available for light series and double clamps, inside smooths and heavy series grooved design.

Aluminium only available for light series size 1 to 6 and heavy series size 1 to 8

Smooth interior surface in heavy series only size 4

Aluminium clamps only available in a grooved design

Inside smooth light series only size 1 to 6

Tube Clamps

Light Construction Series



SRS-0100...

Complete Clamps

2 halves with short welding plate,
screws and washers typ U

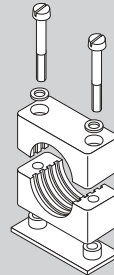
Material: Polypropylen

Light serie

Article category 9201



Clamp size 0



<i>Designation</i>	<i>Series</i>	<i>Clamp size</i>	<i>Ø</i>	<i>Inch NB</i>	<i>O.D.</i>
SRS 0108	L	0*	8		5/16
SRS 0110	L	0*	10	G 1/8	
SRS 0112	L	0*	12		
SRS 106 A	L	1	6		
SRS 108 A	L	1	8		5/16
SRS 109,5 A	L	1	9,5		3/8
SRS 110 A	L	1	10	G 1/8	
SRS 110,2 A	L	1	10,2		
SRS 112 A	L	1	12		
SRS 0213,5	L	2	13,5	G 1/4	
SRS 0214	L	2	14		
SRS 0215	L	2	15		
SRS 0216	L	2	16		5/8
SRS 0217,2	L	2	17,2	G 3/8	
SRS 0218	L	2	18		
SRS 0320	L	3	20		
SRS 0321,3	L	3	21,3	G 1/2	
SRS 0322	L	3	22		
SRS 0323	L	3	23		
SRS 0325	L	3	25		1
*) only 1 screw					

SRS-0100...

Complete Clamps

2 halves with short welding plate,
screws and washers typ U

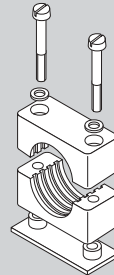
Material: Polypropylen

Light serie

Article category 9201



Clamp size 1-6



<i>Designation</i>	<i>Series</i>	<i>Clamp size</i>	<i>Ø</i>	<i>Inch NB</i>	<i>O.D.</i>
SRS 0426,9	L	4	26,9	G 3/4	
SRS 0428	L	4	28		
SRS 0430	L	4	30		
SRS 0532	L	5	32		1"1/4
SRS 0533,7	L	5	33,7	G 1	
SRS 0535	L	5	35		
SRS 0538	L	5	38		1"1/2
SRS 0540	L	5	40		
SRS 0542	L	5	42	G 1"1/4	
SRS 0542,4	L	5	42,4		
SRS 0644,5	L	6	44,5		1"3/4
SRS 0645	L	6	45		
SRS 0648	L	6	48	G 1"1/2	
SRS 0648,3	L	6	48,3		
SRS 0650	L	6	50		
SRS 0652	L	6	52		
SRS 0655	L	6	55		
SRS 0657	L	6	57		2"1/4

SRS-0100...DP

Complete Clamps

2 halves with short welding plate, screws and washers typ U

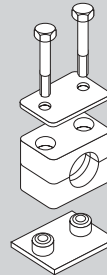
Material: Polypropylen

Light serie

Article category 9200



Clamp size 0



Designation	Series	Clamp size	Ø	Inch NB	O.D.
-------------	--------	------------	---	---------	------

SRS 0106 DP	L	0	6		
SRS 0108 DP	L	0	8		5/16
SRS 0110 DP	L	0	10	G 1/8	
SRS 0112 DP	L	0	12		
SRS 106 A-DP	L	1	6		
SRS 108 A-DP	L	1	8		5/16
SRS 110 A-DP	L	1	10	G 1/8	
SRS 110,2 A-DP	L	1	10,2		
SRS 112 A-DP	L	1	12		
SRS 0213 DP	L	2	12,7		1/2
SRS 0213,5 DP	L	2	13,5	G 1/4	
SRS 0214 DP	L	2	14		
SRS 0215 DP	L	2	15		
SRS 0216 DP	L	2	16		5/8
SRS 0217,2 DP	L	2	17,2	G 3/8	
SRS 0218 DP	L	2	18		
SRS 0320 DP	L	3	20		
SRS 0321,3 DP	L	3	21,3	G 1/2	
SRS 0322 DP	L	3	22		
SRS 0323 DP	L	3	23		
SRS 0325 DP	L	3	25		1

*) only 1 screw

SRS-0100...DP

Complete Clamps

2 halves with short welding plate,
screws and washers typ U

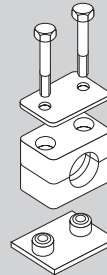
Material: Polypropylen

Light serie

Article category 9200



Clamp size1-6



<i>Designation</i>	<i>Series</i>	<i>Clamp size</i>	<i>Ø</i>	<i>Inch NB</i>	<i>O.D.</i>
--------------------	---------------	-------------------	----------	----------------	-------------

SRS 0426,9 DP	L	4	26,9	G 3/4	
SRS 0428 DP	L	4	28		
SRS 0430 DP	L	4	30		
SRS 0532 DP	L	5	32		1"1/4
SRS 0533,7 DP	L	5	33,7	G 1	
SRS 0535 DP	L	5	35		
SRS 0538 DP	L	5	38		1"1/2
SRS 0540 DP	L	5	40		
SRS 0542 DP	L	5	42	G 1"1/4	
SRS 0542,4 DP					
SRS 0644,5 DP	L	6	44,5		1"3/4
SRS 0645 DP	L	6	45		
SRS 0648 DP	L	6	48	G 1"1/2	
SRS 0648,3 DP	L	6	48,3		
SRS 0650 DP	L	6	50		
SRS 0652 DP	L	6	52		
SRS 0655 DP	L	6	55		
SRS 0657 DP	L	6	57		2"1/4

SRS-PP

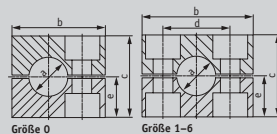
2 Clamp Halves

DIN 3015 Part 1

Material: Polypropylen

Light serie

Article category 9229



Designation	Series	Clamp size	Ø	Inch NB	O.D.	b	c	d	e
SRS 0106 PP	L	0	6			28	27	-	13,5
SRS 0108 PP	L	0	8		5/16	28	27	-	13,5
SRS 0109,5 PP	L	0	9,5		3/8	28	27	-	13,5
SRS 0110 PP	L	0	10	G 1/8		28	27	-	13,5
SRS 0112 PP	L	0	12			28	27	-	13,5
SRS 106 A PP	L	1	6			34	27	20	13,5
SRS 108 A PP	L	1	8		5/16	34	27	20	13,5
SRS 109,5 A PP	L	1	9,5		3/8	34	27	20	13,5
SRS 110 A PP	L	1	10	G 1/8		34	27	20	13,5
SRS 110,2 A PP	L	1	10,2			34	27	20	13,5
SRS 112 A PP	L	1	12			34	27	20	13,5
SRS 0213 PP	L	2	12,7		1/2	40	33	26	16,5
SRS 0213,5 PP	L	2	13,5	G 1/4		40	33	26	16,5
SRS 0214 PP	L	2	14			40	33	26	16,5
SRS 0215 PP	L	2	15			40	33	26	16,5
SRS 0216 PP	L	2	16		5/8	40	33	26	16,5
SRS 0217,2 PP	L	2	17,2	G 3/8		40	33	26	16,5
SRS 0218 PP	L	2	18			40	33	26	16,5
SRS 0320 PP	L	3	20			48	35	33	17,5
SRS 0321,3 PP	L	3	21,3	G 1/2		48	35	33	17,5
SRS 0322 PP	L	3	22			48	35	33	17,5
SRS 0323 PP	L	3	23			48	35	33	17,5
SRS 0325 PP	L	3	25		1	48	35	33	17,5

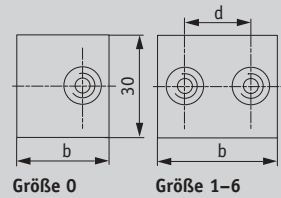
SRS-SP

Welding Plates, short

DIN 3015 Teil 1

Light serie

Article category 9213



<i>Designation</i>	<i>Clamp size</i>	<i>d</i>	<i>b</i>
SRS SP 1	0	-	30
SRS SP 1 A	1	20	36
SRS SP 2	2	26	42
SRS SP 3	3	33	50
SRS SP 4	4	40	59
SRS SP 5	5	52	72
SRS SP 6	6	66	88

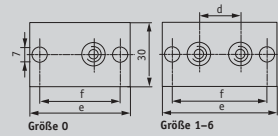
SRS-SP L

Weld / Screw Plates, long

DIN 3015 Teil 1

Light serie

Article category 9214



<i>Designation</i>	<i>Series</i>	<i>Clamp size</i>	<i>d</i>	<i>e</i>	<i>f</i>
SRS SP L 1	L	0	-	58	44
SRS SP L 1 A	L	1	20	64	50
SRS SP L 2	L	2	26	70	56
SRS SP L 3	L	3	33	78	64
SRS SP L 4	L	4	40	87	73
SRS SP L 5	L	5	52	100	86
SRS SP L 6	L	6	66	116	100

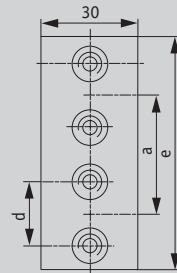
SRS-D SP

Twin Welding Plates

DIN 3015 Part 1

Light Serie

Article category 9215



<i>Designation</i>	<i>Series</i>	<i>Clamp size</i>	<i>d</i>	<i>a</i>	<i>e</i>
SRS D SP 1	L	0	-	30	61
SRS D SP 1 A	L	1	20	35	69
SRS D SP 2	L	2	26	43	86
SRS D SP 3	L	3	33	52	104
SRS D SP 4	L	4	40	60	117
SRS D SP 5	L	5	52	75	145
SRS D SP 6	L	6	66	90	176

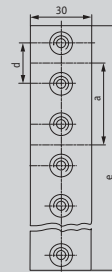
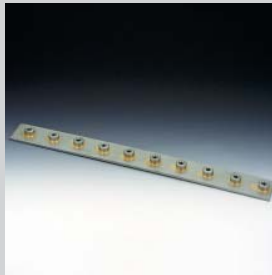
SRS-SP R

Multiple Welding Plates

DIN 3015 Teil 1

Light serie

Article category 9216



<i>Designation</i>	<i>Series</i>	<i>Clamp size</i>	<i>d</i>	<i>a</i>	<i>e</i>
--------------------	---------------	-------------------	----------	----------	----------

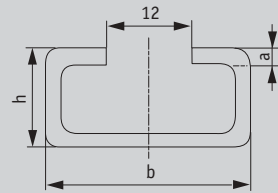
SRS SP R 1	L	0	-	30	298
SRS SP R 1 A	L	1	20	35	349
SRS SP R 2	L	2	26	43	427
SRS SP R 3	L	3	33	52	516
SRS SP R 4	L	4	40	60	297
SRS SP R 5	L	5	52	75	370
SRS SP R 6	L	6	66	90	446

SRS-TS

Mounting Rails

DIN 3015 Part 3

Article category 9210

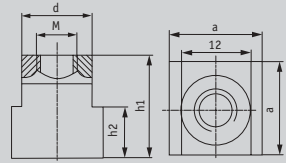


<i>Designation</i>	<i>Series</i>	<i>Clamp size</i>	<i>a</i>	<i>b</i>	<i>h</i>	<i>length</i>
SRS TS 11-2	L	1-6	2	28	11	2 meters
SRS TS 14-2	L/D	1-6	2	28	14	2 meters
SRS TS 14-3	L	1-6	2	28	14	3 meters
SRS TS 30-2	L	1-6	2	28	30	2 meters
SRS TS 40-1	S	1-4	5	40	22	1 meters
SRS TS 40-2	S	1-4	5	40	22	2 meters

SRS-SM

Rail Nuts

Article category 9211



<i>Designation</i>	<i>Series</i>	<i>Clamp size</i>	<i>d</i>	<i>a</i>	<i>h1</i>	<i>h2</i>	<i>M</i>
SRS SM	D	1	12	20	22	5	M 6
SRS SM 30-50	S	1-3	18	25	20	7	M 10
SRS SM 60	S	4	20	25	23	8,5	M 12
SRS SM D	D	2-5	14	20	22	11	M 8

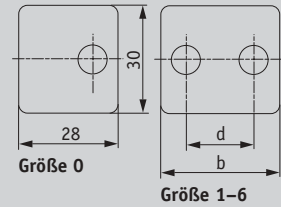
SRS-DP

Cover Plates

DIN 3015 Part 1

Light serie

Article category 9208



<i>Designation</i>	<i>Series</i>	<i>Clamp size</i>	<i>B</i>	<i>D</i>
SRS DP 1	L	0	-	-
SRS DP 1 A	L	1	34	20
SRS DP 2	L	2	40	26
SRS DP 3	L	3	48	33
SRS DP 4	L	4	57	40
SRS DP 5	L	5	70	52
SRS DP 6	L	6	86	66

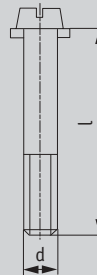
SRS-LI

Bolts, Slot Head

DIN 3015 Teil 1

Light serie

Article category 9206



<i>Designation</i>	<i>Series</i>	<i>Clamp size</i>	<i>d x l</i>
SRS LI 1	L	0-1	M 6x20
SRS LI 2	L	2	M 6x25
SRS LI 3	L	3	M 6x30
SRS LI 4	L	4	M 6x35
SRS LI 5	L	5	M 6x50
SRS LI 6	L	6	M 6x60

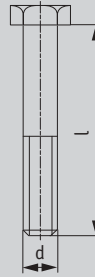
SRS-AS

Bolts, Hexagon Head

DIN 3015 Part 1

Light serie

Article category 9203



<i>Designation</i>	<i>Series</i>	<i>Clamp size</i>	<i>d x l</i>
SRS AS 1	L	0-1	M 6x30
SRS AS 2	L	2	M 6x35
SRS AS 3	L	3	M 6x40
SRS AS 4	L	4	M 6x45
SRS AS 5	L	5	M 6x60
SRS AS 6	L	6	M 6x70

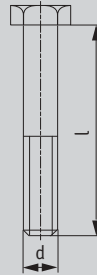
SRS-AS DP

Bolts, Hexagon Head

DIN 3015 Part 1

Light Serie

Article category 9204



<i>Designation</i>	<i>Series</i>	<i>Clamp size</i>	<i>d x l</i>
SRS AS DP 1	L	0-1	M 6x30
SRS AS DP 2	L	2	M 6x35
SRS AS DP 3	L	3	M 6x40
SRS AS DP 4	L	4	M 6x45
SRS AS DP 5	L	5	M 6x60
SRS AS DP 6	L	6	M 6x70

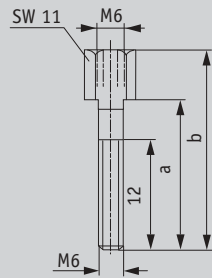
SRS-AF

Bolts, stacking

DIN 3015 Part 1

Light serie

Article category 9207



Designation	Series	Clamp size	a	b
-------------	--------	------------	---	---

SRS AF 1	L	0-1	20	34
SRS AF 2	L	2	25	39
SRS AF 3	L	3	30	44
SRS AF 4	L	4	35	49
SRS AF 5	L	5	50	64
SRS AF 6	L	6	60	74

The use of stacking bolts necessitates the deployment of locking plates during the construction assembly.

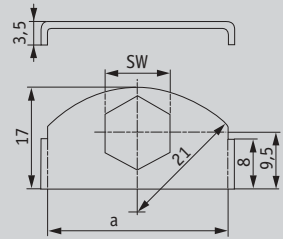
SRS-SIL

Locking Plates

DIN 3015 Teil 1

Light serie

Article category 9212



Designation	Series	Clamp size	a	SW
-------------	--------	------------	---	----

SRS SIL	L	0-6	30	11
---------	---	-----	----	----

The use of stacking bolts necessitates the deployment of locking plates during the construction assembly.

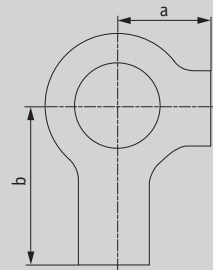
SRS-SIS

Locking Washers

DIN 3015 Teil 1

Light serie

Article category 9212



Designation	Series	Clamp size	a	b
-------------	--------	------------	---	---

SRS SIS	L	1-6	9	18
---------	---	-----	---	----

When assembling solid rubber clamps, covering plates, hexagon screws and locking washers must be used.

Tube Clamps

Heavy Construction Series



SRS-30-80

Complete Clamps

2 halves with welding plate,
screws

Material: Polypropylen

Heavy serie

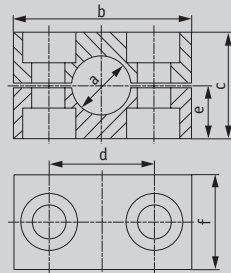
SRS-30-80PP

2 Clamp Halves

DIN 3015 Part 2

Heavy serie

Article category 9220



Designation	Series	Clamp size	Ø	Inch NB	O.D.	b	c	d	e	f
SRS 3006 PP	S	1	6			55	32	33	16	30
SRS 3008 PP	S	1	8		5/16	55	32	33	16	30
SRS 3010 PP	S	1	10	G 1/8		55	32	33	16	30
SRS 3012 PP	S	1	12			55	32	33	16	30
SRS 3012,7 PP	S	1	12,7		1/2	55	32	33	16	30
SRS 3013,5 PP	S	1	13,5	G 1/4		55	32	33	16	30
SRS 3014 PP	S	1	14			55	32	33	16	30
SRS 3015 PP	S	1	15			55	32	33	16	30
SRS 3016 PP	S	1	16		5/8	55	32	33	30	30
SRS 3018 PP	S	1	18			55	32	33	16	30
SRS 4020 PP	S	2	20			70	48	45	24	30
SRS 4021,3 PP	S	2	21,3	G 1/2		70	48	45	24	30
SRS 4022 PP	S	2	22			70	48	45	24	30
SRS 4023 PP	S	2	23			70	48	45	24	30
SRS 4025 PP	S	2	25		1	70	48	45	24	30
SRS 4026,9 PP	S	2	26,9	G 3/4		70	48	45	24	30
SRS 4028 PP	S	2	28			70	48	45	24	30
SRS 4030 PP	S	2	30			70	48	45	24	30
SRS 5030 PP	S	3	30			85	60	60	30	30
SRS 5032 PP	S	3	32		1"1/4	85	60	60	30	30
SRS 5033,7 PP	S	3	33,7	G 1		85	60	60	30	30
SRS 5035 PP	S	3	35			85	60	60	30	30
SRS 5038 PP	S	3	38		1"1/2	85	60	60	30	30
SRS 5040 PP	S	3	40			85	60	60	30	30
SRS 5042 PP	S	3	42	G 1"1/4		85	60	60	45	30

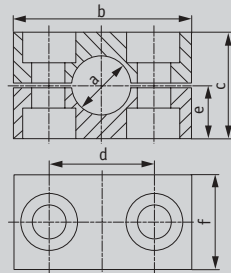
SRS-30-80PP

2 Clamp Halves

DIN 3015 Part 2

Heavy serie

Article category 9220



Designation	Series	Clamp size	Ø	Inch NB	O.D.	b	c	d	e	f
SRS 6038 PP	S	4	38		1"1/2	115	90	90	45	45
SRS 6040 PP	S	4	40			115	90	90	45	45
SRS 6042 PP	S	4	42	G 1"1/4		115	90	90	45	45
SRS 6045 PP	S	4	45			115	90	90	45	45
SRS 6048,3 PP	S	4	48,3	G 1"1/2		115	90	90	45	45
SRS 6050 PP	S	4	50			115	90	90	45	45
SRS 6052 PP	S	4	52			115	90	90	45	45
SRS 6055 PP	S	4	55			115	90	90	45	45
SRS 6060,3 PP	S	4	60,3	G 2		115	90	90	45	45
SRS 6063 PP	S	4	63		2"1/2	115	90	90	45	45
SRS 6065 PP	S	4	65			115	90	90	45	45
SRS 6070 PP	S	4	70			115	90	90	45	45
SRS 7070 PP	S	5	70			152	120	122	60	60
SRS 7075 PP	S	5	75			152	120	122	85	60
SRS 7076,1 PP	S	5	76,1	G 2"1/2	3	152	120	122	85	60
SRS 7080 PP	S	5	80			152	120	122	60	60
SRS 7088,9 PP	S	5	88,9	G 3	3"1/2	152	120	122	60	60
SRS 7090 PP	S	5	90			152	120	122	60	60
SRS 8090 PP	S	6	90			205	170	168	85	80
SRS 8100 PP	S	6	100			205	170	168	85	80
SRS 8101,6 PP	S	6	101,6	G 3"1/2	4	205	170	168	85	80
SRS 8108 PP	S	6	108		4"1/4	205	170	168	85	80
SRS 8114,3 PP	S	6	114,3	G 4	4"1/2	205	170	168	85	80

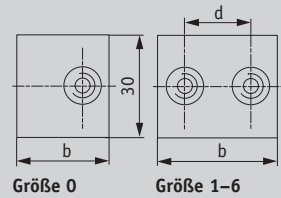
SRS-SP 30-80

Welding Plates

DIN 3015 Teil 2

Heavy serie

Article category 9221



<i>Designation</i>	<i>Series</i>	<i>Clamp size</i>	<i>d</i>	<i>f</i>	<i>g</i>	<i>i</i>	<i>m</i>
SRS SP 30	S	1	33	30	73	8	M 10
SRS SP 40	S	2	45	30	85	8	M 10
SRS SP 50	S	3	60	30	100	8	M 10
SRS SP 60	S	4	90	45	140	10	M 12
SRS SP 70	S	5	122	60	180	10	M 16
SRS SP 80	S	6	168	80	225	15	M 20

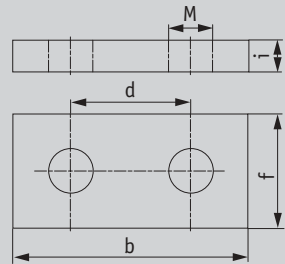
SRS-DP 30-80

Cover Plates

DIN 3015 Part 2

Heavy serie

Article category 9222



<i>Designation</i>	<i>Series</i>	<i>Clamp size</i>	<i>b</i>	<i>d</i>	<i>f</i>	<i>i</i>	<i>m</i>
SRS DP 30	S	1	55	33	30	8	11
SRS DP 40	S	2	70	45	30	8	11
SRS DP 50	S	3	85	60	30	8	11
SRS DP 60	S	4	115	90	45	10	14
SRS DP 70	S	5	152	122	60	10	18
SRS DP 80	S	6	205	168	80	15	22

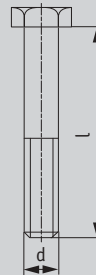
SRS-AS 30-80

Bolts, Hexagon Head

DIN 3015 Part 2

Heavy serie

Article category 9223



<i>Designation</i>	<i>Series</i>	<i>Clamp size</i>	<i>d x l</i>
SRS AS 30	S	1	M 10x45
SRS AS 40	S	2	M 10x60
SRS AS 50	S	3	M 10x70
SRS AS 60	S	4	M 12x100
SRS AS 70	S	5	M 16x130
SRS AS 80	S	6	M 20x190

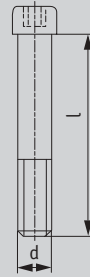
SRS-IS 30-80

Bolts, Socked Head

DIN 3015 Part 2

Heavy serie

Article category 9224



<i>Designation</i>	<i>Series</i>	<i>Clamp size</i>	<i>d x l</i>
SRS IS 30	S	1	M 10x45
SRS IS 40	S	2	M 10x60
SRS IS 50	S	3	M 10x70
SRS IS 60	S	4	M 12x100
SRS IS 70	S	5	M 16x130
SRS IS 80	S	6	M 20x190

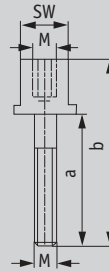
SRS-AF 30-80

Bolts, stacking

DIN 3015 Part 2

Heavy serie

Article category 9225



<i>Designation</i>	<i>Series</i>	<i>Clamp size</i>	<i>a</i>	<i>b</i>	<i>m</i>	<i>SW</i>
SRS AF 30	S	1	25	51	M 10	15
SRS AF 40	S	2	40	66	M 10	15
SRS AF 50	S	3	50	76	M 10	15
SRS AF 60	S	4	85	112	M 12	17
SRS AF 70	S	5	110	146	M 16	21
SRS AF 80	S	6	155	206	M 20	27

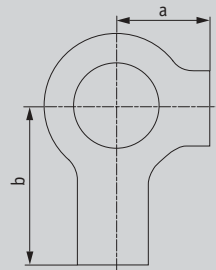
SRS-SIS

Locking Washers

DIN 3015 Teil 1

Heavy serie

Article category 9212



<i>Designation</i>	<i>Series</i>	<i>Clamp size</i>	<i>a</i>	<i>b</i>
SRS SIS 30	S	1	13	22
SRS SIS 40	S	2	13	22
SRS SIS 50	S	3	13	22
SRS SIS 60	S	4	15	28
SRS SIS 70	S	5	18	32
SRS SIS 80	S	6	21	36

When assembling solid rubber clamps, covering plates, hexagon screws and locking washers must be used.

Tube Clamps Double Series



SRS-D

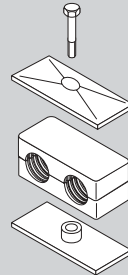
Twin Tubes Complete Clamps

2 clamps halves with welding plate, screws with hexagon head

Material: Polypropylen

Light serie

Article category 9231



<i>Designation</i>	<i>Series</i>	<i>Clamp size</i>	<i>Ø</i>	<i>Inch NB</i>	<i>O.D.</i>
SRS 106 D	D/L	1	6		
SRS 108 D	D/L	1	8		5/16
SRS 110 D	D/L	1	10	G 1/8	
SRS 112 D	D/L	1	12		
SRS 214 D	D/L	2	14		
SRS 215 D	D/L	2	15		
SRS 216 D	D/L	2	16		5/8
SRS 218 D	D/L	2	18		
SRS 320 D	D/L	3	20		
SRS 322 D	D/L	3	22		
SRS 325 D	D/L	3	25		1
SRS 428 D	D/L	4	28		
SRS 430 D	D/L	4	30		
SRS 533,7 D	D/L	5	33,7	G 1	
SRS 535 D	D/L	5	35		
SRS 538 D	D/L	5	38		1"1/2
SRS 542 D	D/L	5	42	G 1"1/4	

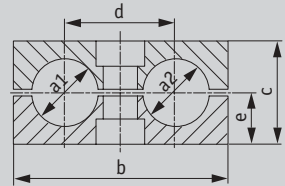
SRS-D PP

2 Clamp Halves

DIN 3015 Part 3

Material: Polypropylen

Article category 9232



Designation	Series	Clamp size	\varnothing a1/a2	Inch NB	O.D.	b	c	d	e
SRS 106 D PP	D/L	1	6			36	27	20	13,5
SRS 108 D PP	D/L	1	8		5/16	36	27	20	13,5
SRS 110 D PP	D/L	1	10	G 1/8		36	27	20	13,5
SRS 112 D PP	D/L	1	12			36	27	20	13,5
SRS 214 D PP	D/L	2	14			53	26	29	13
SRS 215 D PP	D/L	2	15			53	26	29	13
SRS 216 D PP	D/L	2	16		5/8	53	26	29	13
SRS 218 D PP	D/L	2	18			53	26	29	13
SRS 319 D PP	D/L	3	19		3/4	67	37	36	18,5
SRS 320 D PP	D/L	3	20			67	37	36	18,5
SRS 322 D PP	D/L	3	22			67	37	36	18,5
SRS 325 D PP	D/L	3	25		1	67	37	36	18,5
SRS 428 D PP	D/L	4	28			82	42	45	21
SRS 430 D PP	D/L	4	30			82	42	45	21
SRS 533,7 D PP	D/L	5	33,7	G 1		106	54	56	27
SRS 535 D PP	D/L	5	35			106	54	56	27
SRS 535/30 D PP	D/L	5	35/30			106	54	56	27
SRS 538 D PP	D/L	5	38		1"1/2	106	54	56	27
SRS 542 D PP	D/L	5	42	G 1"1/4		106	54	56	27

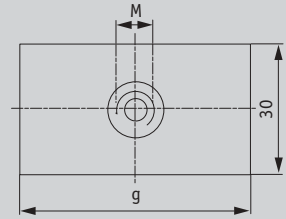
SRS-SP-D

Welding Plate

DIN 3015 Teil 3

Heavy serie

Article category 9237



<i>Designation</i>	<i>Clamp size</i>	<i>g</i>	<i>m</i>
--------------------	-------------------	----------	----------

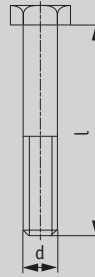
SRS SP 1 D	1	37	M 6
SRS SP 2 D	2	55	M 8
SRS SP 3 D	3	70	M 8
SRS SP 4 D	4	85	M 8
SRS SP 5 D	5	110	M 8

SRS-AS D

Bolts, Hexagon Head

DIN 3015 Part 3

Article category 9233



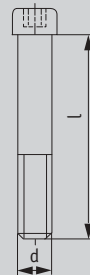
<i>Designation</i>	<i>Series</i>	<i>Clamp size</i>	<i>d x l</i>
SRS AS 1 D	D/L	1	M 6x35
SRS AS 2 D	D/L	2	M 8x35
SRS AS 3 D	D/L	3	M 8x45
SRS AS 4 D	D/L	4	M 8x50
SRS AS 5 D	D/L	5	M 8x60

SRS-IS D

Bolts, Socked Head

DIN 3015 Part 3

Article category 9234



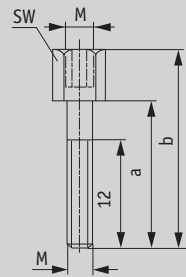
<i>Designation</i>	<i>Series</i>	<i>Clamp size</i>	<i>d x l</i>
SRS IS 1 D	D/L	1	M 6x35
SRS IS 2 D	D/L	2	M 8x35
SRS IS 3 D	D/L	3	M 8x45
SRS IS 4 D	D/L	4	M 8x50
SRS IS 5 D	D/L	5	M 8x60

SRS-AF D

Bolts, stacking

DIN 3015 Part 3

Article category 9235



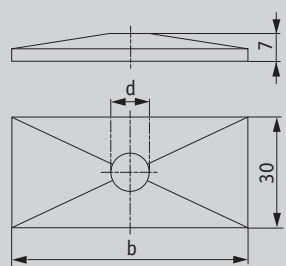
<i>Designation</i>	<i>Series</i>	<i>Clamp size</i>	<i>a</i>	<i>b</i>	<i>M</i>	<i>SW</i>
SRS AF 1 D	D/L	1	20	34	M 6	11
SRS AF 2 D	D/L	2	20	33	M 8	12
SRS AF 3 D	D/L	3	29	44	M 8	12
SRS AF 4 D	D/L	4	34	49	M 8	12
SRS AF 5 D	D/L	5	47	62	M 8	12

SRS-DP D

Cover Plates

Light serie

Article category 9236



<i>Designation</i>	<i>Series</i>	<i>Clamp size</i>	<i>b</i>	<i>d</i>
--------------------	---------------	-------------------	----------	----------

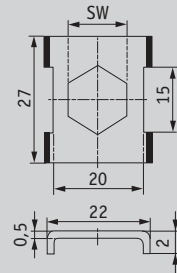
SRS DP 1 D	D/L	1	34	6,6
SRS DP 2 D	D/L	2	51	8,6
SRS DP 3 D	D/L	3	64	8,6
SRS DP 4 D	D/L	4	78	8,6
SRS DP 5 D	D/L	5	102	8,6

SRS-SI

Locking Plates

DIN 3015 Teil 3

Article category 9212



Designation

Series

Clamp size

SW

SRS SI 1D

D

1

11

SRS SI 2D

D

2-5

12

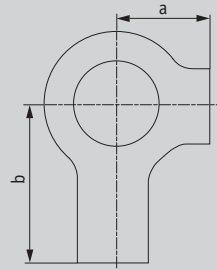
The use of stacking bolts necessitates the deployment of locking plates during the construction assembly.

SRS-SIS

Locking Washers

DIN 3015 Teil 1

Article category 9212



Designation	Series	Clamp size	a	b
-------------	--------	------------	---	---

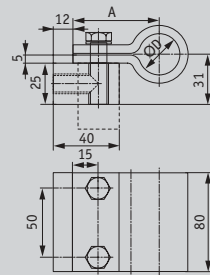
SRS-SIS	D	1	9	18
SRS-SIS 2D	D	2-5	11	20

When assembling solid rubber clamps, covering plates, hexagon screws and locking washers must be used.

HSRS

Hydraulic Steel-clamps

Article category 9299



Designation

$\emptyset D$

A

HSRS25	25	52,5
HSRS30	30	55
HSRS35	35	57,5
HSRS38	38	59
HSRS42	42	61

HSRS hydraulik steel-clamps are mainly used in the field of building machinery.

The support-block is welded to the machine body or another component either in upend or flat position. The tube-clamp is screwed on.

The robust construction of the clamp has an impact- and vibrationabsorbing effect. The small dimension/height of the clamp allows hydraulic cables to be fitted later on – e.g. for installing additional equipment to building machinery.

SRS-E

Sleeves for Tube Clamps

Material: Polypropylen

Article category 9209



Designation

Series

SRS EP

L

SRS ES

S

Index

2

2 Clamp Halves	13
2 Clamp Halves	29
2 Clamp Halves	30
2 Clamp Halves	39

B

Bolts, Hexagon Head	22
Bolts, Hexagon Head	23
Bolts, Hexagon Head	33
Bolts, Hexagon Head	41
Bolts, Slot Head	21
Bolts, Socked Head	34
Bolts, Socked Head	42
Bolts, stacking	24
Bolts, stacking	35
Bolts, stacking	43

C

Complete Clamps	9
Complete Clamps	10
Complete Clamps	11
Complete Clamps	12
Complete Clamps	28
Cover Plates	20
Cover Plates	32
Cover Plates	44

H

HSRS	47
Hydraulic Steel-clamps	47

L

Light Construction Series	8
Locking Plates	25
Locking Plates	45
Locking Washers	26
Locking Washers	36
Locking Washers	46

M

Mounting Rails	18
Multiple Welding Plates	17

R

Rail Nuts	19
-----------	----

S

Sleeves for Tube Clamps	48
SRS-0100...	9
SRS-0100...	10
SRS-0100...DP	11
SRS-0100...DP	12
SRS-30-80	28
SRS-30-80PP	29
SRS-30-80PP	30

Index

SRS-AF	24
SRS-AF 30-80	35
SRS-AF D	43
SRS-AS	22
SRS-AS 30-80	33
SRS-AS D	41
SRS-AS DP	23
SRS-D	38
SRS-DP	20
SRS-DP 30-80	32
SRS-DP D	44
SRS-D PP	39
SRS-D SP	16
SRS-E	48
SRS-IS 30-80	34
SRS-IS D	42
SRS-LI	21
SRS-PP	13
SRS-SI	45
SRS-SIL	25
SRS-SIS	26
SRS-SIS	36
SRS-SIS	46
SRS-SM	19
SRS-SP	14
SRS-SP-D	40
SRS-SP 30-80	31

SRS-SP L	15
SRS-SP R	17
SRS-TS	18

T

Tube Clamps	8
Twin Tubes Complete Clamps	38
Twin Welding Plates	16

W

Weld/ Screw Plates, long	15
Welding Plate	40
Welding Plates	31
Welding Plates, short	14